



**RAPE  
IN  
ARKANSAS  
1992**

Arkansas Crime Information Center

143379

*Arkansas Crime Information Center*

**David Eberdt**  
Director

**Charles Pruitt**  
Deputy Director

**Larry Cockrell**  
Special Services Manager

**Gary Vanderslice**  
System Support Manager

*ACIC Supervisory Board*

**Judge David Hale, Chairman**  
Municipal Judges Association

**Jack Lassiter, Vice Chairman**  
Arkansas Bar Association

**Sheriff David Baker**  
Arkansas Sheriff's Association

**Paul Bosson**  
Prosecuting Attorneys Association

**Cary Gaines**  
Association of Arkansas Counties

**Jack Gillean**  
Attorney General's Office

**J.D. Gingerich**  
Arkansas Supreme Court

**Colonel Tommy Goodwin**  
Arkansas State Police

**David Guntharp**  
Department of Correction

**Representative James Jordan**  
General Assembly

**Captain Mike Mashburn**  
Municipal Police Association

**Chief Paul Rivaldo**  
Chiefs of Police Association

**Arch Wylie**  
Citizen-at-large

*Uniform Crime Reporting Staff*

**Lynn Bulloch**  
UCR Supervisor

**Anita Jacobsen**  
Quality Control

**Julie Collier**  
Composition

**Berea Stennis**  
DP Section, Data Input

## Introduction

*Rape In Arkansas* is an annual publication. Data in this report comes from the state Uniform Crime Reporting program and a special supplement that allows collection of additional information on each rape and attempted rape. It should be understood that only those incidents that are reported to law enforcement are contained in this publication.

143379

### U.S. Department of Justice National Institute of Justice

This document has been reproduced exactly as received from the person or organization originating it. Points of view or opinions stated in this document are those of the authors and do not necessarily represent the official position or policies of the National Institute of Justice.

Permission to reproduce this copyrighted material has been granted by  
Arkansas Crime Information Center

to the National Criminal Justice Reference Service (NCJRS).

Further reproduction outside of the NCJRS system requires permission of the copyright owner.

A Special Services Report

**RAPE IN ARKANSAS  
1992**

May, 1993

**Arkansas Crime Information Center**  
One Capitol Mall  
Little Rock, AR 72201  
501/682-2222

## **Acknowledgement**

We thank all the law enforcement agencies in the state who participated in the Arkansas Uniform Crime Reporting Program during 1992. Without their support and cooperation, this publication and the resulting overview of crime would not be possible.

## **Dedication**

We are aware that numerous rapes occur that are not reported to law enforcement. This report is dedicated to rape victims who had the courage to report these offenses, and to all law enforcement officers endeavoring to uphold the laws and serve the people of Arkansas.

## Definitions of Rape

The definition of rape in Arkansas, according to Arkansas Code 5-14-103 and as amended by Act 935 is:

A person commits rape if he engages in sexual intercourse or deviate sexual activity with another person:

- A. (1). *by forcible compulsion; or*  
(2). *who is incapable of consent because he is physically helpless; or*  
(3). *who is less than fourteen (14) years of age. It is an affirmative defense to prosecution under this Section that the actor was not more than two (2) years older than the victim; or*  
(4). *who is not his spouse, less than sixteen (16) years of age and incapable of consent because of mental defect or mental incapacity.*
- B. *Rape is a class Y felony.*

**The definition of forcible rape in the Uniform Crime Reporting (UCR) Program is:**

*Forcible rape is the carnal knowledge of a female forcibly and against her will. Assaults to commit forcible rape are also included; however, statutory rape (without force) is not counted in this category.*

There is a wide disparity between these two definitions. **This report utilizes the Uniform Crime Reporting definition of rape.** The report includes all data collected, with the cooperation of law enforcement agencies from their offense reports, as reported to the Arkansas Crime Information Center in the UCR Program.

Throughout this report, except where noted, rape and attempted rape are combined for statistical purposes.

## Rape in Arkansas 1992

There were 988 rapes and attempted rapes in Arkansas reported through the Uniform Crime Reporting Program. Of these, 859 were rapes and 129 were attempted rapes reported by law enforcement agencies. This is a 6% decrease from 1991, but is still 28% higher than five years ago and 60% higher than in 1982.

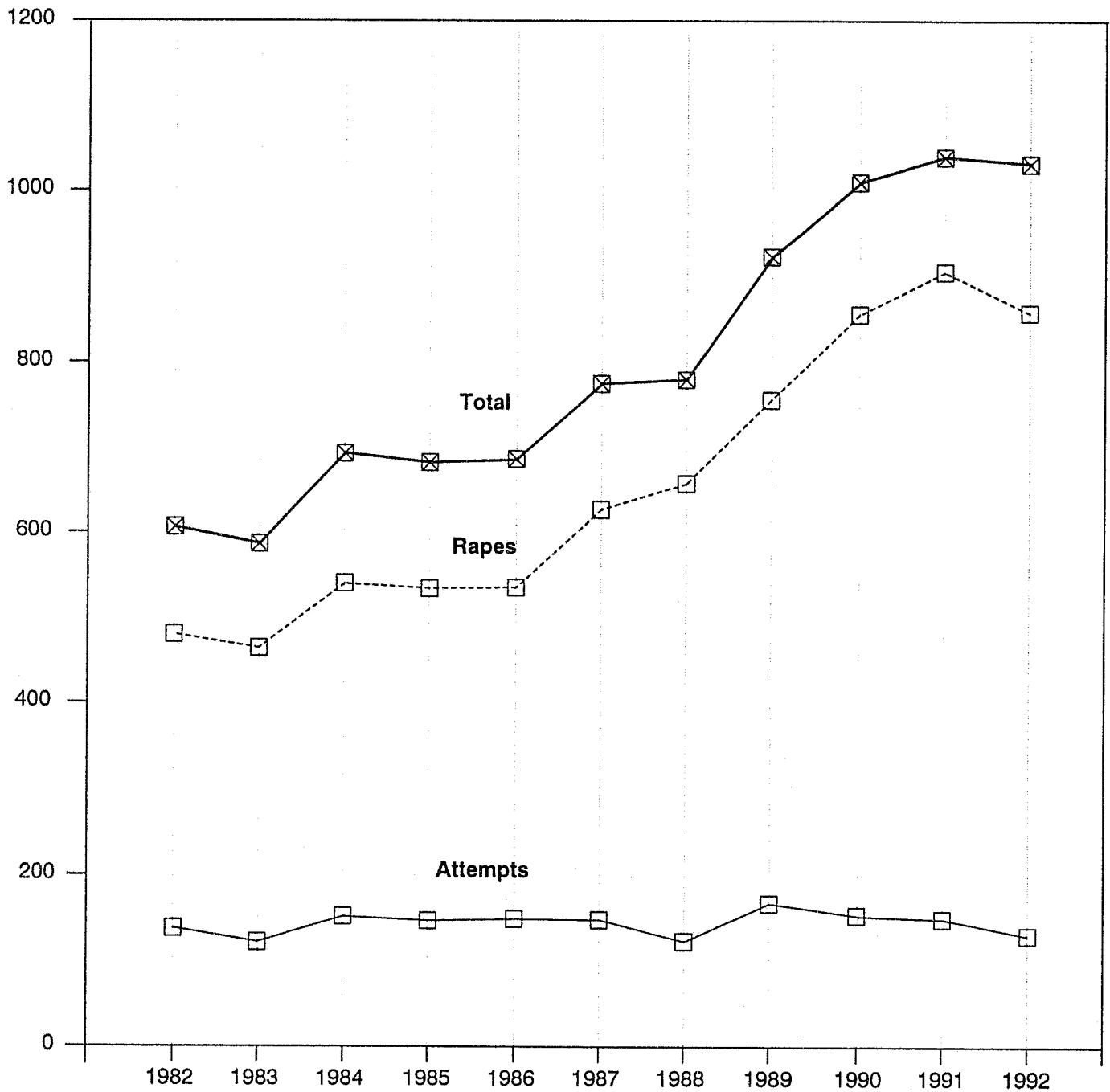
### Rape and Attempted Rape

Rape/Attempted Rape	Number	Percent Distribution
Rape	859	86.9
Attempted Rape	129	13.1
<b>Total</b>	<b>988</b>	<b>100</b>

### Trend

Year	Number of Offenses	Percent Change (Over Previous Year)	Rate Per 100,000	Percent Cleared
1987	774	+13.2	32.8	69.3
1988	779	+ 0.6	32.4	62.9
1989	922	+18.4	38.5	61.2
1990	1,009	+ 9.4	43.1	57.2
1991	1,052	+ 4.3	44.8	56.5
<b>1992</b>	<b>988</b>	<b>- 6.0</b>	<b>41.9</b>	<b>58.9</b>

## Comparison of Rapes and Attempted Rapes 1982 through 1992



## Rape by Time of Day

When time of day was known, almost half of all rapes (45%) occurred during the 6 hour period, between 10:00 p.m. and 4:00 a.m. The most common two hour period was from midnight to 2:00 a.m.

Only 8% of the rapes occurred during the 6 hour period between 4:00 a.m. and noon.

Time of Day	Number	Percent Distribution
A.M. 12:01 - 2	144	14.6
2:01 - 4	103	10.4
4:01 - 6	58	5.9
6:01 - 8	29	2.9
8:01 - 10	26	2.6
10:01 - Noon	10	1.0
P.M. 12:01 - 2	55	5.6
2:01 - 4	56	5.7
4:01 - 6	62	6.3
6:01 - 8	62	6.3
8:01 - 10	91	9.2
10:01 -Midnight	119	12.0
Unknown	173	17.5

## Rape by Day of Week

Approximately one-third of the rapes were committed on Friday or Saturday.

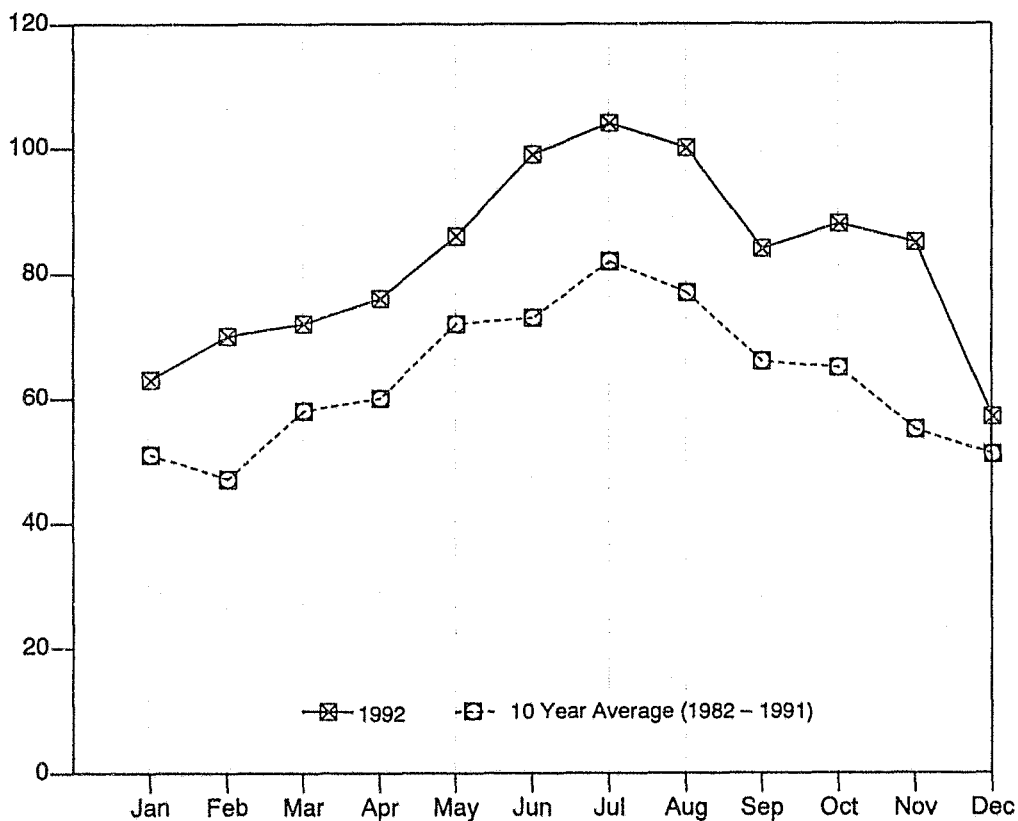
Day of Rape	Number	Percent Distribution
Sunday	120	12.1
Monday	110	11.1
Tuesday	106	10.7
Wednesday	125	12.7
Thursday	115	11.6
Friday	138	14.0
Saturday	189	19.1
Unknown	85	8.6



## Rapes by Month

(1992 compared to a ten year average – 1982 to 1991)

In 1992, more rapes occurred in July than any other month. From 1982 through 1991, the ten year average was highest for July and August.



Month	Number	Percent Distribution
January	63	6.4
February	70	7.1
March	72	7.3
April	76	7.7
May	86	8.7
June	99	10.0
July	104	10.5
August	100	10.1
September	84	8.5
October	88	8.9
November	85	8.6
December	51	5.2
Unknown	11	1.0
<b>Total</b>	<b>988</b>	<b>100</b>

## Victims of Rape

There were more white victims of rape than black victims in 1992 and in 1991, while there were almost the same number of black and white victims in 1990.

The age distribution for victims has remained very constant over the past five years. Forty-four percent were younger than eighteen years old and two of every three victims were younger than 25. The youngest victim was less than a year old and the oldest 92.

More rapes occurred in victims of age fourteen through seventeen than in any other age range. This has been true since 1987 which was the first year this was tabulated.

Victim Characteristics	Number	Percent Distribution
Race		
White	558	56.5
Black	429	43.4
Unknown	1	0.1
Age		
5 & Under	45	4.5
6 - 9	41	4.1
10 - 13	148	15.1
14 - 17	200	20.4
18 - 20	108	10.9
21 - 24	128	12.9
25 - 29	131	13.3
30 - 34	87	8.8
35 - 39	38	3.8
40 - 49	34	3.4
50 - 59	10	1.0
60 & Over	16	1.6
Unknown	2	.2
<b>Total</b>	<b>988</b>	<b>100</b>

## Weapons Used to Exert Force Upon Victim

Weapon Used	Number	Percent Distribution
Firearm	87	8.8
Knife/Sharp Instrument	85	8.6
Club/Blunt Instrument	27	2.7
Verbal threats, fists, etc.	788	79.8
Unknown	1	0.1

## Victim-Offender Race Relationship

The first race listed is the race of the *victim*, and the second race is that of the *offender(s)*. For example: *white/black* means that the victim was white and the offender was black (1 or more). For offenses in which race is known, 84% of the rapes were between members of the same race.

Victim/Offender(s) Race	Number	Percent Distribution
White/White	406	41.1
Black/Black	405	41.0
Total Intra-racial Rapes (same race)	811	82.1
White/Black	129	13.1
Black/White	17	1.7
White/Other	1	0.1
Other/Black	1	0.1
White/White & Black*	6	0.6
Total Interracial Rapes (different races)	154	15.6
White/Unknown	16	1.6
Black/Unknown	7	.7
Total Unknown Rapes	23	2.3
<b>Total Rapes</b>	<b>988</b>	<b>100</b>

*\*Rapes involving victims and offenders of different races are counted as interracial.*

## Relationship of Offender to Victim

Two thirds of all rapes were committed by persons known to the victim.

Relationship	Number	Percent Distribution
Known to victim	523	52.9
Unknown to victim	308	31.2
Family member	156	15.8
Unknown (data not available)	1	0.1

## Rapes Involving Family Members

Where the offender was known to the victim 23% of the rapes involved family members. Where the offender was a family member, 38 victims (24%) were age 10 or younger, and 116 victims (74%) were less than 15 years of age.

Relationship	Number	Percent Distribution
Husband	10	6.4
Ex-Husband	10	6.4
Father	38	24.4
Stepfather	35	22.4
Grandfather	5	3.2
Stepgrandfather	1	.6
Brother	7	4.5
Half Brother	2	1.3
Stepbrother	7	4.5
Uncle	15	9.6
Cousin	20	12.8
Brother-in-law	4	2.6
Nephew	2	1.3
<b>Total</b>	<b>156</b>	<b>100</b>

## Location of Actual Rapes and Attempted Rapes

In 1992, 43% of all rapes occurred in the victim's residence.

Location of Rape	Number	Percent Distribution
Victim's residence	427	43.2
Suspect's residence	135	13.7
Other residences	107	10.8
Automobiles	67	6.8
Public outdoor areas (streets, parks, etc.)	143	14.5
Fields, vacant lots, wooded areas, etc.	27	2.7
Motels/Hotels	36	3.7
Place of Employment	8	0.8
School/playground	12	1.2
All other locations	17	1.7
Unknown	9	0.9

## Rape Reporting Time Lapse

Where time lapse was known 44% of the rapes were reported to law enforcement agencies within four hours of the commission of the offense. In 1991, 41% were reported within four hours.

In 10% of the offenses, the time lapse was unknown or could not be used because more than one rape occurred over a time period of a month or more.

Hours Reporting Time	Number	Percent Distribution
Less than 1	213	21.6
1 - 4	178	18.0
4 + - 8	100	10.1
8 + - 12	45	4.6
12 + - 24	121	12.2
More than 24	231	23.4
Unknown	100	10.1

## Number of Offenders Per Rape

There were two or more offenders in only 13% of the rapes or attempted rapes.

Offender(s) Per Offense	Number	Percent Distribution
One	858	86.8
Two	74	7.5
Three	33	3.3
Four	11	1.1
More than four	8	0.8
Unknown	4	0.4

## Rape Offenders (Suspects)

Where the age of the offender was known, over half (53%) were age 25 or younger. Only 8% of the offenders were over age 40.

Age of Offender	White	Black	Unknown	Total
15 and Under	25 (2.0%)	34 (2.8%)		59 (4.8%)
16 – 20	76 (6.3%)	157 (13.1%)		233 (19.4%)
21 – 25	94 (7.8%)	147 (12.2%)	1 (0.1%)	242 (20.1%)
26 – 30	67 (5.5%)	103 (8.6%)		170 (14.1%)
31 – 35	69 (5.6%)	73 (6.1%)		142 (11.7%)
36 – 40	52 (4.3%)	42 (3.5%)		94 (7.8%)
41 – 45	17 (1.5%)	18 (1.5%)		35 (3.0%)
46 – 50	8 (0.7%)	10 (0.8%)		18 (1.5%)
51 – 60	15 (1.3%)	4 (0.3%)		19 (1.6%)
61 and over	5 (0.5%)	0 (0%)		5 (0.5%)
Unknown	46 (3.8%)	117 (9.7%)	24 (2.0%)	187 (15.5%)
<b>Total</b>	<b>474 (39.3%)</b>	<b>705 (58.6%)</b>	<b>25 (2.1%)</b>	<b>1,204 (100%)</b>

## Medical Attention for Victims

Of the 859 victims of actual rape, 602 (70%) received medical attention.

Type of Rape	Medical Attention			Total
	Received Medical Attention	No Medical Attention	Unknown	
Actual	602 (60.9%)	140 (14.2%)	117 (11.8%)	859 (86.9%)
Attempt	18 (1.9%)	81 (8.2%)	30 (3.0%)	129 (13.1%)
<b>Total</b>	<b>620 (62.8%)</b>	<b>221 (22.4%)</b>	<b>147 (14.8%)</b>	<b>988 (100%)</b>

## Number of Rapes and Attempted Rapes \*(By Reporting Agency)

AGENCY	RAPES	ATTEMPTED	AGENCY	RAPES	ATTEMPTED
<b>ARKANSAS COUNTY</b>	<b>3</b>	<b>2</b>	<b>CRAWFORD COUNTY</b>	<b>4</b>	<b>0</b>
Stuttgart	3	2	Sheriff	3	0
			Van Buren	1	0
<b>ASHLEY COUNTY</b>	<b>3</b>	<b>0</b>	<b>CRITTENDEN COUNTY</b>	<b>31</b>	<b>2</b>
Sheriff	3	0	Sheriff	2	2
<b>BAXTER COUNTY</b>	<b>5</b>	<b>0</b>	Marion	1	0
Sheriff	5	0	West Memphis	28	0
<b>BENTON COUNTY</b>	<b>9</b>	<b>0</b>	<b>CROSS COUNTY</b>	<b>6</b>	<b>0</b>
Sheriff	5	0	Sheriff	6	0
Rogers	3	0	<b>DALLAS COUNTY</b>	<b>1</b>	<b>0</b>
Siloam Springs	1	0	Fordyce	1	0
<b>CALHOUN COUNTY</b>	<b>2</b>	<b>1</b>	<b>DESHA COUNTY</b>	<b>1</b>	<b>1</b>
Sheriff	2	1	Dumas	1	1
<b>CARROLL COUNTY</b>	<b>1</b>	<b>0</b>	<b>DREW COUNTY</b>	<b>1</b>	<b>0</b>
Berryville	1	0	Monticello	1	0
<b>CHICOT COUNTY</b>	<b>6</b>	<b>1</b>	<b>FAULKNER COUNTY</b>	<b>10</b>	<b>1</b>
Sheriff	5	0	Sheriff	1	0
Dermott	1	1	Conway	9	1
<b>CLARK COUNTY</b>	<b>2</b>	<b>1</b>	<b>FRANKLIN COUNTY</b>	<b>1</b>	<b>2</b>
Sheriff	2	0	Ozark	1	2
Arkadelphia	0	1	<b>FULTON COUNTY</b>	<b>2</b>	<b>0</b>
<b>CLEBURNE COUNTY</b>	<b>5</b>	<b>0</b>	Sheriff	2	0
Sheriff	2	0	<b>GARLAND COUNTY</b>	<b>26</b>	<b>2</b>
Heber Springs	3	0	Sheriff	1	0
<b>CLEVELAND COUNTY</b>	<b>4</b>	<b>1</b>	Hot Springs	25	2
Sheriff	4	1	<b>GRANT COUNTY</b>	<b>3</b>	<b>0</b>
<b>COLUMBIA COUNTY</b>	<b>11</b>	<b>2</b>	Sheriff	1	0
Sheriff	10	2	Sheridan	2	0
Magnolia	1	0	<b>GREENE COUNTY</b>	<b>10</b>	<b>0</b>
<b>CONWAY COUNTY</b>	<b>12</b>	<b>0</b>	Sheriff	2	0
Sheriff	8	0	Paragould	8	0
Morrilton	4	0	<b>HEMPSTEAD COUNTY</b>	<b>13</b>	<b>3</b>
<b>CRAIGHEAD COUNTY</b>	<b>23</b>	<b>1</b>	Sheriff	4	2
Sheriff	3	0	Hope	9	1
Jonesboro	20	1	<b>HOT SPRING COUNTY</b>	<b>6</b>	<b>0</b>
			Sheriff	2	0
			Malvern	4	0

\*Agencies reporting no rapes are not listed.

## Number of Rapes and Attempted Rapes

AGENCY	RAPES	ATTEMPTED	AGENCY	RAPES	ATTEMPTED
<b>HOWARD COUNTY</b>	<b>4</b>	<b>0</b>	<b>OUACHITA COUNTY</b>	<b>12</b>	<b>1</b>
Sheriff	4	0	Sheriff	1	1
			Camden	11	0
<b>INDEPENDENCE COUNTY</b>	<b>11</b>	<b>0</b>	<b>PERRY COUNTY</b>	<b>1</b>	<b>0</b>
Sheriff	11	0	Sheriff	1	0
<b>JACKSON COUNTY</b>	<b>4</b>	<b>0</b>	<b>PHILLIPS COUNTY</b>	<b>5</b>	<b>4</b>
Sheriff	2	0	Sheriff	1	0
Newport	2	0	Helena	4	4
<b>JEFFERSON COUNTY</b>	<b>69</b>	<b>11</b>	<b>POINSETT COUNTY</b>	<b>5</b>	<b>1</b>
Sheriff	12	1	Sheriff	2	0
Pine Bluff	57	10	Marked Tree	1	0
<b>JOHNSON COUNTY</b>	<b>1</b>	<b>0</b>	Trumann	2	1
Sheriff	1	0	<b>POLK COUNTY</b>	<b>3</b>	<b>0</b>
<b>LEE COUNTY</b>	<b>1</b>	<b>2</b>	Sheriff	3	0
Marianna	1	2	<b>POPE COUNTY</b>	<b>15</b>	<b>1</b>
<b>LITTLE RIVER COUNTY</b>	<b>1</b>	<b>0</b>	Sheriff	4	1
Ashdown	1	0	Russellville	11	0
<b>LONOKE COUNTY</b>	<b>5</b>	<b>0</b>	<b>PULASKI COUNTY</b>	<b>300</b>	<b>64</b>
Sheriff	1	0	Sheriff	29	14
Cabot	1	0	Jacksonville	22	1
Lonoke	3	0	Little Rock	189	33
<b>MADISON COUNTY</b>	<b>1</b>	<b>0</b>	Mauwelle	1	1
Sheriff	1	0	North Little Rock	58	15
<b>MARION COUNTY</b>	<b>2</b>	<b>0</b>	Sherwood	1	0
Sheriff	2	0	<b>ST. FRANCIS COUNTY</b>	<b>17</b>	<b>3</b>
<b>MILLER COUNTY</b>	<b>33</b>	<b>2</b>	Sheriff	6	1
Sheriff	12	0	Forrest City	11	2
Texarkana	21	2	<b>SALINE COUNTY</b>	<b>19</b>	<b>5</b>
<b>MISSISSIPPI COUNTY</b>	<b>41</b>	<b>3</b>	Sheriff	15	1
Sheriff	17	1	Benton	4	4
Blytheville	17	2	<b>SEBASTIAN COUNTY</b>	<b>58</b>	<b>4</b>
Osceola	7	0	Sheriff	5	0
<b>MONROE COUNTY</b>	<b>1</b>	<b>0</b>	Fort Smith	51	4
Brinkley	1	0	Greenwood	2	0
<b>MONTGOMERY COUNTY</b>	<b>4</b>	<b>0</b>	<b>SEVIER COUNTY</b>	<b>1</b>	<b>2</b>
Sheriff	4	0	DeQueen	1	2
			<b>SHARP COUNTY</b>	<b>3</b>	<b>0</b>
			Sheriff	3	0



## Number of Rapes and Attempted Rapes

AGENCY	RAPES	ATTEMPTED
<b>UNION COUNTY</b>	<b>6</b>	<b>3</b>
El Dorado	6	3
<b>VAN BUREN COUNTY</b>	<b>1</b>	<b>0</b>
Sheriff	1	0
<b>WASHINGTON COUNTY</b>	<b>25</b>	<b>2</b>
Sheriff	4	0
Fayetteville	14	0
Springdale	5	2
U of A Fayetteville	1	0
West Fork	1	0
<b>WHITE COUNTY</b>	<b>8</b>	<b>0</b>
Sheriff	7	0
Searcy	1	0
<b>YELL COUNTY</b>	<b>1</b>	<b>1</b>
Dardanelle	1	1
<b>STATE TOTAL</b>	<b>859</b>	<b>129</b>

ACIC Agent Staff Areas

