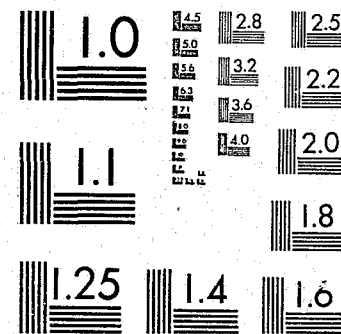


National Criminal Justice Reference Service

ncjrs

This microfiche was produced from documents received for inclusion in the NCJRS data base. Since NCJRS cannot exercise control over the physical condition of the documents submitted, the individual frame quality will vary. The resolution chart on this frame may be used to evaluate the document quality.



MICROCOPY RESOLUTION TEST CHART
NATIONAL BUREAU OF STANDARDS-1963-A

Microfilming procedures used to create this fiche comply with the standards set forth in 41CFR 101-11.504.

Points of view or opinions stated in this document are those of the author(s) and do not represent the official position or policies of the U. S. Department of Justice.

National Institute of Justice
United States Department of Justice
Washington, D. C. 20531

11/04/86

CRSENT
9-23-86

INTER-UNIVERSITY CONSORTIUM FOR
POLITICAL AND SOCIAL RESEARCH

I
C
P
S
R

STATE AND LOCAL PROSECUTION
AND CIVIL ATTORNEY SYSTEMS

(ICPSR 7674)

101971

Principal
Investigator

Law Enforcement
Assistance Administration

Second, ICPSR Printing 1986

U.S. Department of Justice
National Institute of Justice

101971

This document has been reproduced exactly as received from the person or organization originating it. Points of view or opinions stated in this document are those of the authors and do not necessarily represent the official position or policies of the National Institute of Justice.

Permission to reproduce this copyrighted material in microform only has been granted by
Inter-university Consortium for
Political and Social Research

to the National Criminal Justice Reference Service (NCJRS).

Further reproduction outside of the NCJRS system requires permission of the copyright owner.

STATE AND LOCAL PROSECUTION
AND CIVIL ATTORNEY SYSTEMS
(ICPSR 7674)

PRINCIPAL INVESTIGATOR
UNITED STATES DEPARTMENT OF JUSTICE,
BUREAU OF JUSTICE STATISTICS

INTER-UNIVERSITY CONSORTIUM FOR POLITICAL
AND SOCIAL RESEARCH
P.O. BOX 1248
ANN ARBOR, MICHIGAN 48106

ICPSR EDITION
SECOND PRINTING, 1986

ACKNOWLEDGMENT OF ASSISTANCE

ALL MANUSCRIPTS UTILIZING DATA MADE AVAILABLE THROUGH THE CONSORTIUM SHOULD ACKNOWLEDGE THAT FACT AS WELL AS IDENTIFY THE ORIGINAL COLLECTOR OF THE DATA. THE ICPSR COUNCIL URGES ALL USERS OF ICPSR FACILITIES TO FOLLOW SOME ADAPTATION OF THIS STATEMENT WITH THE PARENTHESES INDICATING ITEMS TO BE FILLED IN APPROPRIATELY OR DELETED BY THE INDIVIDUAL USER.

THE DATA (AND TABULATIONS) UTILIZED IN THIS (PUBLICATION) WERE MADE AVAILABLE (IN PART) BY THE INTER-UNIVERSITY CONSORTIUM FOR POLITICAL AND SOCIAL RESEARCH. THE DATA FOR STATE AND LOCAL PROSECUTION AND CIVIL ATTORNEY SYSTEMS WERE ORIGINALLY COLLECTED BY THE U. S. BUREAU OF THE CENSUS FOR THE BUREAU OF JUSTICE STATISTICS (BJS). NEITHER THE ORIGINAL COLLECTOR OF THE DATA NOR THE CONSORTIUM BEAR ANY RESPONSIBILITY FOR THE ANALYSES OR INTERPRETATIONS PRESENTED HERE.

IN ORDER TO PROVIDE FUNDING AGENCIES WITH ESSENTIAL INFORMATION ABOUT THE USE OF ARCHIVAL RESOURCES AND TO FACILITATE THE EXCHANGE OF INFORMATION ABOUT ICPSR PARTICIPANTS' RESEARCH ACTIVITIES, EACH USER OF THE ICPSR DATA FACILITIES IS EXPECTED TO SEND TWO COPIES OF EACH COMPLETED MANUSCRIPT OR THESIS ABSTRACT TO THE CONSORTIUM. PLEASE INDICATE IN THE COVER LETTER WHICH DATA WERE USED.

TABLE OF CONTENTS

	PAGE NO.
INTRODUCTION	
STUDY DESCRIPTION	i
DATA COLLECTION	ii
FILE STRUCTURE	iii
CODEBOOK INFORMATION	iv
ICPSR PROCESSING INFORMATION	vii
VARIABLE DESCRIPTION LIST	viii
CODEBOOK	1
APPENDIX A: RELIABILITY OF ESTIMATES	19
APPENDIX B: FREQUENCIES	21
APPENDIX C: QUESTIONNAIRE	93

STUDY DESCRIPTION

THIS SURVEY WAS CONDUCTED BY THE BUREAU OF THE CENSUS IN LATE 1976 FOR THE BUREAU OF JUSTICE STATISTICS (BJS) OF THE U. S. DEPARTMENT OF JUSTICE. THE PURPOSE OF THE STUDY WAS TO ESTABLISH A CURRENT NAME AND ADDRESS LISTING OF STATE AND LOCAL GOVERNMENT PROSECUTION AND CIVIL ATTORNEY AGENCIES AND TO OBTAIN INFORMATION ABOUT AGENCY FUNCTION, JURISDICTION, EMPLOYMENT, FUNDING, AND ATTORNEY COMPENSATION ARRANGEMENT.

THE SURVEY COVERS ALL STATE, COUNTY, AND MUNICIPAL GOVERNMENT AGENCIES ENGAGED IN PROSECUTION OR IN PROVIDING CIVIL LEGAL SERVICES TO THE GOVERNMENT. THE DATA FOR EACH AGENCY INCLUDE INFORMATION FOR ANY IDENTIFIABLE LOCAL POLICE PROSECUTORS. SPECIFICALLY EXCLUDED FROM THE STUDY WERE PRIVATE LAW FIRMS THAT PERFORM LEGAL SERVICES PERIODICALLY FOR A GOVERNMENT AND ARE COMPENSATED BY RETAINERS AND FEES.

ALL STATES HAVE A STATE-LEVEL AGENCY HEADED BY AN ATTORNEY GENERAL. INFORMATION OBTAINED FOR THESE AGENCIES INCLUDE DATA FROM THOSE DIVISIONS WITHIN THE AGENCY THAT ACTUALLY PROVIDE PROSECUTION OR LEGAL SERVICES, FROM THE PRIMARY ADMINISTRATIVE UNIT, AND FROM ANY INVESTIGATIVE BUREAU UNDER THE ADMINISTRATIVE CONTROL OF THE ATTORNEY GENERAL. DIVISIONS WITHIN THE AGENCY WHICH DID NOT PERFORM THOSE FUNCTIONS DESCRIBED ABOVE WERE EXCLUDED FROM THE SURVEY.

THESE VARIABLES ARE INCLUDED: AGENCY FUNCTIONS AND JURISDICTION, AGENCY FUNDING, NUMBER AND TYPES OF EMPLOYEES, COMPENSATION AND EMPLOYMENT RESTRICTIONS FOR ATTORNEYS, AGENCY'S GEOGRAPHICAL JURISDICTION, NUMBER OF BRANCH OFFICES, AND NUMBER OF BRANCH OFFICE EMPLOYEES.

THE DATA REFLECT THE ORGANIZATION OF PROSECUTION AND LEGAL SERVICE AGENCIES AS OF SEPTEMBER 1, 1976. THE REFERENCE DATE FOR AGENCY EMPLOYMENT IS SEPTEMBER 1, 1976.

DATA COLLECTION

THIS SURVEY WAS CONDUCTED BY MAIL WITH AN INITIAL MAILOUT OF 10,310 QUESTIONNAIRES IN OCTOBER, 1976. THERE WAS A SECOND AND THIRD MAILED REQUEST SENT TO THOSE AGENCIES WHICH DID NOT RESPOND TO THE INITIAL REQUEST. MAIL AND TELEPHONE FOLLOWUP PROCEDURES WERE USED TO CLARIFY INADEQUATE AND INCONSISTENT SURVEY RETURNS. CENSUS BUREAU DOCUMENTS WERE USED AS SECONDARY SOURCES TO CLARIFY OR CONFIRM CERTAIN DATA.

AN OVERALL RESPONSE RATE OF 68 PER CENT WAS ACHIEVED. THESE INCLUDED RETURNS FROM ALL STATE ATTORNEYS GENERAL, ALL MAJOR COUNTY AND MUNICIPAL PROSECUTOR AND LEGAL SERVICE AGENCIES, AND A SIGNIFICANT NUMBER OF SMALLER COUNTY AND MUNICIPAL OFFICES. THESE RESPONSES AND DATA FROM THE SECONDARY REFERENCE SOURCES WERE USED TO ASSIGN VALUES FOR SELECTED DATA ITEMS FOR THE SMALLER NON-RESPONDING AGENCIES. THE LEGAL JURISDICTION OF SUCH NON-RESPONDING AGENCIES WAS ASSIGNED ON THE BASIS OF STATE STATUTES. IN SOME CASES THE STATE STATUTES ALSO PROVIDED THE TYPE OF GOVERNMENT RESPONSIBLE FOR FINANCING THE AGENCY. WHEN FUNDING INFORMATION WAS NOT AVAILABLE FROM THE STATUTES, FUNDING SOURCES WERE ASSIGNED ON THE BASIS OF THE LEVEL OF GOVERNMENT ADMINISTERING THE AGENCY. THE NUMBER OF EMPLOYEES WAS ESTIMATED ON THE BASIS OF RETURNS FROM SIMILAR AGENCIES WITHIN THE SAME STATE. HOWEVER, INFORMATION ON METHOD OF ATTORNEY COMPENSATION, RESTRICTIONS ON ATTORNEY PRIVATE PRACTICE, AND COMPILATION OF WORKLOAD STATISTICS WAS NOT ESTIMATED FOR NON-RESPONDING AGENCIES BECAUSE THESE ITEMS VARY CONSIDERABLY FROM AGENCY TO AGENCY.

THE MAILING LIST FOR THE SURVEY WAS DERIVED FROM THE NATIONAL DIRECTORY OF CRIMINAL JUSTICE AGENCIES, WHICH IS MAINTAINED BY THE BUREAU OF THE CENSUS FOR THE BUREAU OF JUSTICE STATICS (BJS). THE LIST WAS REVISED TO REFLECT INFORMATION CONTAINED IN THE 1976 STATE COMPREHENSIVE LAW ENFORCEMENT PLANS PREPARED BY EACH STATE FOR BJS. STATE-LEVEL AGENCY LISTS WERE RECEIVED AND UPDATED BY VARIOUS ATTORNEY GENERALS AND STATE PROSECUTION COORDINATORS COUNTY AND MUNICIPAL LISTS WERE UPDATED FROM RESEARCH OF STATE COUNTY, AND MUNICIPAL DIRECTORIES.

FILE STRUCTURE

THE DATA ARE AVAILABLE FROM ICPSR IN TWO FORMATS: A CARD IMAGE FILE AND AN OSIRIS DATASET. THE CARD IMAGE FILE CONTAINS 3 DECKS PER AGENCY IN A FORMAT BASED ON 80 COLUMN PUNCHED CARDS. THE DATA ARE SORTED BY AGENCY WITH ALL DECKS FOR EACH CASE TOGETHER IN ASCENDING ORDER. THE OSIRIS DATA FILE IS CONSTRUCTED WITH A SINGLE LOGICAL RECORD OF 141 BYTES FOR EACH AGENCY.

THE OSIRIS DATA FILE CONSISTS OF THREE FILES STORED ON MAGNETIC TAPE: A MACHINE READABLE USER'S GUIDE WHICH DOCUMENTS THE DATA FOR THE HUMAN USER, AN OSIRIS TYPE 1 DICTIONARY FILE WHICH DESCRIBES THE DATA TO A COMPUTER PROGRAM, AND A DATA FILE.

A UNIT IN THIS DATASET IS A STATE, COUNTY, OR MUNICIPAL PROSECUTION OR LEGAL SERVICE AGENCY. THE UNITS ARE SORTED ACCORDING TO LEVEL OF GOVERNMENT.

THE OSIRIS DATA FILE CAN BE ACCESSED DIRECTLY BY SOFTWARE PACKAGES WHICH DO NOT USE THE OSIRIS DICTIONARY BY SPECIFYING THE TAPE LOCATIONS OF THE DESIRED VARIABLES. THESE TAPE LOCATIONS ARE GIVEN IN THE OSIRIS CODEBOOK.

CODEBOOK INFORMATION

THE EXAMPLE BELOW IS A REPRODUCTION OF INFORMATION APPEARING IN A MACHINE READABLE CODEBOOK FOR A TYPICAL VARIABLE. THE NUMBERS IN BRACKETS DO NOT APPEAR IN THE CODEBOOK BUT ARE REFERENCES TO THE DESCRIPTIONS WHICH FOLLOW THIS EXAMPLE.

.....
 [1] VAR 0196 [2] 1-FA'S DGRE INST N POLT [3] MD=0 OR GE 8
 REF 0196 [4] LOC 258 WIDTH 1 [5] DK 4 COL 48
 [6]MULT RESPS X [7]IMP DEC=2

[8] Q.48. NOW WE WOULD LIKE TO HEAR ABOUT YOUR FATHER'S (GUARDIAN'S) INTEREST IN POLITICAL ACTIVITIES DURING THE PERIOD WHEN YOU WERE GROWING UP. CAN YOU REMEMBER IF YOUR FATHER (GUARDIAN) WAS VERY INTERESTED IN POLITICS, FAIRLY INTERESTED, OR WAS HE NOT MUCH INTERESTED?

[9]SEE Q.84 THROUGH Q.93 FOR RELATED QUESTIONS.

[10]SEE NOTE(S) 5

[11] [12] [13]
 391 1. VERY INTERESTED
 713 2. FAIRLY INTERESTED
 465 3. NOT VERY INTERESTED
 169 8. DOES NOT KNOW
 1 9. REFUSES
 12 0. NOT ASCERTAINED

.....
 1. INDICATES THE VARIABLE AND REFERENCE NUMBERS. A VARIABLE AND REFERENCE NUMBER ARE ASSIGNED TO EACH ITEM IN THE STUDY. IN THE PRESENT CODEBOOK WHICH DOCUMENTS THE ARCHIVED DATASET THESE NUMBERS ARE IDENTICAL. SHOULD THE DATA BE SUBSETTED OR REARRANGED BY AN OSIRIS PROGRAM (E.G., MMP TO INTERSPERSE DATA FROM ANOTHER SOURCE OR TCOT TO PRODUCE AN ANALYSIS DECK), THE VARIABLE NUMBERS WOULD CHANGE TO REFLECT THE ORDER OF THE NEW DATASET WHILE THE REFERENCE NUMBERS WOULD REMAIN UNCHANGED TO REFLECT THE VARIABLE NUMBER IN THE CODEBOOK DESCRIBING THE ARCHIVED DATASET.

2. INDICATES THE ABBREVIATED (24 CHARACTERS MAXIMUM) VARIABLE NAME USED WITHIN THE OSIRIS SYSTEM TO IDENTIFY THE VARIABLE FOR THE USER. AN EXPANDED VERSION OF THESE NAMES CAN BE FOUND IN THE VARIABLE DESCRIPTION LIST.
3. INDICATES THE DESIGNATION OF MISSING DATA. IN THIS EXAMPLE CODE VALUES EQUAL TO ZERO AND THOSE GREATER THAN OR EQUAL TO EIGHT ARE MISSING DATA (MD=0 OR GE 8). ALTERNATIVE STATEMENTS FOR OTHER VARIABLES ARE "MD=0", "MD GE 8", OR "NO MISSING DATA CODES". SOME ANALYSIS SOFTWARE PACKAGES (INCLUDING THE ICPSR-SUPPORTED PACKAGE) REQUIRE THAT CERTAIN TYPES OF DATA WHICH THE USER DESIRES TO BE EXCLUDED FROM ANALYSIS BE DESIGNATED AS "MISSING DATA" E.G., INAPPROPRIATE, UNASCERTAINED, UNASCERTAINABLE, OR AMBIGUOUS DATA CATEGORIES. ALTHOUGH THESE CATEGORIES ARE DEFINED AS MISSING DATA CATEGORIES, THIS DOES NOT MEAN THAT A USER SHOULD NOT OR CANNOT USE THESE CODES IN A SUBSTANTIVE ROLE IF SO DESIRED.
4. INDICATES THE STARTING LOCATION AND WIDTH OF THIS VARIABLE WHEN THE DATA ARE STORED ON A MAGNETIC TAPE IN THE OSIRIS FORMAT. FOR MULTIPLE RESPONSE VARIABLES THE LOCATION AND WIDTH REFER TO THE FIRST RESPONSE CODED.
5. INDICATES THE LOCATION BY DECK AND COLUMN OF THIS VARIABLE WHEN THE DATA ARE ON CARDS OR IN CARD IMAGE FORM (EITHER 80 OR 84 COLUMN FORMAT). FOR MULTIPLE RESPONSE VARIABLES THE LOCATIONS REFER TO THE ENTIRE VARIABLE FIELD.
6. A MULTIPLE RESPONSE VARIABLE IS DENOTED BY THE MESSAGE "MULT RESPS X", WHERE X IS THE NUMBER OF RESPONSES.
7. A VARIABLE CONTAINING DATA WITH IMPLIED DECIMALS IS DENOTED BY THE MESSAGE, "IMP DEC=2", WHERE 2 IS THE NUMBER OF DECIMAL PLACES IMPLIED (NOT PUNCHED) IN THE VARIABLE.
8. INDICATES THE FULL TEXT (QUESTION) SUPPLIED BY THE INVESTIGATOR TO DESCRIBE THE VARIABLE.
9. INDICATES AN ADDITIONAL COMMENT OR EXPLANATION APPENDED TO THE VARIABLE DESCRIPTION.

10. A VARIABLE WHICH HAS A FOOTNOTE ASSOCIATED WITH IT IS DENOTED BY THE MESSAGE, "SEE NOTE(S) 5", WHERE 5 IS THE NUMBER OF THE FOOTNOTE REFERENCED.
11. INDICATES THE FREQUENCY OF OCCURRENCE OF EACH CODE VALUE. FREQUENCIES FOR MULTIPLE RESPONSE VARIABLES ARE CUMULATIVE.
12. INDICATES THE CODE VALUES OCCURRING IN THE DATA FOR THIS VARIABLE.
13. INDICATES THE TEXTUAL DEFINITIONS OF THE CODES.

ICPSR PROCESSING INFORMATION

THE STUDY WAS PROCESSED ACCORDING TO STANDARD ICPSR PROCESSING PROCEDURES. THE DATA WERE CHECKED FOR ILLEGAL OR INCONSISTENT CODES WHICH, WHEN FOUND, WERE CORRECTED BY REFERRING TO RELATED VARIABLES. THROUGHOUT THE TEXT ADDITIONAL COMMENTS, BRACKETED IN "<" AND ">" SIGNS, WERE INSERTED BY THE STUDY PROCESSOR IN THE COURSE OF PREPARING THE CODEBOOK TO PROVIDE FURTHER EXPLANATORY INFORMATION.

VARIABLE DESCRIPTION LIST

AGENCY IDENTIFICATION INFORMATION

1. STATE CODE
2. LEVEL OF GOVERNMENT
3. COUNTY CODE
4. CITY CODE
5. CHECK DIGIT
6. PRIMARY AGENCY NUMBER
7. UNIQUE NUMBER
8. TYPE OF AGENCY CODE
9. EMPLOYMENT CODE
10. JURISDICTION

AGENCY PAYROLL FUNDING

11. PERCENTAGE ANNUAL FUNDING PROVIDED BY FEDERAL GOVERNMENT
12. PERCENTAGE ANNUAL FUNDING PROVIDED BY STATE GOVERNMENT
13. PERCENTAGE ANNUAL FUNDING PROVIDED BY COUNTY GOVERNMENT
14. PERCENTAGE ANNUAL FUNDING PROVIDED BY MUNICIPAL (CITY OR TOWN) GOVERNMENT
15. PERCENTAGE ANNUAL FUNDING PROVIDED BY TOWNSHIP GOVERNMENT
16. PERCENTAGE ANNUAL FUNDING PROVIDED BY OTHER GOVERNMENTS

AGENCY FUNDING OTHER THAN PAYROLL

17. PERCENTAGE ANNUAL FUNDING PROVIDED BY FEDERAL GOVERNMENT
18. PERCENTAGE ANNUAL FUNDING PROVIDED BY STATE GOVERNMENT
19. PERCENTAGE ANNUAL FUNDING PROVIDED BY COUNTY GOVERNMENT
20. PERCENTAGE ANNUAL FUNDING PROVIDED BY MUNICIPAL (CITY OR TOWN) GOVERNMENT
21. PERCENTAGE ANNUAL FUNDING PROVIDED BY TOWNSHIP GOVERNMENT
22. PERCENTAGE ANNUAL FUNDING PROVIDED BY OTHER GOVERNMENTS

AGENCY FULL-TIME EMPLOYMENT

- 23. TOTAL NUMBER OF FULL-TIME EMPLOYEES
- 24. NUMBER OF ATTORNEYS
- 25. NUMBER OF INVESTIGATORS
- 26. NUMBER OF LEGAL SERVICE EMPLOYEES
- 27. NUMBER OF ADMINISTRATIVE AND SUPERVISORY EMPLOYEES
- 28. NUMBER OF SECRETARIAL/CLERICAL EMPLOYEES
- 29. NUMBER OF OTHER FULL-TIME EMPLOYEES

AGENCY PART-TIME EMPLOYMENT

- 30. TOTAL NUMBER OF PART-TIME EMPLOYEES
- 31. NUMBER OF ATTORNEYS
- 32. NUMBER OF INVESTIGATORS
- 33. NUMBER OF LEGAL SERVICE EMPLOYEES
- 34. NUMBER OF ADMINISTRATIVE AND SUPERVISORY EMPLOYEES
- 35. NUMBER OF SECRETARIAL/CLERICAL EMPLOYEES
- 36. NUMBER OF OTHER PART-TIME EMPLOYEES

AGENCY EMPLOYMENT SHARED WITH ANOTHER AGENCY

- 37. TOTAL NUMBER OF SHARED EMPLOYEES
- 38. NUMBER OF ATTORNEYS
- 39. NUMBER OF INVESTIGATORS
- 40. NUMBER OF LEGAL SERVICE EMPLOYEES
- 41. NUMBER OF ADMINISTRATIVE AND SUPERVISORY EMPLOYEES
- 42. NUMBER OF SECRETARIAL/CLERICAL EMPLOYEES
- 43. NUMBER OF OTHER SHARED EMPLOYEES

OTHER AGENCY INFORMATION

- 44. ATTORNEY COMPENSATION
- 45. AGENCY TITLED OFFICIAL ENGAGE IN PRIVATE PRACTICE?
- 46. OTHER ATTORNEYS ENGAGE IN PRIVATE PRACTICE?
- 47. AGENCY COMPILER WORKLOAD STATISTICS?
- 48. FUNDING CODE
- 49. IMPUTED PROSECUTION AGENCY

ICPSR PROCESSING VARIABLES

- 50. ICPSR STUDY NUMBER
- 51. ICPSR VERSION NUMBER
- 52. SEQUENTIAL IDENTIFIER

DECK IDENTIFICATION NUMBER IS '01'

DK 1 COL 1-2

VAR 0050 ICPSR STUDY NUMBER
REF 0050 LOC 132 WIDTH 4

NO MISSING DATA CODES
DK 1 COL 3-6

ICPSR STUDY NUMBER

VAR 0051 VERSION NUMBER
REF 0051 LOC 136 WIDTH 1

NO MISSING DATA CODES
DK 1 COL 7

VERSION NUMBER

VAR 0052 ID NUMBER
REF 0052 LOC 137 WIDTH 5

NO MISSING DATA CODES
DK 1 COL 8-12

SEQUENTIAL IDENTIFICATION NUMBER

A UNIQUE IDENTIFICATION NUMBER FOR EACH AGENCY.

VAR 0001 STATE CODE (GOVT DIV ID)
REF 0001 LOC 1 WIDTH 2

NO MISSING DATA CODES
DK 1 COL 13-14

STATE CODE

GOVERNMENT DIVISIONS STATE CODES

01 ALABAMA	19 LOUISIANA	36 OHIO
02 ALASKA	20 MAINE	37 OKLAHOMA
03 ARIZONA	21 MARYLAND	38 OREGON
04 ARKANSAS	22 MASSACHUSETTS	39 PENNSYLVANIA

(CONTINUED)

05 CALIFORNIA	23 MICHIGAN	40 RHODE ISLAND
06 COLORADO	24 MINNESOTA	41 SOUTH CAROLINA
07 CONNECTICUT	25 MISSISSIPPI	42 SOUTH DAKOTA
08 DELAWARE	26 MISSOURI	43 TENNESSEE
10 FLORIDA	27 MONTANA	44 TEXAS
11 GEORGIA	28 NEBRASKA	45 UTAH
12 HAWAII	29 NEVADA	46 VERMONT
13 IDAHO	30 NEW HAMPSHIRE	47 VIRGINIA
14 ILLINOIS	31 NEW JERSEY	48 WASHINGTON
15 INDIANA	32 NEW MEXICO	49 WEST VIRGINIA
16 IOWA	33 NEW YORK	50 WISCONSIN
17 KANSAS	34 NORTH CAROLINA	51 WYOMING
18 KENTUCKY	35 NORTH DAKOTA	09 DISTRICT OF COLUMBIA

.....

VAR 0002	TYPE (GOVT DIV ID)	NO MISSING DATA CODES
REF 0002	LOC 3 WIDTH 1	DK 1 COL 15

TYPE (GOVERNMENT DIVISION IDENTIFICATION)

- 0. STATE
- 1. COUNTY
- 2. CITY
- 3. TOWNSHIP

.....

VAR 0003	COUNTY (GOVT DIV ID)	NO MISSING DATA CODES
REF 0003	LOC 4 WIDTH 3	DK 1 COL 16-18

COUNTY (GOVERNMENT DIVISION IDENTIFICATION)

(CONTINUED)

SEE GOVERNMENT DIVISIONS COUNTY CODE.

.....

VAR 0004	CITY (GOVT DIV ID)	NO MISSING DATA CODES
REF 0004	LOC 7 WIDTH 3	DK 1 COL 19-21

CITY (GOVERNMENT DIVISION IDENTIFICATION)

SEE GOVERNMENT DIVISIONS CITY CODE.

.....

VAR 0005	CHECK DIGIT	NO MISSING DATA CODES
REF 0005	LOC 10 WIDTH 1	DK 1 COL 22

CHECK DIGIT

0.

9.

.....

VAR 0006	AGENCY	NO MISSING DATA CODES
REF 0006	LOC 11 WIDTH 1	DK 1 COL 23

PRIMARY AGENCY NUMBER

0. PROSECUTION AND LEGAL SERVICES IN ALL CASES

.....

VAR 0007	UNIT	NO MISSING DATA CODES
REF 0007	LOC 12 WIDTH 3	DK 1 COL 24-26

UNIQUE NUMBER

(CONTINUED)

ASSIGNS A CONSECUTIVE UNIQUE NUMBER TO EACH UNIT.

VAR 0008 TYPE NO MISSING DATA CODES
REF 0008 LOC 15 WIDTH 1 DK 1 COL 27

TYPE OF AGENCY CODE

- 1. STATE ATTORNEY GENERAL
- 2. AGENCY WHICH PROCESSES CRIMINAL AND CIVIL CASES
- 3. AGENCY WHICH PROCESSES CRIMINAL CASES
- 4. AGENCY WHICH TRIES CIVIL CASES
- 5. AGENCY WHICH PROVIDES LEGAL SERVICES ONLY, SUCH AS RESEARCH AND INVESTIGATION, GIVING LEGAL OPINIONS, COURTROOM ASSISTANCE (SHORT OF COURTROOM REPRESENTATION), ETC.
- 6. AGENCY WHICH TRIES OR HEARS JUVENILE MATTERS EXCLUSIVELY
- 7. POLICE PROSECUTOR
- 8. OTHER
- 9. BRANCH OFFICE

VAR 0009 EMPLOYEE NO MISSING DATA CODES
REF 0009 LOC 16 WIDTH 1 DK 1 COL 28

EMPLOYMENT CODE

- 0. NO EMPLOYEES
- 1. ONE EMPLOYEE
- 2. 2 TO 4 EMPLOYEES
- 3. 5 TO 9 EMPLOYEES
- 4. 10 TO 24 EMPLOYEES
- 5. 25 TO 49 EMPLOYEES
- 6. 50 TO 99 EMPLOYEES
- 7. 100 TO 199 EMPLOYEES
- 8. 200 TO 299 EMPLOYEES
- 9. 300 OR MORE EMPLOYEES

VAR 0010 JURISDICTION NO MISSING DATA CODES
REF 0010 LOC 17 WIDTH 1 DK 1 COL 29

JURISDICTION

- 1. FELONIES ONLY
- 2. MINOR CRIMINAL CASES ONLY - MISDEMEANORS, MUNICIPAL ORDINANCE VIOLATIONS, AND/OR FELONY PRELIMINARIES
- 3. TRAFFIC VIOLATIONS ONLY
- 4. JUVENILE MATTERS ONLY
- 5. FELONIES AND MINOR CRIMINAL CASES
- 6. FELONIES AND JUVENILE MATTERS
- 7. MINOR CRIMINAL CASES AND JUVENILE MATTERS
- 8. FELONIES, MINOR CRIMINAL CASES, AND JUVENILE MATTERS
- 9. NOT A PROSECUTING AGENCY (TRIES CIVIL CASES OR PROVIDES LEGAL SERVICES ONLY)

VAR 0011 FED PAYROLL FUNDING NO MISSING DATA CODES
REF 0011 LOC 18 WIDTH 3 DK 1 COL 30-32

SECTION 11 Q.1A WHAT PERCENTAGE OF YOUR AGENCY'S TOTAL PAYROLL FUNDING FOR ONE YEAR IS PROVIDED BY THE FEDERAL GOVERNMENT?

- 000.
- .
- .
- 100. PERCENT PAYROLL FUNDING

VAR 0012 STE PAYROLL FUNDING NO MISSING DATA CODES
REF 0012 LOC 21 WIDTH 3 DK 1 COL 33-35

SECTION 11 Q.2A WHAT PERCENTAGE OF YOUR AGENCY'S TOTAL PAYROLL FUNDING FOR ONE YEAR IS PROVIDED BY THE STATE GOVERNMENT?

000.

(CONTINUED)

100. PERCENT PAYROLL FUNDING

.....

VAR 0013	COU PAYROLL FUNDING	NO MISSING DATA CODES
REF 0013	LOC 24 WIDTH 3	DK 1 COL 36-38

SECTION 11 Q.3A WHAT PERCENTAGE OF YOUR AGENCY'S TOTAL PAYROLL FUNDING FOR ONE YEAR IS PROVIDED BY THE COUNTY GOVERNMENT?

000.

000. PERCENT PAYROLL FUNDING

.....

VAR 0014	MUN PAYROLL FUNDING	NO MISSING DATA CODES
REF 0014	LOC 27 WIDTH 3	DK 1 COL 39-41

SECTION 11 Q.4A WHAT PERCENTAGE OF YOUR AGENCY'S TOTAL PAYROLL FUNDING FOR ONE YEAR IS PROVIDED BY THE MUNICIPAL (CITY OR TOWN) GOVERNMENT?

000.

100. PERCENT PAYROLL FUNDING

.....

VAR 0015	TWP PAYROLL FUNDING	NO MISSING DATA CODES
REF 0015	LOC 30 WIDTH 3	DK 1 COL 42-44

SECTION 11 Q.5A WHAT PERCENTAGE OF YOUR AGENCY'S TOTAL PAYROLL FUNDING FOR ONE YEAR IS PROVIDED BY THE TOWNSHIP

(CONTINUED)

GOVERNMENT?

000.

100. PERCENT PAYROLL FUNDING

.....

VAR 0016	OTH PAYROLL FUNDING	NO MISSING DATA CODES
REF 0016	LOC 33 WIDTH 3	DK 1 COL 45-47

SECTION 11 Q.6A WHAT PERCENTAGE OF YOUR AGENCY'S TOTAL PAYROLL FUNDING FOR ONE YEAR IS PROVIDED BY OTHER (SPECIFY E.G., TWO OR MORE COUNTIES) SOURCES?

000.

100. PERCENT PAYROLL FUNDING

.....

VAR 0017	FED OTHER FUNDING	NO MISSING DATA CODES
REF 0017	LOC 36 WIDTH 3	DK 1 COL 48-50

SECTION 11 Q.1B WHAT PERCENTAGE OF ALL OTHER COSTS FOR YOUR AGENCY'S FUNDING FOR ONE YEAR (OTHER THAN PAYROLL) IS PROVIDED BY THE FEDERAL GOVERNMENT?

000.

100. PERCENT OF OTHER THAN PAYROLL FUNDING

VAR 0018 STE OTHER FUNDING NO MISSING DATA CODES
 REF 0018 LOC 39 WIDTH 3 DK 1 COL 51-53

SECTION II Q.1B WHAT PERCENTAGE OF ALL OTHER COSTS FOR YOUR
 AGENCY'S FUNDING FOR ONE YEAR (OTHER THAN PAYROLL) IS
 PROVIDED BY THE STATE GOVERNMENT?

000.
 .
 .
 100. PERCENT OF OTHER THAN PAYROLL FUNDING

VAR 0019 COU OTHER FUNDING NO MISSING DATA CODES
 REF 0019 LOC 42 WIDTH 3 DK 1 COL 54-56

SECTION II Q.1B WHAT PERCENTAGE OF ALL OTHER COSTS FOR YOUR
 AGENCY'S FUNDING FOR ONE YEAR (OTHER THAN PAYROLL) IS
 PROVIDED BY THE COUNTY GOVERNMENT?

000.
 .
 .
 100. PERCENT OF OTHER THAN PAYROLL FUNDING

VAR 0020 MUN OTHER FUNDING NO MISSING DATA CODES
 REF 0020 LOC 45 WIDTH 3 DK 1 COL 57-59

SECTION II Q.1B WHAT PERCENTAGE OF ALL OTHER COSTS FOR YOUR
 AGENCY'S FUNDING FOR ONE YEAR (OTHER THAN PAYROLL) IS
 PROVIDED BY THE MUNICIPAL (CITY OR TOWN) GOVERNMENT?

000.
 .
 .
 100. PERCENT OF OTHER THAN PAYROLL FUNDING

VAR 0021 TWP OTHER FUNDING NO MISSING DATA CODES
 REF 0021 LOC 48 WIDTH 3 DK 1 COL 60-62

SECTION II Q.1B WHAT PERCENTAGE OF ALL OTHER COSTS FOR YOUR
 AGENCY'S FUNDING FOR ONE YEAR (OTHER THAN PAYROLL) IS
 PROVIDED BY THE TOWNSHIP GOVERNMENT?

000.
 .
 .
 100. PERCENT OF OTHER THAN PAYROLL FUNDING

VAR 0022 OTH NO MISSING DATA CODES
 REF 0022 LOC 51 WIDTH 3 DK 1 COL 63-65

SECTION II Q.1B WHAT PERCENTAGE OF ALL OTHER COSTS FOR YOUR
 AGENCY'S FUNDING FOR ONE YEAR (OTHER THAN PAYROLL) IS
 PROVIDED BY OTHER (E.G., TWO OR MORE COUNTIES) SOURCES?

000.
 .
 .
 100. PERCENT OF OTHER THAN PAYROLL FUNDING

VAR 0023 TOTAL FULLTIME EMPLYS NO MISSING DATA CODES
 REF 0023 LOC 54 WIDTH 4 DK 1 COL 66-69

SECTION III Q.A THE TOTAL NUMBER OF FULL-TIME EMPLOYEES ON
 SEPTEMBER 1, 1976

ACTUAL NUMBER CODED.

VAR 0024 ATTYS FULLTIME EMPlys NO MISSING DATA CODES
REF 0024 LOC 58 WIDTH 4 DK 1 COL 70-73

SECTION III Q.1A THE NUMBER OF FULL-TIME ATTORNEYS EMPLOYED
ON SEPTEMBER 1, 1976

ACTUAL NUMBER CODED.

VAR 0025 INVEST. FULLTIME EMPlys NO MISSING DATA CODES
REF 0025 LOC 62 WIDTH 4 DK 1 COL 74-77

SECTION III Q.2A THE NUMBER OF FULL-TIME INVESTIGATORS,
INCLUDING INVESTIGATIVE ASSISTANTS, EMPLOYED ON
SEPTEMBER 1, 1976

ACTUAL NUMBER CODED.

DECK IDENTIFICATION NUMBER IS '02' DK 2 COL 1- 2

VAR 0050 ICPSR STUDY NUMBER NO MISSING DATA CODES
REF 0050 LOC 132 WIDTH 4 DK 2 COL 3- 6

ICPSR STUDY NUMBER

VAR 0051 VERSION NUMBER NO MISSING DATA CODES
REF 0051 LOC 136 WIDTH 1 DK 2 COL 7

VERSION NUMBER

VAR 0052 ID NUMBER NO MISSING DATA CODES
REF 0052 LOC 137 WIDTH 5 DK 2 COL 8-12

SEQUENTIAL IDENTIFICATION NUMBER

A UNIQUE IDENTIFICATION NUMBER FOR EACH AGENCY.

VAR 0026 LEG SERV FULLTIME EMPlys NO MISSING DATA CODES
REF 0026 LOC 66 WIDTH 4 DK 2 COL 13-16

SECTION III Q.2B THE NUMBER OF FULL-TIME LEGAL SERVICE
EMPLOYEES (E.G., LAW CLERKS OR LEGAL INTERNS, PARALEGAL AIDS,
ETC.) EMPLOYED ON SEPTEMBER 1, 1976

ACTUAL NUMBER CODED.

VAR 0027 ADM SUP FULLTIME EMPlys NO MISSING DATA CODES
REF 0027 LOC 70 WIDTH 4 DK 2 COL 17-20

SECTION III Q.2C THE NUMBER OF FULL-TIME ADMINISTRATIVE
SUPERVISORY EMPLOYEES, INCLUDING BUSINESS MANAGERS, OFFICE OR
CASE MANAGERS, ADMINISTRATIVE ASSISTANTS, ACCOUNTANTS, ETC.,
EMPLOYED ON SEPTEMBER 1, 1976

ACTUAL NUMBER CODED.

VAR 0028 SEC CLER FULLTIME EMPlys NO MISSING DATA CODES
REF 0028 LOC 74 WIDTH 4 DK 2 COL 21-24

SECTION III Q.2D THE NUMBER OF FULL-TIME
SECRETARIAL/CLERICAL EMPLOYEES, INCLUDING STENOGRAPHERS,
RECORD CLERKS, TYPISTS, ETC., EMPLOYED ON SEPTEMBER 1, 1976

ACTUAL NUMBER CODED.

VAR 0029 OTHER FULLTIME EMPlys NO MISSING DATA CODES
 REF 0029 LOC 78 WIDTH 3 DK 2 COL 25-27

SECTION III Q.2E THE NUMBER OF OTHER FULL-TIME EMPLOYEES,
 EMPLOYED ON SEPTEMBER 1, 1976

 ACTUAL NUMBER CODED.

VAR 0030 TOTAL PARTTIME EMPlys NO MISSING DATA CODES
 REF 0030 LOC 81 WIDTH 3 DK 2 COL 28-30

SECTION III Q.B THE TOTAL NUMBER OF PART-TIME EMPLOYEES ON
 SEPTEMBER 1, 1976

 ACTUAL NUMBER CODED.

VAR 0031 ATTYS PARTTIME EMPlys NO MISSING DATA CODES
 REF 0031 LOC 84 WIDTH 3 DK 2 COL 31-33

SECTION III Q.1B THE NUMBER OF PART-TIME ATTORNEYS EMPLOYED
 ON SEPTEMBER 1, 1976

 ACTUAL NUMBER CODED.

VAR 0032 INVEST. PARTTIME EMPlys NO MISSING DATA CODES
 REF 0032 LOC 87 WIDTH 3 DK 2 COL 34-36

SECTION III Q.1B THE NUMBER OF PART-TIME INVESTIGATORS,
 INCLUDING INVESTIGATIVE ASSISTANTS, EMPLOYED ON
 SEPTEMBER 1, 1976

 ACTUAL NUMBER CODED.

VAR 0033 LEG SER PARTTIME EMPlys NO MISSING DATA CODES
 REF 0033 LOC 90 WIDTH 3 DK 2 COL 37-39

SECTION III Q.1B THE NUMBER OF PART-TIME LEGAL SERVICE
 EMPLOYEES (E.G., LAW CLERKS OR LEGAL INTERNS, PARALEGAL AIDS,
 ETC.) EMPLOYED ON SEPTEMBER 1, 1976

 ACTUAL NUMBER CODED.

VAR 0034 ADM SUP PARTTIME EMPlys NO MISSING DATA CODES
 REF 0034 LOC 93 WIDTH 3 DK 2 COL 40-42

SECTION III Q.1B THE NUMBER OF PART-TIME ADMINISTRATIVE
 SUPERVISORY EMPLOYEES, INCLUDING BUSINESS MANAGERS, OFFICE OR
 CASE MANAGERS, ADMINISTRATIVE ASSISTANTS, ACCOUNTANTS, ETC.,
 EMPLOYED ON SEPTEMBER 1, 1976

 ACTUAL NUMBER CODED.

VAR 0035 SEC CLER PARTTIME EMPlys NO MISSING DATA CODES
 REF 0035 LOC 96 WIDTH 3 DK 2 COL 43-45

SECTION III Q.1B THE NUMBER OF PART-TIME
 SECRETARIAL/CLERICAL EMPLOYEES, INCLUDING STENOGRAPHERS,
 RECORD CLERKS, TYPISTS, ETC., EMPLOYED ON SEPTEMBER 1, 1976

 ACTUAL NUMBER CODED.

VAR 0036 OTHER PARTTIME EMPlys NO MISSING DATA CODES
 REF 0036 LOC 99 WIDTH 3 DK 2 COL 46-48

SECTION III Q.1B THE NUMBER OF OTHER PART-TIME EMPLOYEES,
 EMPLOYED ON SEPTEMBER 1, 1976

 ACTUAL NUMBER CODED.

VAR 0037 TOTAL SHARED EMPLOYEE NO MISSING DATA CODES
REF 0037 LOC 102 WIDTH 3 DK 2 COL 49-51

SECTION III Q.C THE TOTAL NUMBER OF EMPLOYEES, SHARED WITH ANOTHER AGENCY, EMPLOYED ON SEPTEMBER 1, 1976

ACTUAL NUMBER CODED.

VAR 0038 ATTYS SHARED EMPLOYEE NO MISSING DATA CODES
REF 0038 LOC 105 WIDTH 3 DK 2 COL 52-54

SECTION III Q.1C THE NUMBER OF ATTORNEYS, SHARED WITH ANOTHER AGENCY, EMPLOYED ON SEPTEMBER 1, 1976

ACTUAL NUMBER CODED.

VAR 0039 INVEST. SHARED EMPLOYEE NO MISSING DATA CODES
REF 0039 LOC 108 WIDTH 3 DK 2 COL 55-57

SECTION III Q.1C THE NUMBER OF INVESTIGATORS, INCLUDING INVESTIGATIVE ASSISTANTS, SHARED WITH ANOTHER AGENCY, EMPLOYED ON SEPTEMBER 1, 1976

ACTUAL NUMBER CODED.

VAR 0040 LEG SER SHARED EMPLOYEE NO MISSING DATA CODES
REF 0040 LOC 111 WIDTH 3 DK 2 COL 58-60

SECTION III Q.1C THE NUMBER OF LEGAL SERVICE EMPLOYEES (E.G., LAW CLERKS OR LEGAL INTERNS, PARALEGAL AIDS, ETC.), SHARED WITH ANOTHER AGENCY, EMPLOYED ON SEPTEMBER 1, 1976

ACTUAL NUMBER CODED.

VAR 0041 ADM SUP SHARE EMPLOYEE NO MISSING DATA CODES
REF 0041 LOC 114 WIDTH 3 DK 2 COL 61-63

SECTION III Q.1C THE NUMBER OF ADMINISTRATIVE/SUPERVISORY EMPLOYEES, INCLUDING BUSINESS MANAGERS, OFFICE OR CASE MANAGERS, ADMINISTRATIVE ASSISTANTS, ACCOUNTANTS, ETC., SHARED WITH ANOTHER AGENCY, EMPLOYED ON SEPTEMBER 1, 1976

ACTUAL NUMBER CODED.

VAR 0042 SEC CLER SHARE EMPLOYEE NO MISSING DATA CODES
REF 0042 LOC 117 WIDTH 3 DK 2 COL 64-66

SECTION III Q.1C THE NUMBER OF SECRETARIAL/CLERICAL EMPLOYEES, INCLUDING STENOGRAPHERS, RECORD CLERKS, TYPISTS, ETC., SHARED WITH ANOTHER AGENCY, EMPLOYED ON SEPTEMBER 1, 1976

ACTUAL NUMBER CODED.

VAR 0043 OTHER SHARE EMPLOYEE NO MISSING DATA CODES
REF 0043 LOC 120 WIDTH 3 DK 2 COL 67-69

SECTION III Q.1C THE NUMBER OF OTHER EMPLOYEES, SHARED WITH ANOTHER AGENCY, EMPLOYED ON SEPTEMBER 1, 1976

ACTUAL NUMBER CODED.

VAR 0044 COMPENSATION NO MISSING DATA CODES
REF 0044 LOC 123 WIDTH 4 DK 2 COL 70-73

SECTION III Q.B. HOW ARE ATTORNEYS COMPENSATED FOR THE WORK PERFORMED FOR THE AGENCY?

MARK AS MANY CODES AS APPLICABLE.

(CONTINUED)

- 1. SALARY
- 2. FEES - PAID STRICTLY FOR A SPECIFIC CASE OR SERVICE
- 3. RETAINER - PAYMENT FOR SERVICES TO BE PERFORMED WHEN REQUESTED
- 4. OTHER

.....

VAR 0045 PRIVATE NO MISSING DATA CODES
 REF 0045 LOC 127 WIDTH 1 DK 2 COL 74

SECTION III Q.C. MAY THE TITLED OFFICIAL IN YOUR AGENCY
 ENGAGE IN PRIVATE PRACTICE?

- 1. YES
- 2. NO

.....

VAR 0046 PRACTICE NO MISSING DATA CODES
 REF 0046 LOC 128 WIDTH 1 DK 2 COL 75

SECTION III Q.C. MAY THE OTHER ATTORNEYS IN YOUR AGENCY
 ENGAGE IN PRIVATE PRACTICE?

- 1. YES
- 2. NO
- 3. NOT APPLICABLE

.....

VAR 0047 STATISTICS NO MISSING DATA CODES
 REF 0047 LOC 129 WIDTH 1 DK 2 COL 76

SECTION IV Q. DOES YOUR AGENCY ROUTINELY COMPILE STATISTICS
 ON WORKLOAD?

- 1. YES
- 2. NO

VAR 0048
 REF 0048

FUNDING
 LOC 130 WIDTH 1

NO MISSING DATA CODES
 DK 2 COL 77

FUNDING CODE (PAYROLL)

- 1. 100% FEDERAL
- 2. 100% STATE
- 3. 100% COUNTY
- 4. 100% MUNICIPAL/TOWNSHIP
- 5. 51-99% FEDERAL
- 6. 51-99% STATE
- 7. 51-99% COUNTY
- 8. 51-99% MUNICIPAL/TOWNSHIP
- 9. OTHER

VAR 0049
 REF 0049

IMPUTED PROS AG
 LOC 131 WIDTH 1

NO MISSING DATA CODES
 DK 2 COL 78

IMPUTED PROSECUTION AGENCY

- 0. NO IMPUTATION
- 9. IMPUTED DATA ENTERED

APPENDIX A

RELIABILITY OF ESTIMATES

THE PARTICULAR SAMPLE USED FOR THIS STUDY WAS ONLY ONE A LARGE NUMBER OF POSSIBLE SAMPLES OF THE SAME SIZE THAT COULD HAVE BEEN SELECTED USING THE SAME DESIGN AND SAMPLE SELECTION PROCEDURES. ESTIMATES DERIVED FROM DIFFERENT SAMPLES WOULD DIFFER FROM EACH OTHER. THE STANDARD ERROR OF A SURVEY ESTIMATE IS A MEASURE OF THE VARIATION AMONG THE ESTIMATES FROM ALL POSSIBLE AND IS, THEREFORE, A MEASURE OF THE PRECISION WITH WHICH THE ESTIMATE FROM A PARTICULAR SAMPLE APPROXIMATES THE AVERAGE OF ALL POSSIBLE SAMPLE ESTIMATES. THE ESTIMATE AND ITS ASSOCIATED STANDARD ERROR MAY BE USED TO CONSTRUCT AN APPROXIMATE CONFIDENCE INTERVAL—THAT IS, AN INTERVAL HAVING A PRESCRIBED PROBABILITY THAT IT WOULD INCLUDE THE AVERAGE OF ALL POSSIBLE SAMPLE ESTIMATES. THIS AVERAGE MAY OR MAY NOT BE CONTAINED IN ANY PARTICULAR COMPUTED INTERVAL. BUT, FOR A PARTICULAR SAMPLE, IT CAN BE DETERMINED WITH SPECIFIC CONFIDENCE THAT THE AVERAGE OF ALL POSSIBLE SAMPLE ESTIMATES IS INCLUDED IN THE CONSTRUCTED INTERVAL.

IF ALL POSSIBLE SAMPLES WERE SELECTED UNDER ESSENTIALLY THE

SAME GENERAL CONDITIONS AND USING THE SAME SAMPLE DESIGN,
AND IF AN ESTIMATE AND ITS ESTIMATED STANDARD ERROR WERE
CALCULATED FROM EACH SAMPLE, THEN:

1. APPROXIMATELY 68 PERCENT OF THE INTERVALS FROM ONE
STANDARD ERROR BELOW THE ESTIMATE TO ONE STANDARD
ERROR ABOVE THE ESTIMATE WOULD INCLUDE THE AVERAGE
FOR ALL POSSIBLE SAMPLES.
2. APPROXIMATELY 90 PERCENT OF THE INTERVALS FROM
FROM 1.6 STANDARD ERRORS BELOW THE ESTIMATE TO
TO 1.6 STANDARD ERRORS ABOVE THE ESTIMATE WOULD
INCLUDE THE AVERAGE FOR ALL POSSIBLE SAMPLES.
3. APPROXIMATELY 95 PERCENT OF THE INTERVALS FROM
TWO STANDARD ERRORS BELOW THE ESTIMATE TO TWO
STANDARD ERRORS ABOVE THE ESTIMATE WOULD INCLUDE
THE AVERAGE FOR ALL POSSIBLE SAMPLES.

ANALYSIS 1

VARIABLE	V1	STATE CODE (GOVT DIV ID)															
Code		1	2	3	4	5	6	7	8	9	10	11	12	13	14	15	
Frequency		119	40	62	230	335	88	31	7	1	285	428	8	85	289	287	
Percent		1.3	0.4	0.7	2.5	3.6	1.0	0.3	0.1	0.0	3.1	4.6	0.1	0.9	3.1	3.1	
Code		16	17	18	19	20	21	22	23	24	25	26	27	28	29	30	
Frequency		159	253	262	68	18	118	306	437	538	127	224	126	294	28	25	
Percent		1.7	2.7	2.8	0.7	0.2	1.3	3.3	4.7	5.8	1.4	2.4	1.4	3.2	0.3	0.3	
Code		31	32	33	34	35	36	37	38	39	40	41	42	43	44	45	
Frequency		444	61	285	155	169	369	102	85	211	36	69	138	234	590	121	
Percent		4.8	0.7	3.1	1.7	1.8	4.0	1.1	0.9	2.3	0.4	0.7	1.5	2.5	6.4	1.3	
Code		46	47	48	49	50	51	TOTAL									
Frequency		27	247	156	155	255	42	9,229									
Percent		0.3	2.7	1.7	1.7	2.8	0.5	100.0									

ANALYSIS 2

VARIABLE	V2	TYPE (GOVT DIV ID)				
Code		0	1	2	3	TOTAL
Frequency		654	2,802	5,204	569	9,229
Percent		7.1	30.4	56.4	6.2	100.0

ANALYSIS 3

VARIABLE	V3	COUNTY (GOVT DIV ID)														
Code		1	2	3	4	5	6	7	8	9	10	11	12	13	14	15
Frequency		178	211	166	154	169	152	192	127	165	129	146	153	174	177	125
Percent		1.9	2.3	1.8	1.7	1.8	1.6	2.1	1.4	1.8	1.4	1.6	1.7	1.9	1.9	1.4
Code		16	17	18	19	20	21	22	23	24	25	26	27	28	29	30
Frequency		174	131	159	171	136	108	113	104	108	116	98	141	99	97	117
Percent		1.9	1.4	1.7	1.9	1.5	1.2	1.2	1.1	1.2	1.3	1.1	1.5	1.1	1.1	1.3
Code		31	32	33	34	35	36	37	38	39	40	41	42	43	44	45
Frequency		110	93	83	100	102	94	94	83	87	80	99	77	95	79	90
Percent		1.2	1.0	0.9	1.1	1.1	1.0	1.0	0.9	0.9	0.9	1.1	0.8	1.0	0.9	1.0
Code		46	47	48	49	50	51	52	53	54	55	56	57	58	59	60
Frequency		92	82	83	86	108	73	98	76	74	65	75	87	68	72	109
Percent		1.0	0.9	0.9	0.9	1.2	0.8	1.1	0.8	0.8	0.7	0.8	0.9	0.7	0.8	1.2

Code	61	62	63	64	65	66	67	68	69	70	71	72	73	74	75
Frequency	54	66	75	61	52	40	54	48	55	59	51	58	63	40	41
Percent	0.6	0.7	0.8	0.7	0.6	0.4	0.6	0.5	0.6	0.6	0.6	0.6	0.7	0.4	0.4
Code	76	77	78	79	80	81	82	83	84	85	86	87	88	89	90
Frequency	50	44	46	55	38	45	76	36	37	39	34	41	23	28	24
Percent	0.5	0.5	0.5	0.6	0.4	0.5	0.8	0.4	0.4	0.4	0.4	0.4	0.2	0.3	0.3
Code	91	92	93	94	95	96	97	98	99	100	101	102	103	104	105
Frequency	27	30	24	18	48	22	17	24	20	17	27	11	11	13	11
Percent	0.3	0.3	0.3	0.2	0.5	0.2	0.2	0.3	0.2	0.2	0.3	0.1	0.1	0.1	0.1
Code	106	107	108	109	110	111	112	113	114	115	116	117	118	119	120
Frequency	12	13	13	9	11	6	8	9	9	8	9	9	6	7	8
Percent	0.1	0.1	0.1	0.1	0.1	0.1	0.1	0.1	0.1	0.1	0.1	0.1	0.1	0.1	0.1
Code	121	122	123	124	125	126	127	128	129	130	131	132	133	134	135
Frequency	8	5	6	6	7	8	9	9	9	4	3	7	7	7	5
Percent	0.1	0.1	0.1	0.1	0.1	0.1	0.1	0.1	0.1	0.0	0.0	0.1	0.1	0.1	0.1
Code	136	137	138	139	140	141	142	143	144	145	146	147	148	149	150
Frequency	8	8	7	3	6	5	3	5	3	5	9	5	4	3	4
Percent	0.1	0.1	0.1	0.0	0.1	0.1	0.0	0.1	0.0	0.1	0.1	0.1	0.0	0.0	0.0
Code	151	152	153	154	155	156	157	158	159	160	161	162	163	164	165
Frequency	5	6	3	4	11	3	3	3	3	1	3	2	3	1	3
Percent	0.1	0.1	0.0	0.0	0.1	0.0	0.0	0.0	0.0	0.0	0.0	0.0	0.0	0.0	0.0
Code	166	167	168	169	170	171	172	173	174	175	176	177	178	179	180
Frequency	2	1	3	2	3	3	1	1	3	3	2	2	4	1	1
Percent	0.0	0.0	0.0	0.0	0.0	0.0	0.0	0.0	0.0	0.0	0.0	0.0	0.0	0.0	0.0
Code	181	182	183	184	185	186	187	188	189	190	191	192	193	194	195
Frequency	2	2	3	3	2	2	2	3	2	1	1	2	1	1	2
Percent	0.0	0.0	0.0	0.0	0.0	0.0	0.0	0.0	0.0	0.0	0.0	0.0	0.0	0.0	0.0
Code	196	198	199	200	201	202	203	204	205	206	207	208	209	210	211
Frequency	1	3	2	3	2	2	2	1	7	2	1	3	1	1	2
Percent	0.0	0.0	0.0	0.0	0.0	0.0	0.0	0.0	0.1	0.0	0.0	0.0	0.0	0.0	0.0
Code	212	213	214	215	216	217	218	219	220	221	222	223	224	225	226
Frequency	2	1	2	1	1	1	1	1	19	3	1	2	1	3	4
Percent	0.0	0.0	0.0	0.0	0.0	0.0	0.0	0.0	0.2	0.0	0.0	0.0	0.0	0.0	0.0
Code	227	228	229	230	231	232	233	234	235	236	237	238	239	240	241
Frequency	5	2	2	2	2	3	3	4	1	2	3	3	2	2	1

Code	135	136	137	138	139	140	141	142	143	144	145	146	147	148	149
Frequency	1	3	3	3	2	3	3	2	2	2	2	3	2	3	2
Percent	0.0	0.0	0.0	0.0	0.0	0.0	0.0	0.0	0.0	0.0	0.0	0.0	0.0	0.0	0.0
Code	150	151	152	153	154	155	156	157	158	159	160	161	162	163	164
Frequency	3	2	1	2	2	1	1	2	2	3	1	1	1	1	1
Percent	0.0	0.0	0.0	0.0	0.0	0.0	0.0	0.0	0.0	0.0	0.0	0.0	0.0	0.0	0.0
Code	165	166	167	168	169	170	171	172	173	174	176	177	178	179	180
Frequency	1	1	1	1	1	1	1	1	1	1	1	1	1	1	1
Percent	0.0	0.0	0.0	0.0	0.0	0.0	0.0	0.0	0.0	0.0	0.0	0.0	0.0	0.0	0.0
Code	181	182	183	184	185	186	187	188	189	190	192	193	194	195	196
Frequency	1	1	1	1	1	1	1	1	1	1	1	1	1	1	1
Percent	0.0	0.0	0.0	0.0	0.0	0.0	0.0	0.0	0.0	0.0	0.0	0.0	0.0	0.0	0.0
Code	198	200	201	202	203	204	205	206	207	208	209	210	211	213	214
Frequency	1	1	1	1	1	1	1	1	1	1	1	1	1	1	1
Percent	0.0	0.0	0.0	0.0	0.0	0.0	0.0	0.0	0.0	0.0	0.0	0.0	0.0	0.0	0.0
Code	215	216	217	218	219	222	223	224	225	226	227	228	229	231	232
Frequency	1	1	1	1	1	1	1	1	1	1	1	1	1	1	1
Percent	0.0	0.0	0.0	0.0	0.0	0.0	0.0	0.0	0.0	0.0	0.0	0.0	0.0	0.0	0.0
Code	233	236	237	238	239	240	241	242	243	244	245	246	247	248	249
Frequency	1	1	1	1	1	1	1	1	1	1	1	1	1	1	1
Percent	0.0	0.0	0.0	0.0	0.0	0.0	0.0	0.0	0.0	0.0	0.0	0.0	0.0	0.0	0.0
Code	250	251	252	253	254	501	502	503	504	505	506	507	508	509	510
Frequency	1	1	1	1	1	73	14	18	4	7	3	4	5	3	2
Percent	0.0	0.0	0.0	0.0	0.0	0.8	0.2	0.2	0.0	0.1	0.0	0.0	0.1	0.0	0.0
Code	511	512	513	514	517	518	519	520	521	522	701	702	703	704	705
Frequency	4	1	1	2	1	1	1	1	1	1	47	13	3	2	1
Percent	0.0	0.0	0.0	0.0	0.0	0.0	0.0	0.0	0.0	0.0	0.5	0.1	0.0	0.0	0.0
Code	706	707	801	802	803	837	845	850	TOTAL						
Frequency	1	1	40	10	3	1	1	1	9,229						
Percent	0.0	0.0	0.4	0.1	0.0	0.0	0.0	0.0	100.0						

ANALYSIS - E

VARIABLE	V5	CHECK DIGIT									TOTAL
Code	0	1	2	3	4	5	6	7	8	9	TOTAL
Frequency	871	938	931	899	904	965	910	925	931	955	9,229

Percent	9.4	10.2	10.1	9.7	9.8	10.5	9.9	10.0	10.1	10.3	100.0
---------	-----	------	------	-----	-----	------	-----	------	------	------	-------

ANALYSIS 6

VARIABLE	V6	AGENCY
Code	0	TOTAL
Frequency	9,229	9,229
Percent	100.0	100.0

ANALYSIS 7

VARIABLE	V7	UNIT
Code	0	1 2 3 4 5 6 10 15 20 25 30 35 40 45
Frequency	8	7,930 619 51 5 21 3 17 18 17 18 19 17 18 17
Percent	0.1	85.9 6.7 0.6 0.1 0.2 0.0 0.2 0.2 0.2 0.2 0.2 0.2 0.2 0.2
Code	50	55 60 65 70 75 76 80 85 90 95 100 105 110 115
Frequency	17	17 16 16 16 15 1 15 14 14 14 14 11 11 11
Percent	0.2	0.2 0.2 0.2 0.2 0.2 0.0 0.2 0.2 0.2 0.2 0.2 0.1 0.1 0.1
Code	120	125 130 135 140 145 150 155 160 165 170 175 180 185 190
Frequency	10	9 9 9 8 8 8 7 8 6 7 7 5 6 6
Percent	0.1	0.1 0.1 0.1 0.1 0.1 0.1 0.1 0.1 0.1 0.1 0.1 0.1 0.1 0.1
Code	195	200 205 210 215 220 225 230 235 240 245 250 255 260 265
Frequency	5	4 4 3 3 3 3 3 3 3 3 3 3 3 3
Percent	0.1	0.0 0.0 0.0 0.0 0.0 0.0 0.0 0.0 0.0 0.0 0.0 0.0 0.0 0.0
Code	270	275 280 285 290 295 300 305 310 315 320 325 330 335 340
Frequency	3	3 3 2 2 2 2 2 2 2 2 1 2 2 2
Percent	0.0	0.0 0.0 0.0 0.0 0.0 0.0 0.0 0.0 0.0 0.0 0.0 0.0 0.0 0.0
Code	345	350 355 360 365 370 375 380 385 390 395 400 405 410 415
Frequency	2	2 2 2 1 1 1 1 1 1 1 2 2 2 2
Percent	0.0	0.0 0.0 0.0 0.0 0.0 0.0 0.0 0.0 0.0 0.0 0.0 0.0 0.0 0.0
Code	420	425 430 435 440 445 446 450 455 460 465 470 475 480 485
Frequency	2	2 2 2 2 2 1 1 1 1 1 1 1 1 1
Percent	0.0	0.0 0.0 0.0 0.0 0.0 0.0 0.0 0.0 0.0 0.0 0.0 0.0 0.0 0.0
Code	490	495 500 505 510 515 520 525 530 535 TOTAL
Frequency	1	1 1 1 1 1 1 1 1 2 9,229
Percent	0.0	0.0 0.0 0.0 0.0 0.0 0.0 0.0 0.0 0.0 100.0

ANALYSIS 8

VARIABLE	V8	TYPE							TOTAL
Code	1	2	3	4	5	6	7		
Frequency	50	4,803	2,700	1,424	177	1	74	9,229	
Percent	0.5	52.0	29.3	15.4	1.9	0.0	0.8	100.0	

ANALYSIS 9

VARIABLE	V9	EMPLOYEE										TOTAL
Code	0	1	2	3	4	5	6	7	8	9		
Frequency	1	4,362	3,306	832	417	127	93	50	23	18	9,229	
Percent	0.0	47.3	35.8	9.0	4.5	1.4	1.0	0.5	0.2	0.2	100.0	

ANALYSIS 10

VARIABLE	V10	JURISDICTION									TOTAL
Code	0	1	2	3	4	5	6	7	8	9	
Frequency	1	82	4,540	111	59	347	47	364	2,070	1,608	9,229
Percent	0.0	0.9	49.2	1.2	0.6	3.8	0.5	3.9	22.4	17.4	100.0

ANALYSIS 11

VARIABLE	V11	FED PAYROLL FUNDING															
Code	0	1	2	3	4	5	6	7	8	9	10	11	12	13	14		
Frequency	8,384	33	42	20	12	77	10	15	30	21	122	11	12	8	11		
Percent	90.8	0.4	0.5	0.2	0.1	0.8	0.1	0.2	0.3	0.2	1.3	0.1	0.1	0.1	0.1		
Code	15	16	17	18	19	20	21	22	23	24	25	26	27	28	29		
Frequency	44	12	11	16	5	77	10	8	5	2	38	3	3	11	4		
Percent	0.5	0.1	0.1	0.2	0.1	0.8	0.1	0.1	0.1	0.0	0.4	0.0	0.0	0.1	0.0		
Code	30	31	32	33	34	35	36	38	39	40	41	42	43	44	45		
Frequency	29	4	3	7	7	13	3	4	1	21	1	2	2	1	5		
Percent	0.3	0.0	0.0	0.1	0.1	0.1	0.0	0.0	0.0	0.2	0.0	0.0	0.0	0.0	0.1		
Code	48	50	51	52	54	55	57	60	67	70	72	75	76	80	83		

Frequency	2	16	1	1	2	1	1	8	1	2	1	7	1	4	1
Percent	0.0	0.2	0.0	0.0	0.0	0.0	0.0	0.1	0.0	0.0	0.0	0.1	0.0	0.0	0.0
Code	90	95	98	100	TOTAL										
Frequency	9	1	1	9	9,229										
Percent	0.1	0.0	0.0	0.1	100.0										

ANALYSIS 12

VARIABLE V12 STE PAYROLL FUNDING

Code	0	1	2	3	4	5	6	7	8	9	10	11	12	13	14
Frequency	7,974	34	20	11	11	40	5	4	9	5	54	5	13	6	3
Percent	86.4	0.4	0.2	0.1	0.1	0.4	0.1	0.0	0.1	0.1	0.6	0.1	0.1	0.1	0.0
Code	15	16	17	18	19	20	21	22	23	24	25	26	27	28	29
Frequency	22	2	3	3	3	95	1	3	3	4	38	2	1	1	1
Percent	0.2	0.0	0.0	0.0	0.0	1.0	0.0	0.0	0.0	0.0	0.4	0.0	0.0	0.0	0.0
Code	30	31	32	33	34	35	36	37	38	39	40	41	42	43	44
Frequency	38	1	2	9	6	7	1	4	4	1	41	6	3	2	4
Percent	0.4	0.0	0.0	0.1	0.1	0.1	0.0	0.0	0.0	0.0	0.4	0.1	0.0	0.0	0.0
Code	45	46	47	48	49	50	51	52	53	54	55	56	57	58	59
Frequency	14	1	4	3	2	186	1	1	3	2	13	1	1	1	5
Percent	0.2	0.0	0.0	0.0	0.0	2.0	0.0	0.0	0.0	0.0	0.1	0.0	0.0	0.0	0.1
Code	60	61	63	64	65	66	67	68	69	70	73	75	76	77	78
Frequency	61	3	4	1	7	6	5	2	1	38	1	14	3	1	1
Percent	0.7	0.0	0.0	0.0	0.1	0.1	0.1	0.0	0.0	0.4	0.0	0.2	0.0	0.0	0.0
Code	80	81	82	83	85	86	87	88	89	90	91	92	93	94	95
Frequency	21	1	1	2	10	2	2	2	4	24	1	3	2	1	19
Percent	0.2	0.0	0.0	0.0	0.1	0.0	0.0	0.0	0.0	0.3	0.0	0.0	0.0	0.0	0.2
Code	96	97	98	99	100	TOTAL									
Frequency	2	2	7	8	224	9,229									
Percent	0.0	0.0	0.1	0.1	2.4	100.0									

ANALYSIS 13

VARIABLE V13 COU PAYROLL FUNDING

Code	0	1	2	3	4	5	6	7	8	9	10	11	12	13	14
Frequency	6,012	9	10	4	4	37	2	1	1	2	31	4	1	5	4
Percent	65.1	0.1	0.1	0.0	0.0	0.4	0.0	0.0	0.0	0.0	0.3	0.0	0.0	0.1	0.0

Code	15	16	17	18	19	20	21	22	23	24	25	26	27	28	29
Frequency	14	4	3	1	3	34	1	4	6	1	25	1	3	1	2
Percent	0.2	0.0	0.0	0.0	0.0	0.4	0.0	0.0	0.1	0.0	0.3	0.0	0.0	0.0	0.0
Code	30	31	32	33	34	35	36	37	40	41	42	43	44	45	46
Frequency	35	4	2	8	4	7	1	3	69	4	2	2	1	12	1
Percent	0.4	0.0	0.0	0.1	0.0	0.1	0.0	0.0	0.7	0.0	0.0	0.0	0.0	0.1	0.0
Code	47	48	49	50	51	52	53	54	55	56	57	58	59	60	61
Frequency	1	3	1	149	2	2	2	1	12	1	3	2	3	55	3
Percent	0.0	0.0	0.0	1.6	0.0	0.0	0.0	0.0	0.1	0.0	0.0	0.0	0.0	0.6	0.0
Code	62	63	64	65	66	67	68	69	70	71	72	73	74	75	76
Frequency	4	3	2	14	10	13	5	6	37	4	3	3	1	43	4
Percent	0.0	0.0	0.0	0.2	0.1	0.1	0.1	0.1	0.4	0.0	0.0	0.0	0.0	0.5	0.0
Code	77	78	79	80	81	82	83	84	85	86	87	88	89	90	91
Frequency	4	8	4	115	3	9	4	5	26	5	6	11	9	77	7
Percent	0.0	0.1	0.0	1.2	0.0	0.1	0.0	0.1	0.3	0.1	0.1	0.1	0.1	0.8	0.1
Code	92	93	94	95	96	97	98	99	100	TOTAL					
Frequency	17	9	8	31	9	6	24	18	2,037	9,229					
Percent	0.2	0.1	0.1	0.3	0.1	0.1	0.3	0.2	22.1	100.0					

ANALYSIS 14

VARIABLE V14 MUN PAYROLL FUNDING

Code	0	1	2	3	5	6	8	9	10	11	12	14	17	20	25
Frequency	4,029	2	2	2	3	1	2	1	2	1	1	1	1	7	7
Percent	43.7	0.0	0.0	0.0	0.0	0.0	0.0	0.0	0.0	0.0	0.0	0.0	0.0	0.1	0.1
Code	30	34	35	40	48	50	51	52	55	58	60	62	65	66	67
Frequency	3	1	2	3	2	39	1	1	3	1	10	1	2	2	1
Percent	0.0	0.0	0.0	0.0	0.0	0.4	0.0	0.0	0.0	0.0	0.1	0.0	0.0	0.0	0.0
Code	68	69	70	71	72	73	74	75	76	78	79	80	81	82	83
Frequency	2	1	10	2	1	1	1	7	1	1	4	31	1	4	4
Percent	0.0	0.0	0.1	0.0	0.0	0.0	0.0	0.1	0.0	0.0	0.0	0.3	0.0	0.0	0.0
Code	84	85	86	87	88	89	90	91	92	93	94	95	96	97	98
Frequency	4	22	6	2	2	2	33	2	6	2	3	32	5	9	14
Percent	0.0	0.2	0.1	0.0	0.0	0.0	0.4	0.0	0.1	0.0	0.0	0.3	0.1	0.1	0.2

Code	52	53	54	60	61	65	70	72	73	75	76	78	80	88	90
Frequency	1	2	1	4	1	1	2	1	1	10	1	1	3	1	10
Percent	0.0	0.0	0.0	0.0	0.0	0.0	0.0	0.0	0.0	0.1	0.0	0.0	0.0	0.0	0.1
Code	95	99	100	TOTAL											
Frequency	2	1	7	9,229											
Percent	0.0	0.0	0.1	100.0											

ANALYSIS 18

VARIABLE	V18	STE	OTHER	FUNDING											
Code	0	1	2	3	4	5	6	7	8	9	10	11	12	13	15
Frequency	8,475	33	13	5	2	40	4	5	5	1	30	2	5	3	9
Percent	91.8	0.4	0.1	0.1	0.0	0.4	0.0	0.1	0.1	0.0	0.3	0.0	0.1	0.0	0.1
Code	16	17	18	19	20	21	22	23	24	25	28	30	33	34	35
Frequency	3	5	3	3	77	1	3	1	4	22	1	21	2	3	4
Percent	0.0	0.1	0.0	0.0	0.8	0.0	0.0	0.0	0.0	0.2	0.0	0.2	0.0	0.0	0.0
Code	36	37	38	40	41	43	44	45	46	47	49	50	55	58	59
Frequency	1	1	1	14	2	1	1	5	1	2	3	131	4	1	2
Percent	0.0	0.0	0.0	0.2	0.0	0.0	0.0	0.1	0.0	0.0	0.0	1.4	0.0	0.0	0.0
Code	60	62	63	64	66	67	70	71	75	79	80	82	83	85	88
Frequency	12	1	1	2	2	4	8	1	7	2	10	1	3	10	1
Percent	0.1	0.0	0.0	0.0	0.0	0.0	0.1	0.0	0.1	0.0	0.1	0.0	0.0	0.1	0.0
Code	89	90	92	95	96	97	98	99	100	TOTAL					
Frequency	2	20	1	13	3	4	4	9	153	9,229					
Percent	0.0	0.2	0.0	0.1	0.0	0.0	0.0	0.1	1.7	100.0					

ANALYSIS 19

VARIABLE	V19	COU	OTHER	FUNDING											
Code	0	1	2	3	4	5	9	10	11	12	13	14	15	17	18
Frequency	6,402	14	8	2	3	22	1	27	2	1	3	1	8	1	1
Percent	69.4	0.2	0.1	0.0	0.0	0.2	0.0	0.3	0.0	0.0	0.0	0.0	0.1	0.0	0.0
Code	20	22	23	24	25	27	28	29	30	31	33	34	35	37	39
Frequency	14	3	4	3	13	2	1	1	11	1	4	2	2	1	3
Percent	0.2	0.0	0.0	0.0	0.1	0.0	0.0	0.0	0.1	0.0	0.0	0.0	0.0	0.0	0.0

Code	40	42	45	47	48	49	50	52	53	55	56	57	58	59	60
Frequency	7	1	3	2	2	1	106	2	1	4	2	2	3	2	16
Percent	0.1	0.0	0.0	0.0	0.0	0.0	1.1	0.0	0.0	0.0	0.0	0.0	0.0	0.0	0.2
Code	61	62	63	64	65	66	67	68	70	71	72	73	75	76	77
Frequency	1	1	2	2	5	2	3	2	26	3	5	1	23	3	2
Percent	0.0	0.0	0.0	0.0	0.1	0.0	0.0	0.0	0.3	0.0	0.1	0.0	0.2	0.0	0.0
Code	78	79	80	81	82	83	84	85	87	88	89	90	91	92	93
Frequency	3	1	88	3	6	3	1	12	4	8	6	50	3	8	5
Percent	0.0	0.0	1.0	0.0	0.1	0.0	0.0	0.1	0.0	0.1	0.1	0.5	0.0	0.1	0.1
Code	94	95	96	97	98	99	100	TOTAL							
Frequency	10	39	4	8	23	23	2,125	9,229							
Percent	0.1	0.4	0.0	0.1	0.2	0.2	23.0	100.0							

ANALYSIS 20

VARIABLE	V20	MUN	OTHER	FUNDING												
Code	0	1	2	3	5	8	10	12	14	16	20	25	30	34	35	
Frequency	4,969	2	2	2	2	1	2	1	1	1	4	6	2	1	1	
Percent	53.8	0.0	0.0	0.0	0.0	0.0	0.0	0.0	0.0	0.0	0.0	0.1	0.0	0.0	0.0	
Code	40	45	48	50	51	55	56	59	60	65	66	68	70	71	72	
Frequency	1	1	1	28	1	2	1	2	2	4	1	1	9	2	1	
Percent	0.0	0.0	0.0	0.3	0.0	0.0	0.0	0.0	0.0	0.0	0.0	0.0	0.1	0.0	0.0	
Code	73	74	75	79	80	82	84	85	86	87	88	89	90	92	93	
Frequency	1	2	6	1	17	2	1	10	4	2	1	1	23	1	1	
Percent	0.0	0.0	0.1	0.0	0.2	0.0	0.0	0.1	0.0	0.0	0.0	0.0	0.2	0.0	0.0	
Code	94	95	96	97	98	99	100	TOTAL								
Frequency	2	9	2	3	8	7	4,071	9,229								
Percent	0.0	0.1	0.0	0.0	0.1	0.1	44.1	100.0								

ANALYSIS 21

VARIABLE	V21	TWP	OTHER	FUNDING											
Code	0	5	10	14	15	65	70	75	85	98	100	TOTAL			
Frequency	8,776	1	1	2	1	1	1	2	1	1	442	9,229			
Percent	95.1	0.0	0.0	0.0	0.0	0.0	0.0	0.0	0.0	0.0	4.8	100.0			

Code	139	143	144	145	147	157	158	163	164	166	167	170	172	174	176
Frequency	1	1	1	1	1	1	2	1	1	1	1	1	1	1	1
Percent	0.0	0.0	0.0	0.0	0.0	0.0	0.0	0.0	0.0	0.0	0.0	0.0	0.0	0.0	0.0
Code	183	185	194	196	202	203	204	207	210	211	226	233	236	238	241
Frequency	1	1	1	1	1	1	1	1	1	1	1	3	1	1	1
Percent	0.0	0.0	0.0	0.0	0.0	0.0	0.0	0.0	0.0	0.0	0.0	0.0	0.0	0.0	0.0
Code	247	252	262	269	274	287	289	290	295	318	330	358	363	392	408
Frequency	1	1	1	1	1	1	1	1	1	1	1	1	1	1	1
Percent	0.0	0.0	0.0	0.0	0.0	0.0	0.0	0.0	0.0	0.0	0.0	0.0	0.0	0.0	0.0
Code	414	436	480	534	636	704	711	1,073	1,877	2,649	TOTAL				
Frequency	1	1	1	1	1	1	1	1	1	1	9,229				
Percent	0.0	0.0	0.0	0.0	0.0	0.0	0.0	0.0	0.0	0.0	100.0				

ANALYSIS 24

VARIABLE	V24	ATTYS	FULLTIME EMPLYS													
Code	0	1	2	3	4	5	6	7	8	9	10	11	12	13	14	
Frequency	5,611	2,195	466	241	125	79	66	33	41	23	39	18	20	12	14	
Percent	60.8	23.8	5.0	2.6	1.4	0.9	0.7	0.4	0.4	0.2	0.4	0.2	0.2	0.1	0.2	
Code	15	16	17	18	19	20	21	22	23	24	25	26	27	28	29	
Frequency	12	11	9	14	5	14	3	11	7	6	6	7	6	3	3	
Percent	0.1	0.1	0.1	0.2	0.1	0.2	0.0	0.1	0.1	0.1	0.1	0.1	0.1	0.0	0.0	
Code	30	31	32	33	34	35	36	37	38	39	40	41	43	44	45	
Frequency	8	2	5	5	2	2	1	2	3	7	3	2	3	4	4	
Percent	0.1	0.0	0.1	0.1	0.0	0.0	0.0	0.0	0.0	0.1	0.0	0.0	0.0	0.0	0.0	
Code	46	48	53	55	56	57	58	60	63	65	66	68	70	71	72	
Frequency	2	2	3	3	1	2	1	2	1	1	1	1	3	2	3	
Percent	0.0	0.0	0.0	0.0	0.0	0.0	0.0	0.0	0.0	0.0	0.0	0.0	0.0	0.0	0.0	
Code	75	76	78	83	84	85	86	87	88	89	92	93	97	98	102	
Frequency	1	1	1	2	1	1	2	2	1	1	2	1	1	3	1	
Percent	0.0	0.0	0.0	0.0	0.0	0.0	0.0	0.0	0.0	0.0	0.0	0.0	0.0	0.0	0.0	
Code	103	105	106	114	118	119	121	123	130	138	146	153	160	162	165	
Frequency	1	1	1	1	1	1	2	1	1	1	1	1	1	1	1	
Percent	0.0	0.0	0.0	0.0	0.0	0.0	0.0	0.0	0.0	0.0	0.0	0.0	0.0	0.0	0.0	
Code	168	177	197	200	251	256	360	431	434	500	511	TOTAL				
Frequency	1	1	1	1	1	1	1	1	1	1	1	9,229				
Percent	0.0	0.0	0.0	0.0	0.0	0.0	0.0	0.0	0.0	0.0	0.0	100.0				

ANALYSIS 25

VARIABLE	V25	INVEST.	FULLTIME EMPLYS													
Code	0	1	2	3	4	5	6	7	8	9	10	11	12	13	14	
Frequency	8,359	467	121	58	45	23	23	17	11	6	6	3	11	4	7	
Percent	90.6	5.1	1.3	0.6	0.5	0.2	0.2	0.2	0.1	0.1	0.1	0.0	0.1	0.0	0.1	
Code	15	16	17	18	19	20	21	22	23	24	25	26	28	29	32	
Frequency	6	1	2	1	5	4	8	3	1	1	1	3	1	1	1	
Percent	0.1	0.0	0.0	0.0	0.1	0.0	0.1	0.0	0.0	0.0	0.0	0.0	0.0	0.0	0.0	
Code	34	35	36	37	46	50	52	55	58	60	63	64	67	68	71	
Frequency	1	3	2	1	1	2	1	1	1	2	1	1	1	2	2	
Percent	0.0	0.0	0.0	0.0	0.0	0.0	0.0	0.0	0.0	0.0	0.0	0.0	0.0	0.0	0.0	
Code	72	73	75	98	102	108	262	TOTAL								
Frequency	1	1	1	1	1	1	1	9,229								
Percent	0.0	0.0	0.0	0.0	0.0	0.0	0.0	100.0								

ANALYSIS 26

VARIABLE	V26	LEG SERV	FULLTIME EMPLYS													
Code	0	1	2	3	4	5	6	7	8	9	10	11	12	13	16	
Frequency	8,865	199	64	23	24	5	10	2	3	2	5	4	3	2	4	
Percent	96.1	2.2	0.7	0.2	0.3	0.1	0.1	0.0	0.0	0.0	0.1	0.0	0.0	0.0	0.0	
Code	19	21	22	23	25	30	31	35	49	87	TOTAL					
Frequency	1	3	2	1	2	1	1	1	1	1	9,229					
Percent	0.0	0.0	0.0	0.0	0.0	0.0	0.0	0.0	0.0	0.0	100.0					

ANALYSIS 27

VARIABLE	V27	ADM SUP	FULLTIME EMPLYS													
Code	0	1	2	3	4	5	6	7	8	9	10	11	12	13	14	
Frequency	8,753	297	69	36	19	15	7	1	2	3	5	2	3	1	1	
Percent	94.8	3.2	0.7	0.4	0.2	0.2	0.1	0.0	0.0	0.0	0.1	0.0	0.0	0.0	0.0	
Code	15	17	21	23	29	30	34	39	55	91	102	135	301	TOTAL		
Frequency	2	1	1	2	1	1	1	1	1	1	1	1	1	9,229	1	
Percent	0.0	0.0	0.0	0.0	0.0	0.0	0.0	0.0	0.0	0.0	0.0	0.0	0.0	100.0	0.0	

ANALYSIS 28

VARIABLE	V28	SEC CLER FULLTIME EMPLYS													
Code	0	1	2	3	4	5	6	7	8	9	10	11	12	13	14
Frequency	5,858	2,034	493	219	120	73	60	47	27	18	27	17	25	6	17
Percent	63.5	22.0	5.3	2.4	1.3	0.8	0.7	0.5	0.3	0.2	0.3	0.2	0.3	0.1	0.2
Code	15	16	17	18	19	20	21	22	23	24	25	26	27	28	29
Frequency	8	15	11	5	4	7	5	5	4	7	6	3	1	4	6
Percent	0.1	0.2	0.1	0.1	0.0	0.1	0.1	0.1	0.0	0.1	0.1	0.0	0.0	0.0	0.1
Code	30	31	32	33	34	35	36	37	38	39	40	41	42	44	45
Frequency	7	5	2	4	2	1	3	3	2	1	1	1	1	2	2
Percent	0.1	0.1	0.0	0.0	0.0	0.0	0.0	0.0	0.0	0.0	0.0	0.0	0.0	0.0	0.0
Code	47	48	49	50	51	52	53	55	56	58	59	60	61	65	68
Frequency	1	1	2	4	1	1	1	1	2	3	1	3	1	1	1
Percent	0.0	0.0	0.0	0.0	0.0	0.0	0.0	0.0	0.0	0.0	0.0	0.0	0.0	0.0	0.0
Code	70	72	73	74	75	76	77	88	90	94	95	100	110	112	121
Frequency	1	1	2	2	1	2	1	1	1	1	1	1	1	1	1
Percent	0.0	0.0	0.0	0.0	0.0	0.0	0.0	0.0	0.0	0.0	0.0	0.0	0.0	0.0	0.0
Code	131	132	133	140	147	149	159	165	177	179	195	196	200	224	412
Frequency	2	1	1	1	1	1	1	1	1	1	1	1	1	1	1
Percent	0.0	0.0	0.0	0.0	0.0	0.0	0.0	0.0	0.0	0.0	0.0	0.0	0.0	0.0	0.0
Code	792	2,194	TOTAL												
Frequency	1	1	9,229												
Percent	0.0	0.0	100.0												

ANALYSIS 29

VARIABLE	V29	OTHER	FULLTIME EMPLYS												
Code	0	1	2	3	4	5	6	7	9	12	14	15	16	18	19
Frequency	9,118	43	16	17	7	4	6	2	2	1	1	1	1	2	2
Percent	98.8	0.5	0.2	0.2	0.1	0.0	0.1	0.0	0.0	0.0	0.0	0.0	0.0	0.0	0.0
Code	21	23	24	39	52	TOTAL									
Frequency	1	1	1	1	1	9,229									
Percent	0.0	0.0	0.0	0.0	0.0	100.0									

ANALYSIS 30

VARIABLE	V30	TOTAL	PARTTIME EMPLYS													
Code	0	1	2	3	4	5	6	7	8	9	10	11	12	13	14	
Frequency	2,619	4,697	957	424	231	112	47	30	31	9	11	8	11	8	4	
Percent	28.4	50.9	10.4	4.6	2.5	1.2	0.5	0.3	0.3	0.1	0.1	0.1	0.1	0.1	0.0	
Code	15	16	17	18	19	20	22	23	25	26	27	30	33	36	37	
Frequency	4	4	3	1	2	3	1	1	1	1	1	1	1	1	1	
Percent	0.0	0.0	0.0	0.0	0.0	0.0	0.0	0.0	0.0	0.0	0.0	0.0	0.0	0.0	0.0	
Code	39	40	64	TOTAL												
Frequency	2	1	1	9,229												
Percent	0.0	0.0	0.0	100.0												

ANALYSIS 31

VARIABLE	V31	ATTYS	PARTTIME EMPLYS												
Code	0	1	2	3	4	5	6	7	8	9	10	11	12	13	15
Frequency	3,155	4,942	696	217	91	50	19	15	14	6	3	3	7	4	2
Percent	34.2	53.5	7.5	2.4	1.0	0.5	0.2	0.2	0.2	0.1	0.0	0.0	0.1	0.0	0.0
Code	16	17	20	32	39	TOTAL									
Frequency	1	1	1	1	1	9,229									
Percent	0.0	0.0	0.0	0.0	0.0	100.0									

ANALYSIS 32

VARIABLE	V32	INVEST.	PARTTIME EMPLYS			TOTAL
Code	0	1	2	3	TOTAL	
Frequency	9,119	98	10	2	9,229	
Percent	98.8	1.1	0.1	0.0	100.0	

ANALYSIS 33

VARIABLE	V33	LEG SER	PARTTIME EMPLYS													
Code	0	1	2	3	4	5	6	7	8	10	11	12	13	15	16	
Frequency	8,892	184	58	29	17	13	6	4	5	5	3	2	1	3	1	

ANALYSIS 38

VARIABLE	V38	ATTYS	SHARED EMPLOYEE										
Code	0	1	2	3	4	5	7	8	9	14	18	86	TOTAL
Frequency	9,098	93	18	8	3	1	3	1	1	1	1	1	9,229
Percent	98.6	1.0	0.2	0.1	0.0	0.0	0.0	0.0	0.0	0.0	0.0	0.0	100.0

ANALYSIS 39

VARIABLE	V39	INVEST.	SHARED EMPLOYEE							TOTAL
Code	0	1	2	3	4	5	8	18	31	TOTAL
Frequency	9,161	44	6	7	4	4	1	1	1	9,229
Percent	99.3	0.5	0.1	0.1	0.0	0.0	0.0	0.0	0.0	100.0

ANALYSIS 40

VARIABLE	V40	LEG SER	SHARED EMPLOYEE		TOTAL
Code	0	1	2	4	TOTAL
Frequency	9,208	17	3	1	9,229
Percent	99.8	0.2	0.0	0.0	100.0

ANALYSIS 41

VARIABLE	V41	ADM SUP	SHARE EMPLOYEE		TOTAL
Code	0	1	4		TOTAL
Frequency	9,218	10	1		9,229
Percent	99.9	0.1	0.0		100.0

ANALYSIS 42

VARIABLE	V42	SEC CLER	SHARE EMPLOYEE				TOTAL
Code	0	1	2	3	4	7	TOTAL
Frequency	9,021	164	31	6	6	1	9,229
Percent	97.7	1.8	0.3	0.1	0.1	0.0	100.0

ANALYSIS 43

VARIABLE	V43	OTHER	SHARE	EMPLOYEE	
Code	0	1	2	3	TOTAL
Frequency	9,218	9	1	1	9,229
Percent	99.9	0.1	0.0	0.0	100.0

ANALYSIS 44

VARIABLE	V44	COMPENSATION			
Code	1	2	3	4	TOTAL
Frequency	7,032	1,162	667	368	9,229
Percent	76.2	12.6	7.2	4.0	100.0

ANALYSIS 45

VARIABLE	V45	PRIVATE	
Code	1	2	TOTAL
Frequency	8,021	1,208	9,229
Percent	86.9	13.1	100.0

ANALYSIS 46

VARIABLE	V46	PRACTICE		
Code	1	2	3	TOTAL
Frequency	2,454	841	5,934	9,229
Percent	26.6	9.1	64.3	100.0

ANALYSIS 47

VARIABLE	V47	STATISTICS		
Code	1	2		TOTAL
Frequency	996	8,233		9,229
Percent	10.8	89.2		100.0

ANALYSIS 48

VARIABLE	V48	FUNDING									TOTAL
Code	0	1	2	3	4	5	6	7	8	9	
Frequency	38	9	227	2,045	5,392	46	285	642	264	281	9,229
Percent	0.4	0.1	2.5	22.2	58.4	0.5	3.1	7.0	2.9	3.0	100.0

ANALYSIS 49

VARIABLE	V49	IMPUTED PEC ?		TOTAL
Code	0	9		
Frequency	6,324	2,905		9,229
Percent	68.5	31.5		100.0

ANALYSIS 50

VARIABLE	V50	ICPSR STUDY NUMBER	
Code	7,674	TOTAL	
Frequency	9,229	9,229	
Percent	100.0	100.0	

ANALYSIS 51

VARIABLE	V51	VERSION NUMBER	
Code	1	TOTAL	
Frequency	9,229	9,229	
Percent	100.0	100.0	

ANALYSIS 52

VARIABLE	V52 ID NUMBER														
Code	1	2	3	4	5	6	7	8	9	10	11	12	13	14	15
Frequency	1	1	1	1	1	1	1	1	1	1	1	1	1	1	1
Percent	0.0	0.0	0.0	0.0	0.0	0.0	0.0	0.0	0.0	0.0	0.0	0.0	0.0	0.0	0.0
Code	16	17	18	19	20	21	22	23	24	25	26	27	28	29	30
Frequency	1	1	1	1	1	1	1	1	1	1	1	1	1	1	1
Percent	0.0	0.0	0.0	0.0	0.0	0.0	0.0	0.0	0.0	0.0	0.0	0.0	0.0	0.0	0.0
Code	31	32	33	34	35	36	37	38	39	40	41	42	43	44	45

CONTINUED

1 OF 2

Percent	0.0	0.0	0.0	0.0	0.0	0.0	0.0	0.0	0.0	0.0	0.0	0.0	0.0	0.0	0.0
Code	2,371	2,372	2,373	2,374	2,375	2,376	2,377	2,378	2,379	2,380	2,381	2,382	2,383	2,384	2,385
Frequency	1	1	1	1	1	1	1	1	1	1	1	1	1	1	1
Percent	0.0	0.0	0.0	0.0	0.0	0.0	0.0	0.0	0.0	0.0	0.0	0.0	0.0	0.0	0.0
Code	2,386	2,387	2,388	2,389	2,390	2,391	2,392	2,393	2,394	2,395	2,396	2,397	2,398	2,399	2,400
Frequency	1	1	1	1	1	1	1	1	1	1	1	1	1	1	1
Percent	0.0	0.0	0.0	0.0	0.0	0.0	0.0	0.0	0.0	0.0	0.0	0.0	0.0	0.0	0.0
Code	2,401	2,402	2,403	2,404	2,405	2,406	2,407	2,408	2,409	2,410	2,411	2,412	2,413	2,414	2,415
Frequency	1	1	1	1	1	1	1	1	1	1	1	1	1	1	1
Percent	0.0	0.0	0.0	0.0	0.0	0.0	0.0	0.0	0.0	0.0	0.0	0.0	0.0	0.0	0.0
Code	2,416	2,417	2,418	2,419	2,420	2,421	2,422	2,423	2,424	2,425	2,426	2,427	2,428	2,429	2,430
Frequency	1	1	1	1	1	1	1	1	1	1	1	1	1	1	1
Percent	0.0	0.0	0.0	0.0	0.0	0.0	0.0	0.0	0.0	0.0	0.0	0.0	0.0	0.0	0.0
Code	2,431	2,432	2,433	2,434	2,435	2,436	2,437	2,438	2,439	2,440	2,441	2,442	2,443	2,444	2,445
Frequency	1	1	1	1	1	1	1	1	1	1	1	1	1	1	1
Percent	0.0	0.0	0.0	0.0	0.0	0.0	0.0	0.0	0.0	0.0	0.0	0.0	0.0	0.0	0.0
Code	2,446	2,447	2,448	2,449	2,450	2,451	2,452	2,453	2,454	2,455	2,456	2,457	2,458	2,459	2,460
Frequency	1	1	1	1	1	1	1	1	1	1	1	1	1	1	1
Percent	0.0	0.0	0.0	0.0	0.0	0.0	0.0	0.0	0.0	0.0	0.0	0.0	0.0	0.0	0.0
Code	2,461	2,462	2,463	2,464	2,465	2,466	2,467	2,468	2,469	2,470	2,471	2,472	2,473	2,474	2,475
Frequency	1	1	1	1	1	1	1	1	1	1	1	1	1	1	1
Percent	0.0	0.0	0.0	0.0	0.0	0.0	0.0	0.0	0.0	0.0	0.0	0.0	0.0	0.0	0.0
Code	2,476	2,477	2,478	2,479	2,480	2,481	2,482	2,483	2,484	2,485	2,486	2,487	2,488	2,489	2,490
Frequency	1	1	1	1	1	1	1	1	1	1	1	1	1	1	1
Percent	0.0	0.0	0.0	0.0	0.0	0.0	0.0	0.0	0.0	0.0	0.0	0.0	0.0	0.0	0.0
Code	2,491	2,492	2,493	2,494	2,495	2,496	2,497	2,498	2,499	2,500	2,501	2,502	2,503	2,504	2,505
Frequency	1	1	1	1	1	1	1	1	1	1	1	1	1	1	1
Percent	0.0	0.0	0.0	0.0	0.0	0.0	0.0	0.0	0.0	0.0	0.0	0.0	0.0	0.0	0.0
Code	2,506	2,507	2,508	2,509	2,510	2,511	2,512	2,513	2,514	2,515	2,516	2,517	2,518	2,519	2,520
Frequency	1	1	1	1	1	1	1	1	1	1	1	1	1	1	1
Percent	0.0	0.0	0.0	0.0	0.0	0.0	0.0	0.0	0.0	0.0	0.0	0.0	0.0	0.0	0.0
Code	2,521	2,522	2,523	2,524	2,525	2,526	2,527	2,528	2,529	2,530	2,531	2,532	2,533	2,534	2,535
Frequency	1	1	1	1	1	1	1	1	1	1	1	1	1	1	1
Percent	0.0	0.0	0.0	0.0	0.0	0.0	0.0	0.0	0.0	0.0	0.0	0.0	0.0	0.0	0.0
Code	2,536	2,537	2,538	2,539	2,540	2,541	2,542	2,543	2,544	2,545	2,546	2,547	2,548	2,549	2,550

Frequency Percent	1 0.0	1 0.0	1 0.0	1 0.0	1 0.0	1 0.0	1 0.0	1 0.0	1 0.0	1 0.0	1 0.0	1 0.0	1 0.0	1 0.0	1 0.0
Code Frequency Percent	2,551 1 0.0	2,552 1 0.0	2,553 1 0.0	2,554 1 0.0	2,555 1 0.0	2,556 1 0.0	2,557 1 0.0	2,558 1 0.0	2,559 1 0.0	2,560 1 0.0	2,561 1 0.0	2,562 1 0.0	2,563 1 0.0	2,564 1 0.0	2,565 1 0.0
Code Frequency Percent	2,566 1 0.0	2,567 1 0.0	2,568 1 0.0	2,569 1 0.0	2,570 1 0.0	2,571 1 0.0	2,572 1 0.0	2,573 1 0.0	2,574 1 0.0	2,575 1 0.0	2,576 1 0.0	2,577 1 0.0	2,578 1 0.0	2,579 1 0.0	2,580 1 0.0
Code Frequency Percent	2,581 1 0.0	2,582 1 0.0	2,583 1 0.0	2,584 1 0.0	2,585 1 0.0	2,586 1 0.0	2,587 1 0.0	2,588 1 0.0	2,589 1 0.0	2,590 1 0.0	2,591 1 0.0	2,592 1 0.0	2,593 1 0.0	2,594 1 0.0	2,595 1 0.0
Code Frequency Percent	2,596 1 0.0	2,597 1 0.0	2,598 1 0.0	2,599 1 0.0	2,600 1 0.0	2,601 1 0.0	2,602 1 0.0	2,603 1 0.0	2,604 1 0.0	2,605 1 0.0	2,606 1 0.0	2,607 1 0.0	2,608 1 0.0	2,609 1 0.0	2,610 1 0.0
Code Frequency Percent	2,611 1 0.0	2,612 1 0.0	2,613 1 0.0	2,614 1 0.0	2,615 1 0.0	2,616 1 0.0	2,617 1 0.0	2,618 1 0.0	2,619 1 0.0	2,620 1 0.0	2,621 1 0.0	2,622 1 0.0	2,623 1 0.0	2,624 1 0.0	2,625 1 0.0
Code Frequency Percent	2,626 1 0.0	2,627 1 0.0	2,628 1 0.0	2,629 1 0.0	2,630 1 0.0	2,631 1 0.0	2,632 1 0.0	2,633 1 0.0	2,634 1 0.0	2,635 1 0.0	2,636 1 0.0	2,637 1 0.0	2,638 1 0.0	2,639 1 0.0	2,640 1 0.0
Code Frequency Percent	2,641 1 0.0	2,642 1 0.0	2,643 1 0.0	2,644 1 0.0	2,645 1 0.0	2,646 1 0.0	2,647 1 0.0	2,648 1 0.0	2,649 1 0.0	2,650 1 0.0	2,651 1 0.0	2,652 1 0.0	2,653 1 0.0	2,654 1 0.0	2,655 1 0.0
Code Frequency Percent	2,656 1 0.0	2,657 1 0.0	2,658 1 0.0	2,659 1 0.0	2,660 1 0.0	2,661 1 0.0	2,662 1 0.0	2,663 1 0.0	2,664 1 0.0	2,665 1 0.0	2,666 1 0.0	2,667 1 0.0	2,668 1 0.0	2,669 1 0.0	2,670 1 0.0
Code Frequency Percent	2,671 1 0.0	2,672 1 0.0	2,673 1 0.0	2,674 1 0.0	2,675 1 0.0	2,676 1 0.0	2,677 1 0.0	2,678 1 0.0	2,679 1 0.0	2,680 1 0.0	2,681 1 0.0	2,682 1 0.0	2,683 1 0.0	2,684 1 0.0	2,685 1 0.0
Code Frequency Percent	2,686 1 0.0	2,687 1 0.0	2,688 1 0.0	2,689 1 0.0	2,690 1 0.0	2,691 1 0.0	2,692 1 0.0	2,693 1 0.0	2,694 1 0.0	2,695 1 0.0	2,696 1 0.0	2,697 1 0.0	2,698 1 0.0	2,699 1 0.0	2,700 1 0.0
Code Frequency Percent	2,701 1 0.0	2,702 1 0.0	2,703 1 0.0	2,704 1 0.0	2,705 1 0.0	2,706 1 0.0	2,707 1 0.0	2,708 1 0.0	2,709 1 0.0	2,710 1 0.0	2,711 1 0.0	2,712 1 0.0	2,713 1 0.0	2,714 1 0.0	2,715 1 0.0

Percent	0.0	0.0	0.0	0.0	0.0	0.0	0.0	0.0	0.0	0.0	0.0	0.0	0.0	0.0	0.0
Code	4,516	4,517	4,518	4,519	4,520	4,521	4,522	4,523	4,524	4,525	4,526	4,527	4,528	4,529	4,530
Frequency	1	1	1	1	1	1	1	1	1	1	1	1	1	1	1
Percent	0.0	0.0	0.0	0.0	0.0	0.0	0.0	0.0	0.0	0.0	0.0	0.0	0.0	0.0	0.0
Code	4,531	4,532	4,533	4,534	4,535	4,536	4,537	4,538	4,539	4,540	4,541	4,542	4,543	4,544	4,545
Frequency	1	1	1	1	1	1	1	1	1	1	1	1	1	1	1
Percent	0.0	0.0	0.0	0.0	0.0	0.0	0.0	0.0	0.0	0.0	0.0	0.0	0.0	0.0	0.0
Code	4,546	4,547	4,548	4,549	4,550	4,551	4,552	4,553	4,554	4,555	4,556	4,557	4,558	4,559	4,560
Frequency	1	1	1	1	1	1	1	1	1	1	1	1	1	1	1
Percent	0.0	0.0	0.0	0.0	0.0	0.0	0.0	0.0	0.0	0.0	0.0	0.0	0.0	0.0	0.0
Code	4,561	4,562	4,563	4,564	4,565	4,566	4,567	4,568	4,569	4,570	4,571	4,572	4,573	4,574	4,575
Frequency	1	1	1	1	1	1	1	1	1	1	1	1	1	1	1
Percent	0.0	0.0	0.0	0.0	0.0	0.0	0.0	0.0	0.0	0.0	0.0	0.0	0.0	0.0	0.0
Code	4,576	4,577	4,578	4,579	4,580	4,581	4,582	4,583	4,584	4,585	4,586	4,587	4,588	4,589	4,590
Frequency	1	1	1	1	1	1	1	1	1	1	1	1	1	1	1
Percent	0.0	0.0	0.0	0.0	0.0	0.0	0.0	0.0	0.0	0.0	0.0	0.0	0.0	0.0	0.0
Code	4,591	4,592	4,593	4,594	4,595	4,596	4,597	4,598	4,599	4,600	4,601	4,602	4,603	4,604	4,605
Frequency	1	1	1	1	1	1	1	1	1	1	1	1	1	1	1
Percent	0.0	0.0	0.0	0.0	0.0	0.0	0.0	0.0	0.0	0.0	0.0	0.0	0.0	0.0	0.0
Code	4,606	4,607	4,608	4,609	4,610	4,611	4,612	4,613	4,614	4,615	4,616	4,617	4,618	4,619	4,620
Frequency	1	1	1	1	1	1	1	1	1	1	1	1	1	1	1
Percent	0.0	0.0	0.0	0.0	0.0	0.0	0.0	0.0	0.0	0.0	0.0	0.0	0.0	0.0	0.0
Code	4,621	4,622	4,623	4,624	4,625	4,626	4,627	4,628	4,629	4,630	4,631	4,632	4,633	4,634	4,635
Frequency	1	1	1	1	1	1	1	1	1	1	1	1	1	1	1
Percent	0.0	0.0	0.0	0.0	0.0	0.0	0.0	0.0	0.0	0.0	0.0	0.0	0.0	0.0	0.0
Code	4,636	4,637	4,638	4,639	4,640	4,641	4,642	4,643	4,644	4,645	4,646	4,647	4,648	4,649	4,650
Frequency	1	1	1	1	1	1	1	1	1	1	1	1	1	1	1
Percent	0.0	0.0	0.0	0.0	0.0	0.0	0.0	0.0	0.0	0.0	0.0	0.0	0.0	0.0	0.0
Code	4,651	4,652	4,653	4,654	4,655	4,656	4,657	4,658	4,659	4,660	4,661	4,662	4,663	4,664	4,665
Frequency	1	1	1	1	1	1	1	1	1	1	1	1	1	1	1
Percent	0.0	0.0	0.0	0.0	0.0	0.0	0.0	0.0	0.0	0.0	0.0	0.0	0.0	0.0	0.0
Code	4,666	4,667	4,668	4,669	4,670	4,671	4,672	4,673	4,674	4,675	4,676	4,677	4,678	4,679	4,680
Frequency	1	1	1	1	1	1	1	1	1	1	1	1	1	1	1
Percent	0.0	0.0	0.0	0.0	0.0	0.0	0.0	0.0	0.0	0.0	0.0	0.0	0.0	0.0	0.0
Code	4,681	4,682	4,683	4,684	4,685	4,686	4,687	4,688	4,689	4,690	4,691	4,692	4,693	4,694	4,695

Frequency Percent	1 0.0	1 0.0	1 0.0	1 0.0	1 0.0	1 0.0	1 0.0	1 0.0	1 0.0	1 0.0	1 0.0	1 0.0	1 0.0	1 0.0	1 0.0
Code Frequency Percent	4,696 1 0.0	4,697 1 0.0	4,698 1 0.0	4,699 1 0.0	4,700 1 0.0	4,701 1 0.0	4,702 1 0.0	4,703 1 0.0	4,704 1 0.0	4,705 1 0.0	4,706 1 0.0	4,707 1 0.0	4,708 1 0.0	4,709 1 0.0	4,710 1 0.0
Code Frequency Percent	4,711 1 0.0	4,712 1 0.0	4,713 1 0.0	4,714 1 0.0	4,715 1 0.0	4,716 1 0.0	4,717 1 0.0	4,718 1 0.0	4,719 1 0.0	4,720 1 0.0	4,721 1 0.0	4,722 1 0.0	4,723 1 0.0	4,724 1 0.0	4,725 1 0.0
Code Frequency Percent	4,726 1 0.0	4,727 1 0.0	4,728 1 0.0	4,729 1 0.0	4,730 1 0.0	4,731 1 0.0	4,732 1 0.0	4,733 1 0.0	4,734 1 0.0	4,735 1 0.0	4,736 1 0.0	4,737 1 0.0	4,738 1 0.0	4,739 1 0.0	4,740 1 0.0
Code Frequency Percent	4,741 1 0.0	4,742 1 0.0	4,743 1 0.0	4,744 1 0.0	4,745 1 0.0	4,746 1 0.0	4,747 1 0.0	4,748 1 0.0	4,749 1 0.0	4,750 1 0.0	4,751 1 0.0	4,752 1 0.0	4,753 1 0.0	4,754 1 0.0	4,755 1 0.0
Code Frequency Percent	4,756 1 0.0	4,757 1 0.0	4,758 1 0.0	4,759 1 0.0	4,760 1 0.0	4,761 1 0.0	4,762 1 0.0	4,763 1 0.0	4,764 1 0.0	4,765 1 0.0	4,766 1 0.0	4,767 1 0.0	4,768 1 0.0	4,769 1 0.0	4,770 1 0.0
Code Frequency Percent	4,771 1 0.0	4,772 1 0.0	4,773 1 0.0	4,774 1 0.0	4,775 1 0.0	4,776 1 0.0	4,777 1 0.0	4,778 1 0.0	4,779 1 0.0	4,780 1 0.0	4,781 1 0.0	4,782 1 0.0	4,783 1 0.0	4,784 1 0.0	4,785 1 0.0
Code Frequency Percent	4,786 1 0.0	4,787 1 0.0	4,788 1 0.0	4,789 1 0.0	4,790 1 0.0	4,791 1 0.0	4,792 1 0.0	4,793 1 0.0	4,794 1 0.0	4,795 1 0.0	4,796 1 0.0	4,797 1 0.0	4,798 1 0.0	4,799 1 0.0	4,800 1 0.0
Code Frequency Percent	4,801 1 0.0	4,802 1 0.0	4,803 1 0.0	4,804 1 0.0	4,805 1 0.0	4,806 1 0.0	4,807 1 0.0	4,808 1 0.0	4,809 1 0.0	4,810 1 0.0	4,811 1 0.0	4,812 1 0.0	4,813 1 0.0	4,814 1 0.0	4,815 1 0.0
Code Frequency Percent	4,816 1 0.0	4,817 1 0.0	4,818 1 0.0	4,819 1 0.0	4,820 1 0.0	4,821 1 0.0	4,822 1 0.0	4,823 1 0.0	4,824 1 0.0	4,825 1 0.0	4,826 1 0.0	4,827 1 0.0	4,828 1 0.0	4,829 1 0.0	4,830 1 0.0
Code Frequency Percent	4,831 1 0.0	4,832 1 0.0	4,833 1 0.0	4,834 1 0.0	4,835 1 0.0	4,836 1 0.0	4,837 1 0.0	4,838 1 0.0	4,839 1 0.0	4,840 1 0.0	4,841 1 0.0	4,842 1 0.0	4,843 1 0.0	4,844 1 0.0	4,845 1 0.0
Code Frequency Percent	4,846 1 0.0	4,847 1 0.0	4,848 1 0.0	4,849 1 0.0	4,850 1 0.0	4,851 1 0.0	4,852 1 0.0	4,853 1 0.0	4,854 1 0.0	4,855 1 0.0	4,856 1 0.0	4,857 1 0.0	4,858 1 0.0	4,859 1 0.0	4,860 1 0.0

Code Frequency Percent	5,221 1 0.0	5,222 1 0.0	5,223 1 0.0	5,224 1 0.0	5,225 1 0.0	5,226 1 0.0	5,227 1 0.0	5,228 1 0.0	5,229 1 0.0	5,230 1 0.0	5,231 1 0.0	5,232 1 0.0	5,233 1 0.0	5,234 1 0.0	5,235 1 0.0
Code Frequency Percent	5,236 1 0.0	5,237 1 0.0	5,238 1 0.0	5,239 1 0.0	5,240 1 0.0	5,241 1 0.0	5,242 1 0.0	5,243 1 0.0	5,244 1 0.0	5,245 1 0.0	5,246 1 0.0	5,247 1 0.0	5,248 1 0.0	5,249 1 0.0	5,250 1 0.0
Code Frequency Percent	5,251 1 0.0	5,252 1 0.0	5,253 1 0.0	5,254 1 0.0	5,255 1 0.0	5,256 1 0.0	5,257 1 0.0	5,258 1 0.0	5,259 1 0.0	5,260 1 0.0	5,261 1 0.0	5,262 1 0.0	5,263 1 0.0	5,264 1 0.0	5,265 1 0.0
Code Frequency Percent	5,266 1 0.0	5,267 1 0.0	5,268 1 0.0	5,269 1 0.0	5,270 1 0.0	5,271 1 0.0	5,272 1 0.0	5,273 1 0.0	5,274 1 0.0	5,275 1 0.0	5,276 1 0.0	5,277 1 0.0	5,278 1 0.0	5,279 1 0.0	5,280 1 0.0
Code Frequency Percent	5,281 1 0.0	5,282 1 0.0	5,283 1 0.0	5,284 1 0.0	5,285 1 0.0	5,286 1 0.0	5,287 1 0.0	5,288 1 0.0	5,289 1 0.0	5,290 1 0.0	5,291 1 0.0	5,292 1 0.0	5,293 1 0.0	5,294 1 0.0	5,295 1 0.0
Code Frequency Percent	5,296 1 0.0	5,297 1 0.0	5,298 1 0.0	5,299 1 0.0	5,300 1 0.0	5,301 1 0.0	5,302 1 0.0	5,303 1 0.0	5,304 1 0.0	5,305 1 0.0	5,306 1 0.0	5,307 1 0.0	5,308 1 0.0	5,309 1 0.0	5,310 1 0.0
Code Frequency Percent	5,311 1 0.0	5,312 1 0.0	5,313 1 0.0	5,314 1 0.0	5,315 1 0.0	5,316 1 0.0	5,317 1 0.0	5,318 1 0.0	5,319 1 0.0	5,320 1 0.0	5,321 1 0.0	5,322 1 0.0	5,323 1 0.0	5,324 1 0.0	5,325 1 0.0
Code Frequency Percent	5,326 1 0.0	5,327 1 0.0	5,328 1 0.0	5,329 1 0.0	5,330 1 0.0	5,331 1 0.0	5,332 1 0.0	5,333 1 0.0	5,334 1 0.0	5,335 1 0.0	5,336 1 0.0	5,337 1 0.0	5,338 1 0.0	5,339 1 0.0	5,340 1 0.0
Code Frequency Percent	5,341 1 0.0	5,342 1 0.0	5,343 1 0.0	5,344 1 0.0	5,345 1 0.0	5,346 1 0.0	5,347 1 0.0	5,348 1 0.0	5,349 1 0.0	5,350 1 0.0	5,351 1 0.0	5,352 1 0.0	5,353 1 0.0	5,354 1 0.0	5,355 1 0.0
Code Frequency Percent	5,356 1 0.0	5,357 1 0.0	5,358 1 0.0	5,359 1 0.0	5,360 1 0.0	5,361 1 0.0	5,362 1 0.0	5,363 1 0.0	5,364 1 0.0	5,365 1 0.0	5,366 1 0.0	5,367 1 0.0	5,368 1 0.0	5,369 1 0.0	5,370 1 0.0
Code Frequency Percent	5,371 1 0.0	5,372 1 0.0	5,373 1 0.0	5,374 1 0.0	5,375 1 0.0	5,376 1 0.0	5,377 1 0.0	5,378 1 0.0	5,379 1 0.0	5,380 1 0.0	5,381 1 0.0	5,382 1 0.0	5,383 1 0.0	5,384 1 0.0	5,385 1 0.0
Code Frequency Percent	5,386 1 0.0	5,387 1 0.0	5,388 1 0.0	5,389 1 0.0	5,390 1 0.0	5,391 1 0.0	5,392 1 0.0	5,393 1 0.0	5,394 1 0.0	5,395 1 0.0	5,396 1 0.0	5,397 1 0.0	5,398 1 0.0	5,399 1 0.0	5,400 1 0.0

Percent	0.0	0.0	0.0	0.0	0.0	0.0	0.0	0.0	0.0	0.0	0.0	0.0	0.0	0.0	0.0
Code	6,661	6,662	6,663	6,664	6,665	6,666	6,667	6,668	6,669	6,670	6,671	6,672	6,673	6,674	6,675
Frequency	1	1	1	1	1	1	1	1	1	1	1	1	1	1	1
Percent	0.0	0.0	0.0	0.0	0.0	0.0	0.0	0.0	0.0	0.0	0.0	0.0	0.0	0.0	0.0
Code	6,676	6,677	6,678	6,679	6,680	6,681	6,682	6,683	6,684	6,685	6,686	6,687	6,688	6,689	6,690
Frequency	1	1	1	1	1	1	1	1	1	1	1	1	1	1	1
Percent	0.0	0.0	0.0	0.0	0.0	0.0	0.0	0.0	0.0	0.0	0.0	0.0	0.0	0.0	0.0
Code	6,691	6,692	6,693	6,694	6,695	6,696	6,697	6,698	6,699	6,700	6,701	6,702	6,703	6,704	6,705
Frequency	1	1	1	1	1	1	1	1	1	1	1	1	1	1	1
Percent	0.0	0.0	0.0	0.0	0.0	0.0	0.0	0.0	0.0	0.0	0.0	0.0	0.0	0.0	0.0
Code	6,706	6,707	6,708	6,709	6,710	6,711	6,712	6,713	6,714	6,715	6,716	6,717	6,718	6,719	6,720
Frequency	1	1	1	1	1	1	1	1	1	1	1	1	1	1	1
Percent	0.0	0.0	0.0	0.0	0.0	0.0	0.0	0.0	0.0	0.0	0.0	0.0	0.0	0.0	0.0
Code	6,721	6,722	6,723	6,724	6,725	6,726	6,727	6,728	6,729	6,730	6,731	6,732	6,733	6,734	6,735
Frequency	1	1	1	1	1	1	1	1	1	1	1	1	1	1	1
Percent	0.0	0.0	0.0	0.0	0.0	0.0	0.0	0.0	0.0	0.0	0.0	0.0	0.0	0.0	0.0
Code	6,736	6,737	6,738	6,739	6,740	6,741	6,742	6,743	6,744	6,745	6,746	6,747	6,748	6,749	6,750
Frequency	1	1	1	1	1	1	1	1	1	1	1	1	1	1	1
Percent	0.0	0.0	0.0	0.0	0.0	0.0	0.0	0.0	0.0	0.0	0.0	0.0	0.0	0.0	0.0
Code	6,751	6,752	6,753	6,754	6,755	6,756	6,757	6,758	6,759	6,760	6,761	6,762	6,763	6,764	6,765
Frequency	1	1	1	1	1	1	1	1	1	1	1	1	1	1	1
Percent	0.0	0.0	0.0	0.0	0.0	0.0	0.0	0.0	0.0	0.0	0.0	0.0	0.0	0.0	0.0
Code	6,766	6,767	6,768	6,769	6,770	6,771	6,772	6,773	6,774	6,775	6,776	6,777	6,778	6,779	6,780
Frequency	1	1	1	1	1	1	1	1	1	1	1	1	1	1	1
Percent	0.0	0.0	0.0	0.0	0.0	0.0	0.0	0.0	0.0	0.0	0.0	0.0	0.0	0.0	0.0
Code	6,781	6,782	6,783	6,784	6,785	6,786	6,787	6,788	6,789	6,790	6,791	6,792	6,793	6,794	6,795
Frequency	1	1	1	1	1	1	1	1	1	1	1	1	1	1	1
Percent	0.0	0.0	0.0	0.0	0.0	0.0	0.0	0.0	0.0	0.0	0.0	0.0	0.0	0.0	0.0
Code	6,796	6,797	6,798	6,799	6,800	6,801	6,802	6,803	6,804	6,805	6,806	6,807	6,808	6,809	6,810
Frequency	1	1	1	1	1	1	1	1	1	1	1	1	1	1	1
Percent	0.0	0.0	0.0	0.0	0.0	0.0	0.0	0.0	0.0	0.0	0.0	0.0	0.0	0.0	0.0
Code	6,811	6,812	6,813	6,814	6,815	6,816	6,817	6,818	6,819	6,820	6,821	6,822	6,823	6,824	6,825
Frequency	1	1	1	1	1	1	1	1	1	1	1	1	1	1	1
Percent	0.0	0.0	0.0	0.0	0.0	0.0	0.0	0.0	0.0	0.0	0.0	0.0	0.0	0.0	0.0
Code	6,826	6,827	6,828	6,829	6,830	6,831	6,832	6,833	6,834	6,835	6,836	6,837	6,838	6,839	6,840

Code Frequency Percent	7,186 1 0.0	7,187 1 0.0	7,188 1 0.0	7,189 1 0.0	7,190 1 0.0	7,191 1 0.0	7,192 1 0.0	7,193 1 0.0	7,194 1 0.0	7,195 1 0.0	7,196 1 0.0	7,197 1 0.0	7,198 1 0.0	7,199 1 0.0	7,200 1 0.0
Code Frequency Percent	7,201 1 0.0	7,202 1 0.0	7,203 1 0.0	7,204 1 0.0	7,205 1 0.0	7,206 1 0.0	7,207 1 0.0	7,208 1 0.0	7,209 1 0.0	7,210 1 0.0	7,211 1 0.0	7,212 1 0.0	7,213 1 0.0	7,214 1 0.0	7,215 1 0.0
Code Frequency Percent	7,216 1 0.0	7,217 1 0.0	7,218 1 0.0	7,219 1 0.0	7,220 1 0.0	7,221 1 0.0	7,222 1 0.0	7,223 1 0.0	7,224 1 0.0	7,225 1 0.0	7,226 1 0.0	7,227 1 0.0	7,228 1 0.0	7,229 1 0.0	7,230 1 0.0
Code Frequency Percent	7,231 1 0.0	7,232 1 0.0	7,233 1 0.0	7,234 1 0.0	7,235 1 0.0	7,236 1 0.0	7,237 1 0.0	7,238 1 0.0	7,239 1 0.0	7,240 1 0.0	7,241 1 0.0	7,242 1 0.0	7,243 1 0.0	7,244 1 0.0	7,245 1 0.0
Code Frequency Percent	7,246 1 0.0	7,247 1 0.0	7,248 1 0.0	7,249 1 0.0	7,250 1 0.0	7,251 1 0.0	7,252 1 0.0	7,253 1 0.0	7,254 1 0.0	7,255 1 0.0	7,256 1 0.0	7,257 1 0.0	7,258 1 0.0	7,259 1 0.0	7,260 1 0.0
Code Frequency Percent	7,261 1 0.0	7,262 1 0.0	7,263 1 0.0	7,264 1 0.0	7,265 1 0.0	7,266 1 0.0	7,267 1 0.0	7,268 1 0.0	7,269 1 0.0	7,270 1 0.0	7,271 1 0.0	7,272 1 0.0	7,273 1 0.0	7,274 1 0.0	7,275 1 0.0
Code Frequency Percent	7,276 1 0.0	7,277 1 0.0	7,278 1 0.0	7,279 1 0.0	7,280 1 0.0	7,281 1 0.0	7,282 1 0.0	7,283 1 0.0	7,284 1 0.0	7,285 1 0.0	7,286 1 0.0	7,287 1 0.0	7,288 1 0.0	7,289 1 0.0	7,290 1 0.0
Code Frequency Percent	7,291 1 0.0	7,292 1 0.0	7,293 1 0.0	7,294 1 0.0	7,295 1 0.0	7,296 1 0.0	7,297 1 0.0	7,298 1 0.0	7,299 1 0.0	7,300 1 0.0	7,301 1 0.0	7,302 1 0.0	7,303 1 0.0	7,304 1 0.0	7,305 1 0.0
Code Frequency Percent	7,306 1 0.0	7,307 1 0.0	7,308 1 0.0	7,309 1 0.0	7,310 1 0.0	7,311 1 0.0	7,312 1 0.0	7,313 1 0.0	7,314 1 0.0	7,315 1 0.0	7,316 1 0.0	7,317 1 0.0	7,318 1 0.0	7,319 1 0.0	7,320 1 0.0
Code Frequency Percent	7,321 1 0.0	7,322 1 0.0	7,323 1 0.0	7,324 1 0.0	7,325 1 0.0	7,326 1 0.0	7,327 1 0.0	7,328 1 0.0	7,329 1 0.0	7,330 1 0.0	7,331 1 0.0	7,332 1 0.0	7,333 1 0.0	7,334 1 0.0	7,335 1 0.0
Code Frequency Percent	7,336 1 0.0	7,337 1 0.0	7,338 1 0.0	7,339 1 0.0	7,340 1 0.0	7,341 1 0.0	7,342 1 0.0	7,343 1 0.0	7,344 1 0.0	7,345 1 0.0	7,346 1 0.0	7,347 1 0.0	7,348 1 0.0	7,349 1 0.0	7,350 1 0.0
Code Frequency Percent	7,351 1 0.0	7,352 1 0.0	7,353 1 0.0	7,354 1 0.0	7,355 1 0.0	7,356 1 0.0	7,357 1 0.0	7,358 1 0.0	7,359 1 0.0	7,360 1 0.0	7,361 1 0.0	7,362 1 0.0	7,363 1 0.0	7,364 1 0.0	7,365 1 0.0

Code Frequency Percent	8,086 1 0.0	8,087 1 0.0	8,088 1 0.0	8,089 1 0.0	8,090 1 0.0	8,091 1 0.0	8,092 1 0.0	8,093 1 0.0	8,094 1 0.0	8,095 1 0.0	8,096 1 0.0	8,097 1 0.0	8,098 1 0.0	8,099 1 0.0	8,100 1 0.0
Code Frequency Percent	8,101 1 0.0	8,102 1 0.0	8,103 1 0.0	8,104 1 0.0	8,105 1 0.0	8,106 1 0.0	8,107 1 0.0	8,108 1 0.0	8,109 1 0.0	8,110 1 0.0	8,111 1 0.0	8,112 1 0.0	8,113 1 0.0	8,114 1 0.0	8,115 1 0.0
Code Frequency Percent	8,116 1 0.0	8,117 1 0.0	8,118 1 0.0	8,119 1 0.0	8,120 1 0.0	8,121 1 0.0	8,122 1 0.0	8,123 1 0.0	8,124 1 0.0	8,125 1 0.0	8,126 1 0.0	8,127 1 0.0	8,128 1 0.0	8,129 1 0.0	8,130 1 0.0
Code Frequency Percent	8,131 1 0.0	8,132 1 0.0	8,133 1 0.0	8,134 1 0.0	8,135 1 0.0	8,136 1 0.0	8,137 1 0.0	8,138 1 0.0	8,139 1 0.0	8,140 1 0.0	8,141 1 0.0	8,142 1 0.0	8,143 1 0.0	8,144 1 0.0	8,145 1 0.0
Code Frequency Percent	8,146 1 0.0	8,147 1 0.0	8,148 1 0.0	8,149 1 0.0	8,150 1 0.0	8,151 1 0.0	8,152 1 0.0	8,153 1 0.0	8,154 1 0.0	8,155 1 0.0	8,156 1 0.0	8,157 1 0.0	8,158 1 0.0	8,159 1 0.0	8,160 1 0.0
Code Frequency Percent	8,161 1 0.0	8,162 1 0.0	8,163 1 0.0	8,164 1 0.0	8,165 1 0.0	8,166 1 0.0	8,167 1 0.0	8,168 1 0.0	8,169 1 0.0	8,170 1 0.0	8,171 1 0.0	8,172 1 0.0	8,173 1 0.0	8,174 1 0.0	8,175 1 0.0
Code Frequency Percent	8,176 1 0.0	8,177 1 0.0	8,178 1 0.0	8,179 1 0.0	8,180 1 0.0	8,181 1 0.0	8,182 1 0.0	8,183 1 0.0	8,184 1 0.0	8,185 1 0.0	8,186 1 0.0	8,187 1 0.0	8,188 1 0.0	8,189 1 0.0	8,190 1 0.0
Code Frequency Percent	8,191 1 0.0	8,192 1 0.0	8,193 1 0.0	8,194 1 0.0	8,195 1 0.0	8,196 1 0.0	8,197 1 0.0	8,198 1 0.0	8,199 1 0.0	8,200 1 0.0	8,201 1 0.0	8,202 1 0.0	8,203 1 0.0	8,204 1 0.0	8,205 1 0.0
Code Frequency Percent	8,206 1 0.0	8,207 1 0.0	8,208 1 0.0	8,209 1 0.0	8,210 1 0.0	8,211 1 0.0	8,212 1 0.0	8,213 1 0.0	8,214 1 0.0	8,215 1 0.0	8,216 1 0.0	8,217 1 0.0	8,218 1 0.0	8,219 1 0.0	8,220 1 0.0
Code Frequency Percent	8,221 1 0.0	8,222 1 0.0	8,223 1 0.0	8,224 1 0.0	8,225 1 0.0	8,226 1 0.0	8,227 1 0.0	8,228 1 0.0	8,229 1 0.0	8,230 1 0.0	8,231 1 0.0	8,232 1 0.0	8,233 1 0.0	8,234 1 0.0	8,235 1 0.0
Code Frequency Percent	8,236 1 0.0	8,237 1 0.0	8,238 1 0.0	8,239 1 0.0	8,240 1 0.0	8,241 1 0.0	8,242 1 0.0	8,243 1 0.0	8,244 1 0.0	8,245 1 0.0	8,246 1 0.0	8,247 1 0.0	8,248 1 0.0	8,249 1 0.0	8,250 1 0.0
Code Frequency Percent	8,251 1 0.0	8,252 1 0.0	8,253 1 0.0	8,254 1 0.0	8,255 1 0.0	8,256 1 0.0	8,257 1 0.0	8,258 1 0.0	8,259 1 0.0	8,260 1 0.0	8,261 1 0.0	8,262 1 0.0	8,263 1 0.0	8,264 1 0.0	8,265 1 0.0

Percent	0.0	0.0	0.0	0.0	0.0	0.0	0.0	0.0	0.0	0.0	0.0	0.0	0.0	0.0	0.0
Code	8,806	8,807	8,808	8,809	8,810	8,811	8,812	8,813	8,814	8,815	8,816	8,817	8,818	8,819	8,820
Frequency	1	1	1	1	1	1	1	1	1	1	1	1	1	1	1
Percent	0.0	0.0	0.0	0.0	0.0	0.0	0.0	0.0	0.0	0.0	0.0	0.0	0.0	0.0	0.0
Code	8,821	8,822	8,823	8,824	8,825	8,826	8,827	8,828	8,829	8,830	8,831	8,832	8,833	8,834	8,835
Frequency	1	1	1	1	1	1	1	1	1	1	1	1	1	1	1
Percent	0.0	0.0	0.0	0.0	0.0	0.0	0.0	0.0	0.0	0.0	0.0	0.0	0.0	0.0	0.0
Code	8,836	8,837	8,838	8,839	8,840	8,841	8,842	8,843	8,844	8,845	8,846	8,847	8,848	8,849	8,850
Frequency	1	1	1	1	1	1	1	1	1	1	1	1	1	1	1
Percent	0.0	0.0	0.0	0.0	0.0	0.0	0.0	0.0	0.0	0.0	0.0	0.0	0.0	0.0	0.0
Code	8,851	8,852	8,853	8,854	8,855	8,856	8,857	8,858	8,859	8,860	8,861	8,862	8,863	8,864	8,865
Frequency	1	1	1	1	1	1	1	1	1	1	1	1	1	1	1
Percent	0.0	0.0	0.0	0.0	0.0	0.0	0.0	0.0	0.0	0.0	0.0	0.0	0.0	0.0	0.0
Code	8,866	8,867	8,868	8,869	8,870	8,871	8,872	8,873	8,874	8,875	8,876	8,877	8,878	8,879	8,880
Frequency	1	1	1	1	1	1	1	1	1	1	1	1	1	1	1
Percent	0.0	0.0	0.0	0.0	0.0	0.0	0.0	0.0	0.0	0.0	0.0	0.0	0.0	0.0	0.0
Code	8,881	8,882	8,883	8,884	8,885	8,886	8,887	8,888	8,889	8,890	8,891	8,892	8,893	8,894	8,895
Frequency	1	1	1	1	1	1	1	1	1	1	1	1	1	1	1
Percent	0.0	0.0	0.0	0.0	0.0	0.0	0.0	0.0	0.0	0.0	0.0	0.0	0.0	0.0	0.0
Code	8,896	8,897	8,898	8,899	8,900	8,901	8,902	8,903	8,904	8,905	8,906	8,907	8,908	8,909	8,910
Frequency	1	1	1	1	1	1	1	1	1	1	1	1	1	1	1
Percent	0.0	0.0	0.0	0.0	0.0	0.0	0.0	0.0	0.0	0.0	0.0	0.0	0.0	0.0	0.0
Code	8,911	8,912	8,913	8,914	8,915	8,916	8,917	8,918	8,919	8,920	8,921	8,922	8,923	8,924	8,925
Frequency	1	1	1	1	1	1	1	1	1	1	1	1	1	1	1
Percent	0.0	0.0	0.0	0.0	0.0	0.0	0.0	0.0	0.0	0.0	0.0	0.0	0.0	0.0	0.0
Code	8,926	8,927	8,928	8,929	8,930	8,931	8,932	8,933	8,934	8,935	8,936	8,937	8,938	8,939	8,940
Frequency	1	1	1	1	1	1	1	1	1	1	1	1	1	1	1
Percent	0.0	0.0	0.0	0.0	0.0	0.0	0.0	0.0	0.0	0.0	0.0	0.0	0.0	0.0	0.0
Code	8,941	8,942	8,943	8,944	8,945	8,946	8,947	8,948	8,949	8,950	8,951	8,952	8,953	8,954	8,955
Frequency	1	1	1	1	1	1	1	1	1	1	1	1	1	1	1
Percent	0.0	0.0	0.0	0.0	0.0	0.0	0.0	0.0	0.0	0.0	0.0	0.0	0.0	0.0	0.0
Code	8,956	8,957	8,958	8,959	8,960	8,961	8,962	8,963	8,964	8,965	8,966	8,967	8,968	8,969	8,970
Frequency	1	1	1	1	1	1	1	1	1	1	1	1	1	1	1
Percent	0.0	0.0	0.0	0.0	0.0	0.0	0.0	0.0	0.0	0.0	0.0	0.0	0.0	0.0	0.0
Code	8,971	8,972	8,973	8,974	8,975	8,976	8,977	8,978	8,979	8,980	8,981	8,982	8,983	8,984	8,985

APPENDIX C

Data supplied by		FORM CJ-35 (8-2-76)		U.S. DEPARTMENT OF COMMERCE BUREAU OF THE CENSUS	
Name		CRIMINAL JUSTICE DIRECTORY SURVEY Public Prosecutors and Civil Attorneys			
Title					
Official address (Number and street)					
City					
State		ZIP code			
Telephone					
Area code	Number	Extension			

(Please correct any error in name and address including ZIP code)

RETURN TO	Bureau of the Census ATTN: Governments Division Washington, D.C. 20233	CENSUS USE ONLY	2																
			E																

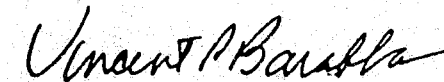
FROM THE DIRECTOR
BUREAU OF THE CENSUS

On behalf of the Law Enforcement Assistance Administration (LEAA) of the U.S. Department of Justice, the Bureau of the Census is conducting a national survey of prosecutors and legal services agencies as part of its ongoing maintenance of the National Directory of Criminal Justice Agencies. The purpose of the survey is to establish a current listing of prosecution and legal services agencies, and to obtain certain additional information on agency organization, jurisdiction, employment, and funding. This information will aid LEAA in improving its program of assistance to those concerned with prosecution and legal services activities.

If there are any items on this questionnaire for which the answer cannot be obtained from available records, reasonable estimates are requested. Please indicate such estimates with an asterisk (*). The duplicate copy of this questionnaire is for your files. The addressed copy should be returned, preferably within 3 weeks, in the enclosed preaddressed envelope. If you have any problems in completing this questionnaire, please call us collect for assistance on Area code (301) 763-2842 or 2896.

This report is authorized by Public Law 93-83. While you are not required to respond, your participation is needed to make the results of this survey comprehensive, accurate, and timely.

Sincerely,



VINCENT P. BARABBA

Enclosures

GENERAL INSTRUCTIONS

Although this questionnaire is addressed to "Agencies," it should also be completed by any part-time or full-time public official or attorney engaged in the prosecution of accused violators of criminal law or in the handling of juvenile matters; or in providing legal advice, assistance, representation, or other services to governmental executives or departments in civil matters.

Section I - AGENCY JURISDICTION

A. Mark (X) those categories below which describe your agency. If none of the categories adequately describes your agency, mark the "Other" box and explain in the space provided.

- 3 An agency which prosecutes the following cases
Mark (X) those matters below which your agency prosecutes
 - a. Felony cases
 - b. Felony preliminaries
 - c. Minor criminal cases other than traffic - Include misdemeanors, infractions, and/or municipal ordinance violations
 - d. Traffic violations
 - e. Juvenile matters
- 4 An agency which represents the government in civil lawsuits
- 5 An agency which provides legal services to a government, short of courtroom representation. For example, research and investigation, giving legal opinions, courtroom assistance, advice at council meetings, preparing contracts, etc.
- 6 An agency which tries or handles juvenile matters exclusively
- 7 A police prosecutor - A police officer or attorney employed by a police department
Mark (X) those matters below which your agency prosecutes
 - a. Felony cases
 - b. Felony preliminaries
 - c. Minor criminal cases other than traffic - Include misdemeanors, infractions, and/or municipal ordinance violations
 - d. Traffic violations
 - e. Juvenile matters
- 8 Other - Specify _____

CENSUS USE ONLY

B. Do police agencies act as prosecutors in your jurisdiction? Yes - Specify types of cases prosecuted by letters (a through e) under code box 7 in item A above Letter(s) _____
 No

Section II - AGENCY FUNDING

What percentage of your agency's total funding for 1 year is provided by the following levels of government? (For example, State 60% and county 40%) Estimates are acceptable, and should be indicated with an asterisk (*).

Source(s) of funding <i>Please complete both columns even if percents are the same.</i>	Percent of employee payroll funded by each government (Include fringe benefits) (a)	Percent of all other costs funded by each government (If no other costs, enter "NA") (b)	CENSUS USE ONLY
1. Federal - Include amounts received directly from the Federal Government and amounts passed through the State, e.g., Revenue Sharing, CETA, and grants from LEAA.	%	%	CENSUS USE ONLY
2. State	%	%	
3. County	%	%	
4. Municipal (city or town)	%	%	
5. Township	%	%	
6. Other - Specify (e.g., two or more counties)	%	%	
TOTAL →	100%	100%	

Section III - AGENCY EMPLOYMENT

Section IV - STATISTICS

Does your agency routinely compile statistics on workload?

1 Yes - Please send us a representative sample of any published statistics, or briefly describe your unpublished statistics. Please do not submit records of individual cases or any information that would specify any individual.

2 No

Section V - GEOGRAPHIC JURISDICTION AND BRANCH OFFICES

A. If your agency serves more than one county, please list county names.

B. Note to headquarters office with branches Please list the name(s), address(es), and telephone number(s) of your branch offices, and the number of employees working in each. (See section IIIA for employee definitions.) A branch office is defined as an office of your agency located in another city or county and having the power to initiate prosecution or provide legal services.

1. Name of office (e.g., "Assistant District Attorney" or "Branch Office")

Address (Number and street)	City	State	ZIP code
County		Telephone (Area code, number, extension)	
Number of employees	Full-time	Part-time	Shared

2. Name of office (e.g., "Assistant District Attorney" or "Branch Office")

Address (Number and street)	City	State	ZIP code
County		Telephone (Area code, number, extension)	
Number of employees	Full-time	Part-time	Shared

3. Name of office (e.g., "Assistant District Attorney" or "Branch Office")

Address (Number and street)	City	State	ZIP code
County		Telephone (Area code, number, extension)	
Number of employees	Full-time	Part-time	Shared

If more than three branch offices, please attach a list

Section VI - COMMENTS

Count each employee in your agency only once — in the primary position that person fills. Include CETA and other Federally funded employees, employees of your agency who work in other departments, and college interns. Part-time public attorneys or police prosecutors should count only those employees on the public payroll and engaged in legal representation (e.g., police prosecutor and part-time secretary).

NOTE: If this agency has branch offices, be sure to include employees located in all branch offices in addition to those located in the headquarters office. A branch office is defined as an office of your agency located in another city or county and having the power to initiate prosecution or provide legal services.

If you cannot include the number of employees in branch offices, please mark

Employment	Full-time employees of your agency (a)	Part-time employees of your agency (b)	Employees shared with another agency ¹ (c)
TOTAL number of employees on September 1, 1976 (Sum of items 1 through 2e) →			
1. ATTORNEYS — Include elected or appointed official, and assistant or deputy attorneys, etc.			
2. NON-ATTORNEYS			
a. Investigators — Include investigative assistants.			
b. Legal services employees who are not attorneys — Include employees engaged in research, preparing legal memos or briefs, etc. (e.g., law clerks or legal interns, paralegal aids, etc.)			
c. Administrative/supervisory employees who are not attorneys — Include business managers, office or case managers, administrative assistants, accountants, etc.			
d. Secretarial/Clerical employees — Include stenographers, record clerks, typists, etc.			
e. Other — Specify			

¹ Column c — All persons employed by your agency who also work for, and receive payment from, another agency (e.g., a district attorney may pay for the services of a secretary, staff attorney, or investigator who is already employed by a municipality or police department).

CENSUS USE ONLY

B. How are attorneys compensated for the work performed for your agency?

Mark (X) for as many boxes as applicable

- 1 Salary
- 2 Fees — Paid strictly for a specific case or service
- 3 Retainer — Payment for services to be performed when requested
- 4 Other — Specify _____

CENSUS USE ONLY

C. May the titled official in your agency engage in private practice?

- 1 Yes — If there are any restrictions, please describe → _____
- 2 No

May the other attorneys in your agency engage in private practice?

- 1 Yes — If there are any restrictions, please describe → _____
- 2 No
- 3 Not applicable

END

CONTINUED

2 OF 2