



**RAPE
IN
ARKANSAS
1989**

Arkansas Crime Information Center

Arkansas Crime Information Center

David Eberdt
Director
Charles Pruitt
Deputy Director
Larry Cockrell
Special Services Manager
Gary Vanderslice
System Support Manager

ACIC Supervisory Board

Judge David Hale, Chairman
Municipal Judges Association
Jack Lassiter, Vice Chairman
Arkansas Bar Association
Will Feland
Prosecuting Attorneys Association
Cary Gaines
Association of Arkansas Counties
Colonel Tommy Goodwin
Arkansas State Police
David Guntharp
Department of Correction
Chief Justice Jack Holt, Jr.
Arkansas Supreme Court
Senator Knox Nelson
General Assembly
Chief Paul Rivaldo
Chiefs of Police Association
Major Ron Stobaugh
Municipal Police Association
Joseph Svoboda
Attorney General's Office
Arch Wylie
Citizen-at-large
Sheriff Jack Yancey
Arkansas Sheriff's Association

Uniform Crime Reporting Staff

Lynn Bulloch
UCR Supervisor
Nancy Krablin
Statistician & Graphics
Glenda Smith
Quality Control
Julie Collier
Composition
Letha Osborne
DP Section, Programmer
Berea Stennis
DP Section, Data Input

Introduction

Rape In Arkansas is an annual publication. Data in this report comes from the state Uniform Crime Reporting program and a special supplement that allows collection of additional information on each rape and attempted rape. It should be understood that only those incidents that are reported to law enforcement are contained in this publication.

127715

U.S. Department of Justice
National Institute of Justice

This document has been reproduced exactly as received from the person or organization originating it. Points of view or opinions stated in this document are those of the authors and do not necessarily represent the official position or policies of the National Institute of Justice.

Permission to reproduce this ~~copyrighted~~ material has been granted by

Public Domain/BJIS
U.S. Department of Justice

to the National Criminal Justice Reference Service (NCJRS).

Further reproduction outside of the NCJRS system requires permission of the copyright owner.

All funding of this publication was made possible through cooperative agreement number 87-BJ-CX-K008 from the Bureau of Justice Statistics. Points of view or opinions expressed in this document do not necessarily represent the official position of the U.S. Department of Justice or the Bureau of Justice Statistics.

A Special Services Report

**RAPE IN ARKANSAS
1989**

May, 1990

Arkansas Crime Information Center

One Capitol Mall
Little Rock, AR 72201
501/682-2222

Acknowledgement

We thank all the law enforcement agencies in the state who participated in the Arkansas Uniform Crime Reporting Program during 1989. Without their support and cooperation, this publication and the resulting overview of crime would not be possible.

Dedication

We are aware that numerous rapes occur that are not reported to law enforcement. This report is dedicated to rape victims who had the courage to report these offenses, and to all law enforcement officers endeavoring to uphold the laws and serve the people of Arkansas.

Definitions of Rape

The definition of rape in Arkansas, according to Arkansas Code 5-14-103 as amended is:

A person commits rape if he engages in sexual intercourse or deviate sexual activity with another person:

- (a) by forcible compulsion; or*
- (b) who is incapable of consent because he is physically helpless; or*
- (c) who is less than fourteen (14) years of age. It is an affirmative defense to prosecution under this Section that the actor was not more than two (2) years older than the victim. Rape is a class Y felony.*

The definition of forcible rape in the Uniform Crime Reporting (UCR) Program is:

Forcible rape is the carnal knowledge of a female forcibly and against her will. Assaults to commit forcible rape are also included; however, statutory rape (without force) is not counted in this category.

There is a wide disparity between these two definitions. **This report utilizes the Uniform Crime Reporting definition of rape.** The report includes all data collected with the cooperation of law enforcement agencies from their offense reports, as reported to the Arkansas Crime Information Center in the UCR Program.

Throughout this report, except where noted, rape and attempted rape are combined for statistical purposes.

Rape In Arkansas 1989

There were 922 rapes and attempted rapes in Arkansas reported through the Uniform Crime Reporting Program. Of these, 755 were rapes and 167 were attempted rapes reported by law enforcement agencies. This is an increase of 18.4% over 1988.

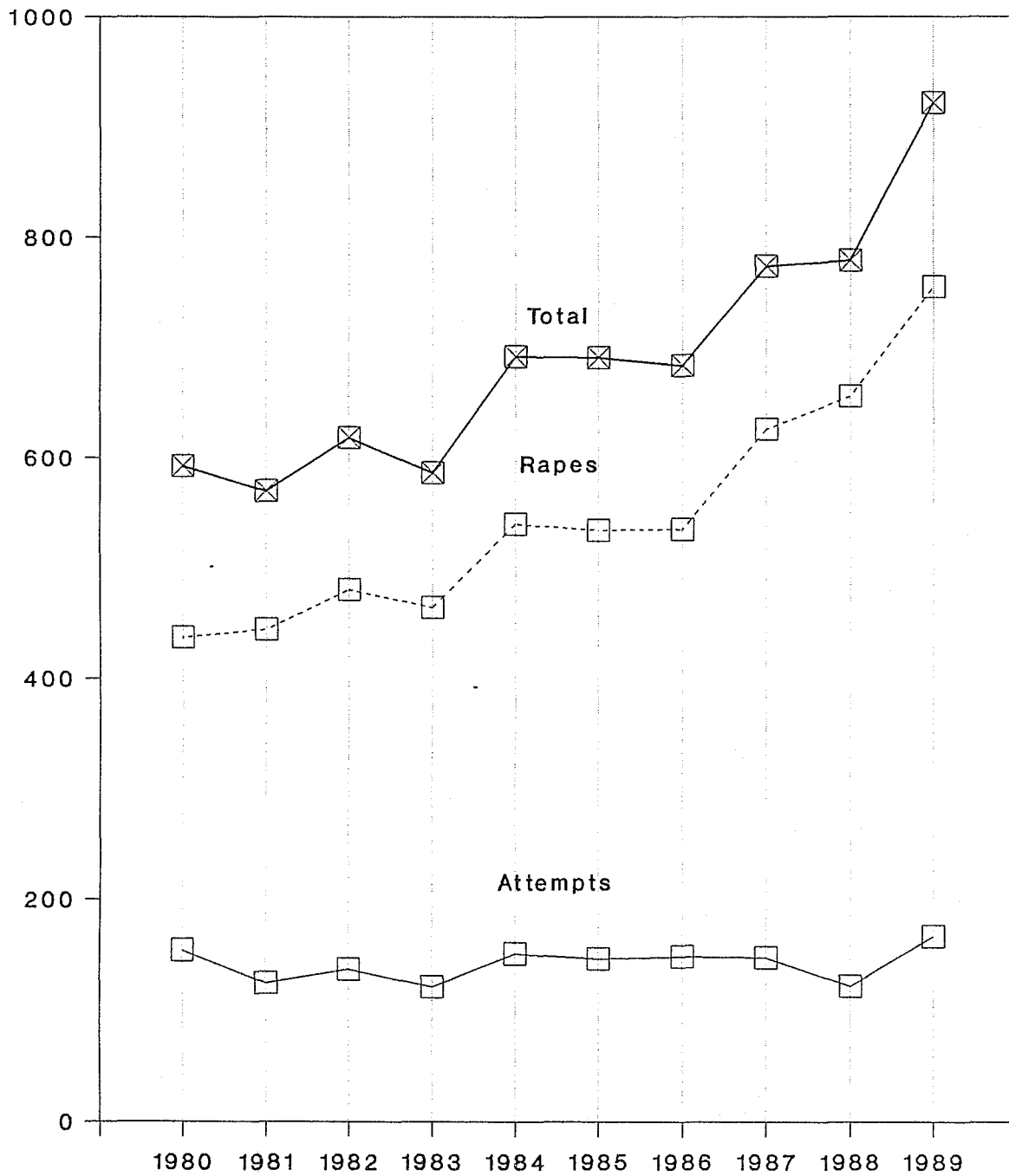
Rape and Attempted Rape

Rape/Attempted Rape	Number	Percent Distribution
Rape	755	81.9
Attempted Rape	167	18.1
Total	922	100

Trend

Year	Number of Offenses	Percent Change (Over Previous Year)	Rate Per 100,000	Percent Cleared
1985	681	- 1.6	29.0	66.0
1986	684	+ 0.4	29.2	70.8
1987	774	+13.2	32.8	69.3
1988	779	+ 0.6	32.4	62.9
1989	922	+18.4	38.5	61.2

Comparison of Rapes and Attempted Rapes 1980 through 1989



Rape by Time of Day

When time of day was known, 43.9% of all rapes occurred during the 8 hour period, between 8:01 p.m. and 4:00 a.m. The most common time for rapes and attempted rapes occurred between 10:01 p.m. and 2:00 a.m.

Time of Day	Number	Percent Distribution
A.M. 12:01 - 2	115	12.5
2:01 - 4	78	8.5
4:01 - 6	45	4.9
6:01 - 8	21	2.3
8:01 - 10	30	3.3
10:01 - Noon	28	3.0
P.M. 12:01 - 2	53	5.7
2:01 - 4	55	6.0
4:01 - 6	51	5.5
6:01 - 8	64	6.9
8:01 - 10	96	10.4
10:01 - Midnight	116	12.6
Unknown	170	18.4

Rape by Day of Week

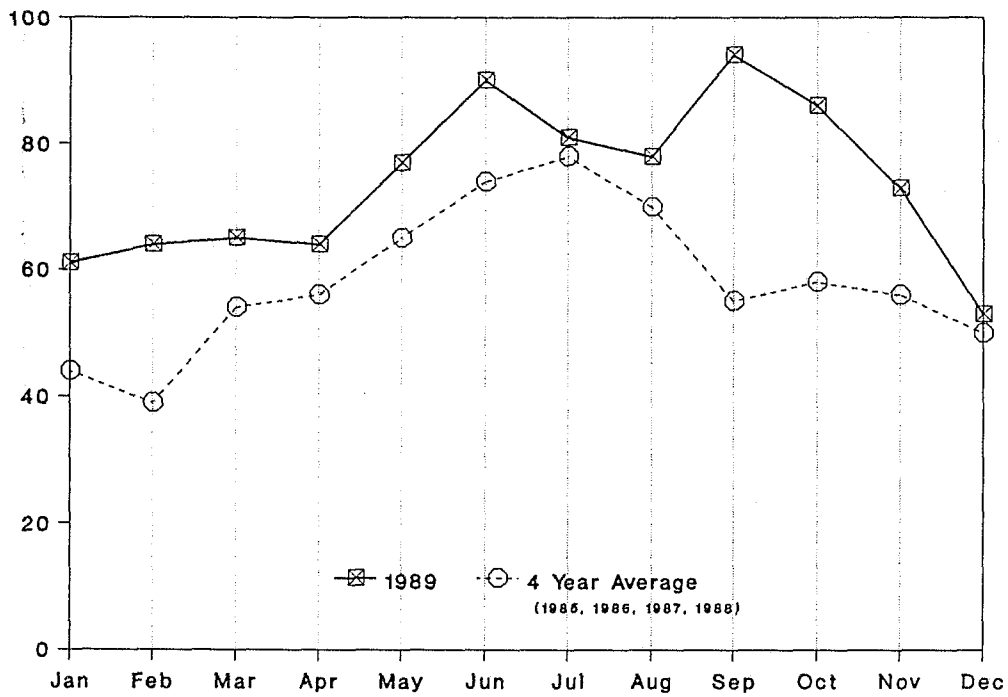
More rapes and attempted rapes were committed on Friday and Saturday.

Day of Rape	Number	Percent Distribution
Sunday	129	14.0
Monday	87	9.4
Tuesday	104	11.3
Wednesday	94	10.2
Thursday	103	11.2
Friday	141	15.3
Saturday	159	17.2
Unknown	105	11.4

Rapes by Month

(1989 compared to an average of the years 1985, 1986, 1987, and 1988)

In 1989, more rapes occurred in September than any other month. From 1985 through 1988, the largest number of rapes occurred during July.



Month	Number	Percent Distribution
January	61	6.6
February	64	6.9
March	65	7.0
April	64	6.9
May	77	8.4
June	90	9.8
July	81	8.8
August	78	8.5
September	94	10.2
October	86	9.3
November	73	7.9
December	53	5.8
Unknown	36	3.9
Total	922	100

Victims of Rape

The victims of rape in Arkansas were predominantly white (53.2%) and less than 25 years of age (67%). The youngest victim was six months old and the oldest, 88. The victim characteristics by race and age are:

Victim Characteristics	Number	Percent Distribution
Race		
White	490	53.2
Black	430	46.6
Other	1	0.1
Unknown	1	0.1
Age		
5 & Under	39	4.2
6- 9	46	5.0
10-17	325	35.3
18-24	212	23.0
25-34	195	21.1
35-59	78	8.5
60 & Over	25	2.7
Unknown	2	0.2
Total	922	100

Weapon Used to Exert Force Upon Victim

Where the type of force used was known only 16% of the offenders used an external weapon.

Weapon Used	Number	Percent Distribution
Firearm	65	7.0
Knife/Sharp instrument	56	6.1
Club/Blunt Instrument	26	2.8
Verbal threats, fists, etc.	743	80.6
Unknown	32	3.5

Victim-Offender Race Relationship

The first race listed is the race of the *victim*, and the second race is that of the *offender(s)*. For example: *white/black* means that the victim was white and the offender was black (1 or more). For offenses in which race is known, 82% of the rapes were between members of the same race.

Victim/Offender(s) Race	Number	Percent Distribution
White/White	353	38.3
Black/Black	403	43.7
Total Intra-racial Rapes (same race)	756	82.0
White/Black	124	13.5
White/Other	3	0.3
Black/White	11	1.2
White/White & Black*	3	0.3
White/White & Other*	1	0.1
Total Interracial Rapes (different races)	142	15.4
White/Unknown	10	1.1
Black/Unknown	12	1.3
Unknown/Unknown	1	0.1
Other/Other	1	0.1
Total Unknown Rapes	24	2.6
Total Rapes	922	100

*Rapes involving victims and offenders of different races are counted as interracial.

Relationship of Offender to Victim

Sixty-five percent of all rapes were committed by persons known to the victim.

Relationship	Number	Percent Distribution
Known to victim	460	50.0
Unknown to victim	313	33.9
Family member	141	15.3
Unknown (data not available)	8	0.8

Rapes Involving Family Members

Where the offender was known to the victim 24% of the rapes involved family members. In four cases of rape involving family members there was more than one offender.

Relationship	Number	Percent Distribution
Husband	16	11.0
Father	36	24.8
Stepfather	30	20.6
Foster Father	4	2.8
Grandfather	4	2.8
Stepgrandfather	3	2.0
Brother	9	6.2
Stepbrother	2	1.4
Uncle	13	9.0
Step Uncle	1	0.7
Cousin	13	9.0
Nephew	1	0.7
Brother-in-law	4	2.8
Unknown	9	6.2
Total	145	100

Location of Actual Rapes and Attempted Rapes

In 1989, 43% of all rapes occurred in the victim's residence.

Location of Rape	Number	Percent Distribution
Victim's residence	397	43.0
Suspect's residence	103	11.2
Other residences	55	6.0
Automobiles	52	5.6
Public outdoor areas (streets, parks, etc.)	153	16.6
Fields, vacant lots, etc.	73	7.9
Motels/Hotels	23	2.5
Place of Employment	3	0.3
All other locations	45	4.9
Unknown	18	2.0

Rape Reporting Time Lapse

Where time lapse was known 52.6% of the rapes were reported to law enforcement agencies within four hours of the commission of the offense.

Hours Reporting Time	Number	Percent Distribution
Less than 1	250	27.1
1 - 4	198	21.5
4+ - 8	68	7.4
8+ - 12	36	3.9
12+ - 24	70	7.6
More than 24	230	24.9
Unknown	70	7.6

Number of Offenders Per Rape

There were two or more offenders in 14% of the rapes or attempted rapes.

Offender(s) Per Offense	Number	Percent Distribution
One	790	85.7
Two	85	9.2
Three	31	3.4
Four	12	1.3
More than four	3	0.3
Unknown	1	0.1

Rape Offenders (Suspects)

Where the age of the offender was known, 39% were between the ages of 20 and 30 years.

Age of Offender	White	Black	Unknown	Total
Under 20	61 (5.4%)	152 (13.6%)	0	213 (19.0%)
20 - 30	169 (15.1%)	271 (24.2%)	0	440 (39.3%)
Over 30	150 (13.4%)	131 (11.7%)	0	281 (25.0%)
Unknown	51 (4.5%)	108 (9.6%)	28 (2.5%)	187 (16.7%)
Total	431 (38.4%)	662 (59.1%)	28 (2.5%)	1,121 (100%)

Medical Attention for Victims

Of the 755 victims of actual rape, 538 (58%) received a medical exam.*

Type of Rape	Medical/Legal Examination			Total
	Received Exam	No Exam	Unknown	
Actual	538 (58.4%)	103 (11.2%)	114 (12.4%)	755 (82.0%)
Attempt	26 (2.8%)	112 (12.1%)	29 (3.1%)	167 (18.0%)
Total	564 (61.2%)	215 (23.3%)	143 (15.5%)	922 (100%)

*This examination is performed on a victim by a physician to examine all areas of the body in order to collect evidence for further examination and possible use in prosecution, and to give treatment as needed. Presently the expense of the medical/legal examination is paid by the state and not by the victim.

Number of Rapes and Attempted Rapes

*(By Reporting Agency)

Agency	Rapes	Attempted	Agency	Rapes	Attempted
ARKANSAS COUNTY	1	3	CRITTENDEN COUNTY	39	4
Stuttgart	1	3	Sheriff	10	0
			West Memphis	29	4
ASHLEY COUNTY	4	2	DALLAS COUNTY	2	1
Sheriff	2	2	Fordyce	2	1
Crossett	1	0			
Hamburg	1	0	DESHA COUNTY	8	0
BENTON COUNTY	18	3	Sheriff	2	0
Sheriff	8	2	Dumas	6	0
Bentonville	1	0			
Rogers	9	1	DREW COUNTY	5	2
BOONE COUNTY	3	0	Sheriff	3	2
Sheriff	1	0	Monticello	2	0
Harrison	2	0			
CALHOUN COUNTY	0	1	FAULKNER COUNTY	6	2
Sheriff	0	1	Sheriff	1	0
			Conway	5	1
CARROLL COUNTY	8	1	Greenbrier	0	1
Sheriff	8	1			
CHICOT COUNTY	2	1	FRANKLIN COUNTY	3	1
Sheriff	1	1	Sheriff	2	1
Lake Village	1	0	Ozark	1	0
CLARK COUNTY	3	3			
Sheriff	3	0	GARLAND COUNTY	30	4
Arkadelphia	0	3	Sheriff	6	0
			Hot Springs	24	4
CLEBURNE COUNTY	6	0			
Sheriff	3	0	GREENE COUNTY	3	2
Heber Springs	3	0	Sheriff	1	2
			Paragould	2	0
COLUMBIA COUNTY	9	1			
Sheriff	9	1	HEMPSTEAD COUNTY	4	4
			Sheriff	2	3
CONWAY COUNTY	5	0	Hope	2	1
Sheriff	4	0			
Morrilton	1	0	HOT SPRING COUNTY	2	0
			Malvern	2	0
CRAIGHEAD COUNTY	21	2			
Jonesboro	21	2	HOWARD COUNTY	1	1
			Sheriff	1	0
CRAWFORD COUNTY	8	0	Nashville	0	1
Sheriff	4	0			
Alma	2	0	INDEPENDENCE COUNTY	9	0
Van Buren	2	0	Sheriff	9	0
			JACKSON COUNTY	4	0
			Sheriff	4	0

*Agencies reporting no rapes are not listed.

Number of Rapes and Attempted Rapes

Agency	Rapes	Attempted	Agency	Rapes	Attempted
JEFFERSON COUNTY	67	10	PHILLIPS COUNTY	3	0
Sheriff	20	3	Sheriff	3	0
Pine Bluff	47	7			
LAFAYETTE COUNTY	4	0	POINSETT COUNTY	4	1
Sheriff	4	0	Sheriff	1	0
			Marked Tree	3	0
			Trumann	0	1
LEE COUNTY	4	1	POLK COUNTY	1	1
Sheriff	1	0	Sheriff	1	1
Marianna	3	1			
LITTLE RIVER COUNTY	0	2	POPE COUNTY	8	1
Sheriff	0	1	Sheriff	5	0
Ashdown	0	1	Russellville	3	1
LONOKE COUNTY	6	0	PULASKI COUNTY	285	79
Sheriff	4	0	Sheriff	31	11
Carlisle	1	0	Jacksonville	12	0
Lonoke	1	0	Little Rock	182	55
			North Little Rock	59	13
MILLER COUNTY	19	5	Sherwood	1	0
Sheriff	4	2			
Texarkana	15	3	ST. FRANCIS COUNTY	14	1
MISSISSIPPI COUNTY	23	5	Sheriff	3	0
Sheriff	10	2	Forrest City	11	1
Blytheville	7	2			
Osceola	6	1	SALINE COUNTY	10	1
MONROE COUNTY	3	0	Sheriff	3	0
Sheriff	3	0	Benton	7	1
MONTGOMERY COUNTY	1	0	SEARCY COUNTY	4	0
Sheriff	1	0	Sheriff	4	0
NEVADA COUNTY	2	0	SEBASTIAN COUNTY	32	11
Sheriff	2	0	Sheriff	1	0
			Fort Smith	31	11
NEWTON COUNTY	1	0	SHARP COUNTY	3	0
Sheriff	1	0	Sheriff	3	0
OUACHITA COUNTY	8	0	UNION COUNTY	9	4
Camden	8	0	El Dorado	9	4
PERRY COUNTY	2	2	VAN BUREN COUNTY	1	0
Sheriff	2	2	Sheriff	1	0

Number of Rapes and Attempted Rapes

Agency	Rapes	Attempted
WASHINGTON COUNTY	33	4
Sheriff	1	1
Fayetteville	24	2
Johnson	1	0
Prairie Grove	1	0
Springdale	4	0
U of A	2	0
West Fork	0	1
WHITE COUNTY	3	0
Sheriff	1	0
Kensett	1	0
Searcy	1	0
YELL COUNTY	1	1
Dardanelle	1	1
STATE TOTAL	755	167

ACIC Agent Staff Areas

