

**RAPE
IN
ARKANSAS
1995**

165398

Arkansas Crime Information Center

Arkansas Crime Information Center

David Eberdt

Director

Charles Pruitt

Deputy Director

Larry Cockrell

Criminal History Manager

Gary Vanderslice

System Support Manager

Richard Thomas

Special Services Manager

ACIC Supervisory Board

Jack Lassiter, Chairman

Arkansas Bar Association

Jack Gillean, Vice Chairman

Office of the Governor

Colonel John Bailey

Arkansas State Police

Paul Bosson

Prosecuting Attorney's Association

J.D. Gingerich

Arkansas Supreme Court

David Guntharp

Department of Correction

Rick Hogan

Attorney General's Office

Representative James Jordan

General Assembly

Captain Mike Mashburn

Municipal Police Association

Sheriff Lonnie Nichols

Arkansas Sheriff's Association

Chief Paul Rivaldo

Chiefs of Police Association

J.R. Thomas

Citizen-at-large

Vicki Threadgill

Association of Arkansas Counties

Uniform Crime Reporting Staff

Lynn Bulloch

UCR Supervisor

Leo Tracy

Quality Control, Data Input

Julie Collier

Distribution

Berea Stennis

System Support Section, Data Input

Introduction

Rape In Arkansas is an annual publication. Data in this report comes from the state Uniform Crime Reporting program and a special supplement that allows collection of additional information on each rape and attempted rape. It should be understood that only those incidents that are reported to law enforcement are contained in this publication.

165398

A Special Services Report

RAPE IN ARKANSAS 1995

June, 1996

Arkansas Crime Information Center

One Capitol Mall
Little Rock, AR 72201
501/682-2222
FAX 501/682-7444

Acknowledgement

We thank all the law enforcement agencies in the state who participated in the Arkansas Uniform Crime Reporting Program during 1995. Without their support and cooperation, this publication and the resulting overview of crime would not be possible.

Dedication

We are aware that numerous rapes occur that are not reported to law enforcement. This report is dedicated to rape victims who had the courage to report these offenses, and to all law enforcement officers endeavoring to uphold the laws and serve the people of Arkansas.

Definitions of Rape

The definition of rape in Arkansas, according to Arkansas Code 5-14-103 and as amended by Act 935 is:

A person commits rape if he engages in sexual intercourse or deviate sexual activity with another person:

- A. (1). *by forcible compulsion; or*
 - (2). *who is incapable of consent because he is physically helpless; or*
 - (3). *who is less than fourteen (14) years of age. It is an affirmative defense to prosecution under this Section that the actor was not more than two (2) years older than the victim; or*
 - (4). *who is not his spouse, less than sixteen (16) years of age and incapable of consent because of mental defect or mental incapacity.*
- B. *Rape is a class Y felony.*

The definition of forcible rape in the Uniform Crime Reporting (UCR) Program is:

Forcible rape is the carnal knowledge of a female forcibly and against her will. Assaults to commit forcible rape are also included; however, statutory rape (without force) is not counted in this category.

There is a wide disparity between these two definitions. **This report utilizes the Uniform Crime Reporting definition of rape.** The report includes all data collected, with the cooperation of law enforcement agencies from their offense reports, as reported to the Arkansas Crime Information Center in the UCR Program.

Throughout this report, except where noted, rape and attempted rape are combined for statistical purposes.

Rape in Arkansas 1995

There were 923 rapes and attempted rapes in Arkansas reported through the Uniform Crime Reporting Program. Of these, 831 were rapes and 92 were attempted rapes reported by law enforcement agencies. This represents a decrease from 1994 of 10%, and 8% less than five years ago, but 35% higher than 10 years ago.

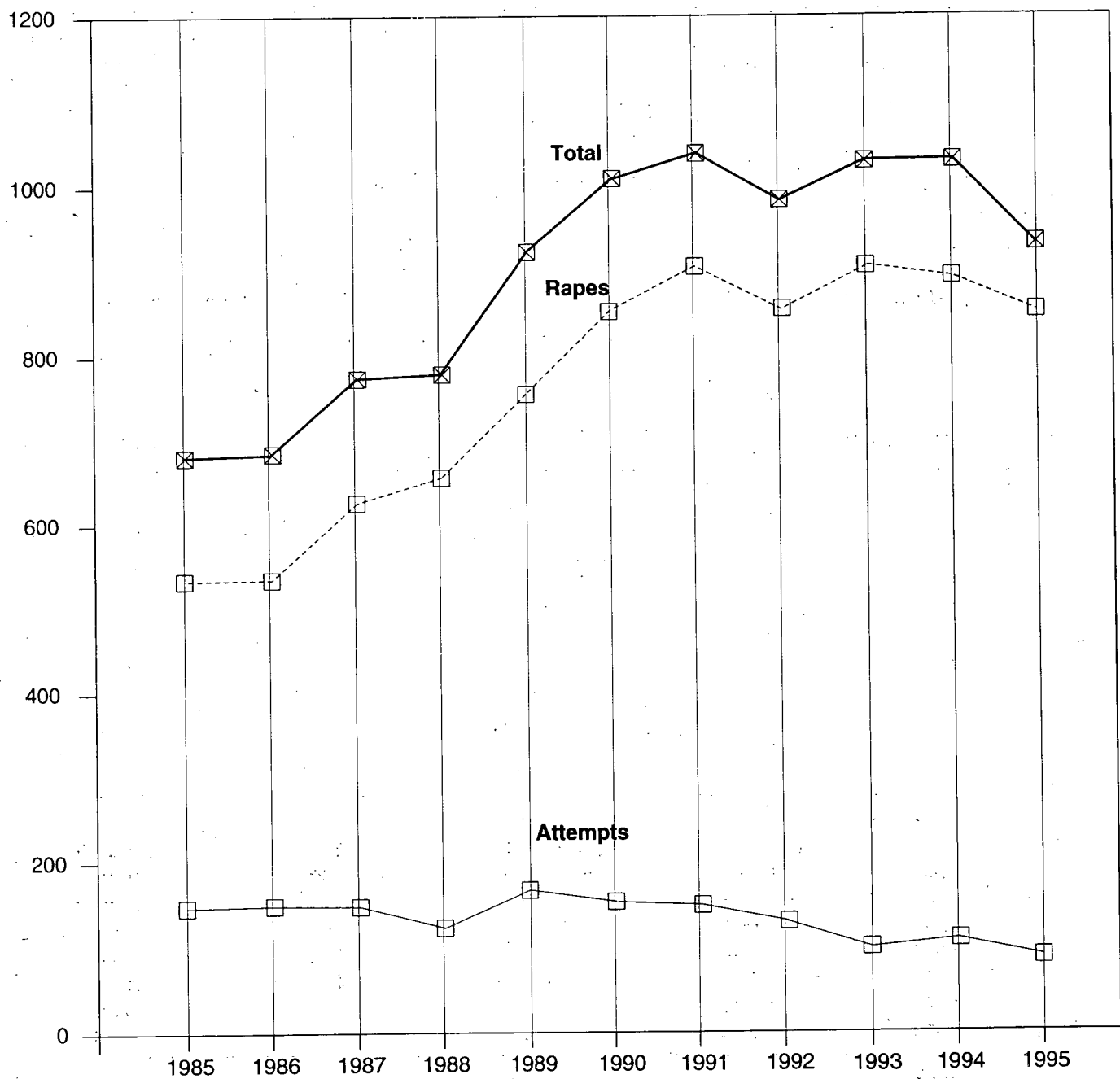
Rape and Attempted Rape

Rape/Attempted Rape	Number	Percent Distribution
Rape	831	90.0
Attempted Rape	92	10.0
Total	923	100

Trend

Year	Number of Offenses	Percent Change (Over Previous Year)	Rate Per 100,000	Percent Cleared
1990	1,009	+ 9.4	43.1	57.2
1991	1,052	+ 4.3	44.8	56.5
1992	988	- 6.0	41.9	58.9
1993	1,026	+ 3.8	42.8	61.0
1994	1,026	0.0	42.3	51.8
1995	923	-10.0	37.6	61.1

Comparison of Rapes and Attempted Rapes 1985 through 1995



Rape by Time of Day

When time of day was known, almost half of all rapes (45%) occurred during the 6 hour period between 10:00 p.m. and 4:00 a.m. The most common two hour period was from midnight to 2:00 a.m.

Only 17% of the rapes occurred during the 8 hour period between 6:00 a.m. and 2:00 p.m., when time of day was known. The least likely period was from 6:00 a.m. until 8:00 a.m. (3%).

Time of Day	Number	Percent Distribution
A.M. 12:01 - 2	131	14.2
2:01 - 4	91	9.9
4:01 - 6	55	6.0
6:01 - 8	24	2.6
8:01 - 10	29	3.1
10:01 - Noon	36	3.9
P.M. 12:01 - 2	36	3.9
2:01 - 4	48	5.2
4:01 - 6	37	4.0
6:01 - 8	66	7.1
8:01 - 10	86	9.3
10:01 -Midnight	114	12.4
Unknown	170	18.4

Rape by Day of Week

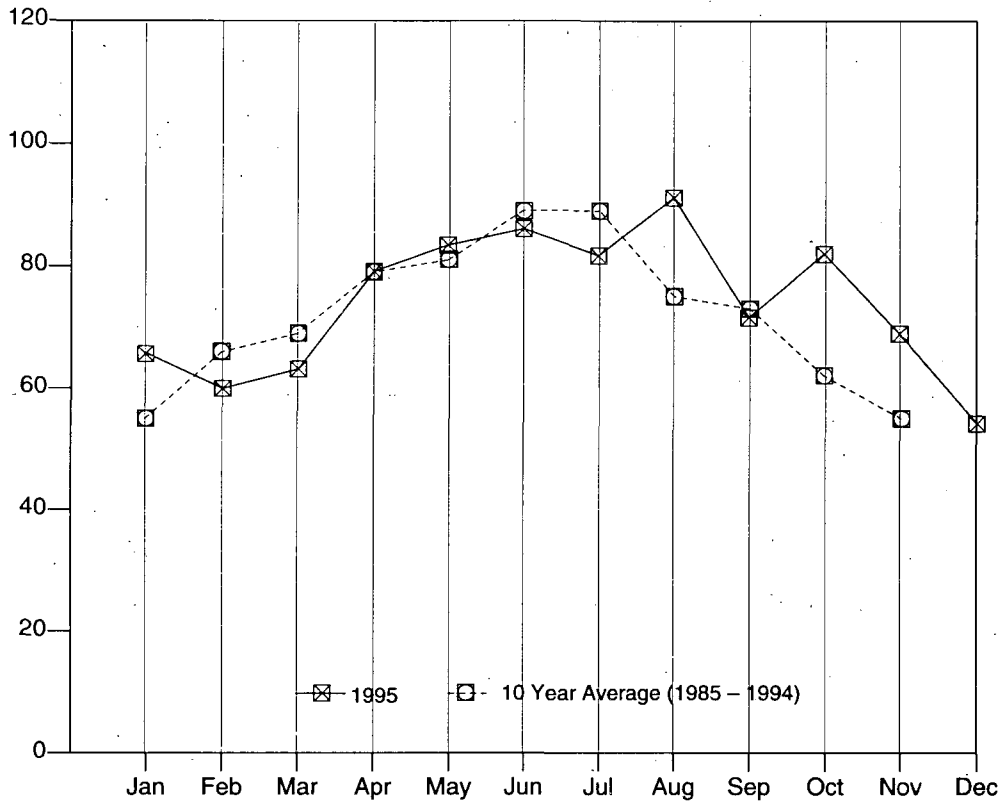
Where day of the week was known, 51% of the rapes were committed on weekend days (Friday, Saturday or Sunday) and 21% were committed on Saturday alone.

Day of Rape	Number	Percent Distribution
Sunday	138	15.0
Monday	122	13.2
Tuesday	91	9.9
Wednesday	93	10.1
Thursday	101	10.9
Friday	117	12.7
Saturday	174	18.9
Unknown	87	9.4

Rapes by Month

(1995 compared to a ten year average – 1985 through 1994)

In 1995, more rapes occurred in August than any other month. From 1985 through 1994, the ten year average was highest for July and August.



Note: due to rounding some totals won't be exactly 100%.

Month	Number	Percent Distribution
January	66	7.2
February	60	6.5
March	63	6.8
April	79	8.6
May	83	9.0
June	85	9.2
July	82	8.9
August	92	10.0
September	72	7.8
October	81	8.8
November	68	7.4
December	54	5.9
Unknown	38	4.1
Total	923	100

Victims of Rape

Approximately three of every five victims were white. White victims have increased 6% over a five year period, black victims have decreased 23%.

The age distribution for victims has remained relatively constant over the past five years. Forty-eight percent were younger than eighteen years old and two of every three victims were younger than 25. Two victims were only one year old and the oldest victim was 94.

More rapes occurred in victims of age fourteen through seventeen than in any other age range (25%). Almost 10% of the victims were 12 or 13 years of age.

Victim Characteristics

Age of Offender	White	Black	Total
5 & Under	21	17	38
6 - 9	26	17	43
10 - 13	89	36	125
14 - 17	140	94	234
18 - 20	63	38	101
21 - 24	46	29	75
25 - 29	66	46	112
30 - 34	43	39	82
35 - 39	22	21	43
40 - 49	27	16	43
50 - 59	5	5	10
60 & Over	14	3	17
Total	562	361	923

Weapons Used to Exert Force Upon Victim

An external weapon (other than hands, fists, verbal threats) was used in 15% of the rapes compared to 12% in 1994.

Weapon Used	Number	Percent Distribution
Firearm	59	6.4
Knife/Sharp Instrument	60	6.5
Club/Blunt Instrument	19	2.1
Verbal threats, fists, etc.	781	84.6
Unknown	4	0.4

Victim-Offender Race Relationship

The first race listed is the race of the *victim*, and the second race is that of the *offender(s)*. For example: *white/black* means that the victim was white and the offender was black (1 or more). For offenses in which race is known, 81% of the rapes were between members of the same race.

Victim/Offender(s) Race	Number	Percent Distribution
White/White	406	44.0
Black/Black	339	36.7
Total Intraracial Rapes (same race)	745	80.7
White/Black	137	14.8
Black/White	14	1.5
White/Other	4	0.4
White/White & Black*	4	0.4
Black/White & Black*	3	0.3
Black/Other	1	0.1
Total Interracial Rapes (different races)	163	17.7
White/Unknown	11	1.2
Black/Unknown	4	0.4
Total Unknown Rapes	15	1.6
Total Rapes	923	100

**Rapes involving offenders of more than one race are counted as interracial.*

Relationship of Offender to Victim

Almost three-fourths of all rapes were committed by persons known to the victim.

Relationship	Number	Percent Distribution
Known to victim	527	57.1
Unknown to victim	227	24.6
Family member	155	16.8
Unknown	14	1.5

Rapes Involving Family Members

Where the offender was known to the victim 23% of the rapes involved family members. Where the offender was a family member, 37 victims (24%) were age 10 or younger, and 94 victims (61%) were 14 years of age or younger.

Relationship	Number	Percent Distribution
Husband	11	6.9
Ex-Husband	9	5.6
Father	37	23.1
Stepfather	35	21.8
Grandfather	5	3.1
Stepgrandfather	1	0.6
Brother	8	5.0
Half Brother	1	0.6
Stepbrother	6	3.8
Uncle	24	15.0
Nephew	2	1.3
Cousin	15	9.4
Father-in-law	2	1.3
Brother-in-law	1	0.6
Son-in-law	1	0.6
Unknown	2	1.3
Total	160	100

Location of Actual Rapes and Attempted Rapes

In 1995, 44% of all rapes occurred in the victim's residence and more than two-thirds of all rapes occurred in either the victim's, suspect's or another residence.

Location of Rape	Number	Percent Distribution
Victim's residence	404	43.8
Suspect's residence	138	15.0
Other residences	109	11.8
Automobiles	55	6.0
Public outdoor areas (streets, parks, etc.)	89	9.6
Fields, vacant lots, wooded areas, etc.	56	6.1
Motels/Hotels	31	3.4
Bar/Lounge	1	0.1
Place of Employment	5	0.5
School/playground	10	1.1
All other locations	12	1.3
Unknown	13	1.4

Rape Reporting Time Lapse

Where time lapse was known 43% of the rapes were reported to law enforcement agencies within four hours of the commission of the offense. This has remained approximately the same since 1991. Before 1991, 50% to 60% of the reports were made to law enforcement within four hours.

In 13% of the offenses, the time lapse was unknown or could not be used because more than one rape occurred over a time period of a month or more.

Hours Reporting Time	Number	Percent Distribution
Less than 1	183	19.8
1 - 4	162	17.6
4 + - 8	76	8.2
8 + - 12	65	7.0
12 + - 24	111	12.0
More than 24	208	22.5
Unknown	118	12.8

Number of Offenders Per Rape

There were two or more offenders in only 10% of the rapes or attempted rapes.

Offender(s) Per Offense	Number	Percent Distribution
One	833	90.2
Two	57	6.2
Three	20	2.1
Four	7	0.8
More than four	6	0.7

Rape Offenders (Suspects)

The number of white offenders decreased 10% compared to 1994 and 15% compared to 1993; while the number of black offenders decreased 8% from 1994 and 11% from 1993. Suspects age 16 to 21 are the largest age group of offenders, and include 30% of known offenders.

Age of Offender	White	Black	Unknown	Total
10 – 15	23	28	0	51
16 – 20	94	171	2	267
21 – 25	63	81	0	144
26 – 30	66	74	0	140
31 – 35	47	60	0	107
36 – 40	42	38	0	80
41 – 45	21	19	0	40
46 – 50	20	9	0	29
51 – 60	16	2	0	18
61 and over	8	2	0	10
Unknown	56	118	13	187
Total	456 (42.5%)	602 (56.1%)	15 (1.4%)	1,073 (100%)

Medical Attention for Victims

Of the 831 victims of actual rape, 548 (59%) received medical attention. Where medical information is known on actual rape victims, 78% received medical attention.

Type of Rape	Medical Attention			Total
	Received Medical Attention	No Medical Attention	Unknown	
Actual Attempt	548 (59.4%) 19 (2.1%)	157 (17%) 52 (5.6%)	126 (13.7%) 21 (2.3%)	831 (90.0%) 92 (10%)
Total	567 (61.4%)	209 (22.6%)	147 (15.9%)	923 (100%)

1995
Number of Rapes and Attempted Rapes
 *(By Reporting Agency)

AGENCY	RAPES	ATTEMPTED	AGENCY	RAPES	ATTEMPTED
ARKANSAS COUNTY	10	2	CRAWFORD COUNTY	2	2
Stuttgart	10	2	Sheriff	1	2
			Van Buren	1	0
ASHLEY COUNTY	4	1	CRITTENDEN COUNTY	26	1
Sheriff	3	0	Sheriff	3	0
Crossett	1	1	West Memphis	23	1
BAXTER COUNTY	2	0	CROSS COUNTY	5	0
Mountain Home	2	0	Sheriff	3	0
			Wynne	2	0
BENTON COUNTY	22	1	DALLAS COUNTY	1	1
Sheriff	9	0	Sheriff	1	1
Rogers	13	1			
BOONE COUNTY	7	0	DESHA COUNTY	7	1
Sheriff	4	0	Sheriff	1	0
Harrison	3	0	Dumas	6	1
BRADLEY COUNTY	2	0	DREW COUNTY	3	0
Sheriff	1	0	Sheriff	2	0
Warren	1	0	Monticello	1	0
CALHOUN COUNTY	2	0	FAULKNER COUNTY	16	0
Hampton (10 months)	2	0	Sheriff	1	0
			Conway	14	0
CARROLL COUNTY	4	0	UCA PD	1	0
Sheriff	4	0			
CHICOT COUNTY	1	1	FULTON COUNTY	2	0
Dermott	1	0	Sheriff	2	0
Lake Village	0	1			
CLARK COUNTY	1	0	GARLAND COUNTY	35	8
Sheriff	1	0	Sheriff	5	1
			Hot Springs	30	7
CLEVELAND COUNTY	5	0	GRANT COUNTY	4	0
Sheriff	5	0	Sheriff	4	0
COLUMBIA COUNTY	6	0	GREENE COUNTY	6	0
Sheriff	4	0	Sheriff	1	0
Magnolia	2	0	Paragould	5	0
CONWAY COUNTY	8	1	HEMPSTEAD COUNTY	7	0
Sheriff	3	0	Sheriff	1	0
Morrilton	5	1	Hope	6	0
CRAIGHEAD COUNTY	26	1	HOT SPRING COUNTY	5	1
ASU DPS	1	0	Sheriff	2	0
Jonesboro	25	1	Malvern	3	1

*Counties, sheriffs offices or police departments not listed in the tables have reported no rape or attempt for the year of 1995.

1995
Number of Rapes and Attempted Rapes

AGENCY	RAPES	ATTEMPTED	AGENCY	RAPES	ATTEMPTED
INDEPENDENCE COUNTY	8	0	PHILLIPS COUNTY	14	0
Sheriff	8	0	Sheriff	6	0
IZARD COUNTY	2	0	Helena	4	0
Sheriff	2	0	West Helena	4	0
JACKSON COUNTY	8	1	POINSETT COUNTY	3	0
Sheriff	1	0	Sheriff	1	0
Newport	7	1	Trumann	2	0
JEFFERSON COUNTY	55	9	POLK COUNTY	1	0
Sheriff	4	0	Sheriff	1	0
Pine Bluff	51	9	POPE COUNTY	16	5
JOHNSON COUNTY	2	0	Sheriff	3	3
Sheriff	1	0	Russellville	13	2
Clarksville	1	0	PRAIRIE COUNTY	0	1
LAFAYETTE COUNTY	7	0	Des Arc	0	1
Sheriff	7	0	PULASKI COUNTY	245	31
LONOKE COUNTY	3	0	Sheriff	39	0
Sheriff	1	0	Jacksonville	13	1
Lonoke	2	0	Little Rock	148	24
MADISON COUNTY	2	0	Maumelle	1	0
Sheriff	2	0	North Little Rock	41	6
MARION COUNTY	3	0	Sherwood	2	0
Sheriff	3	0	UALR DPS	1	0
MILLER COUNTY	19	5	ST. FRANCIS COUNTY	11	1
Sheriff	1	0	Sheriff	6	0
Texarkana	18	5	Forrest City	5	1
MISSISSIPPI COUNTY	47	4	SALINE COUNTY	21	0
Sheriff	19	2	Sheriff	9	0
Blytheville	20	2	Benton	12	0
Osceola	8	0	SEARCY COUNTY	1	0
NEWTON COUNTY	1	0	Sheriff	1	0
Sheriff	1	0	SEBASTIAN COUNTY	53	4
OUACHITA COUNTY	18	0	Sheriff	3	0
Sheriff	9	0	Fort Smith	50	4
Camden	9	0	SEVIER COUNTY	2	1
PERRY COUNTY	1	0	Sheriff	1	1
Sheriff	1	0	DeQueen	1	0
			SHARP COUNTY	1	0
			Sheriff	1	0

1995
Number of Rapes and Attempted Rapes

AGENCY	RAPES	ATTEMPTED	AGENCY	RAPES	ATTEMPTED
STONE COUNTY	1	0	WHITE COUNTY	15	1
Sheriff	1	0	Sheriff	11	0
UNION COUNTY	5	1	Beebe	1	0
Sheriff	1	0	Judsonia	1	0
El Dorado	4	1	Searcy	2	1
VAN BUREN COUNTY	1	0	YELL COUNTY	3	0
Sheriff	1	0	Dardanelle	3	0
WASHINGTON COUNTY	43	7	STATE TOTAL	831	92
Sheriff	3	0			
Farmington	0	1			
Fayetteville	18	6			
Springdale	20	0			
U of A Fayetteville DPS	1	0			
West Fork	1	0			

ACIC Agent Staff Areas

